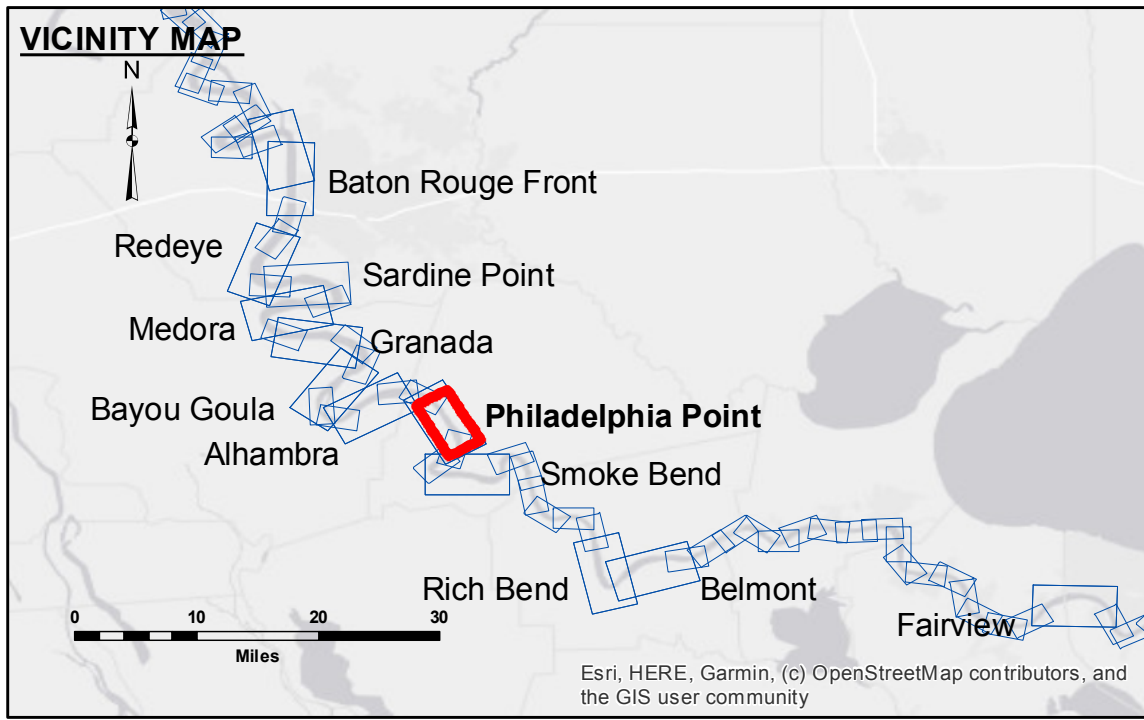


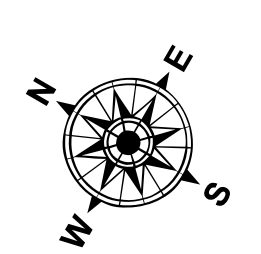
NOTES:
 Access: Contractors, The United States Government furnishes these data and the recipient accepts and uses them with the express understanding that it is not to be used for any purpose other than that for which it was intended. The user is responsible for the results, reliability, usability or suitability for any particular purpose of the data. The user shall be responsible for the accuracy, completeness, timeliness, and any other factors that may affect the data's use. The user shall be responsible for the accuracy, completeness, timeliness, and any other factors that may affect the data's use. The user shall be responsible for the accuracy, completeness, timeliness, and any other factors that may affect the data's use. The user shall be responsible for the accuracy, completeness, timeliness, and any other factors that may affect the data's use.

Submitted:	SPPS
Recommended:	JH
Approved:	JH

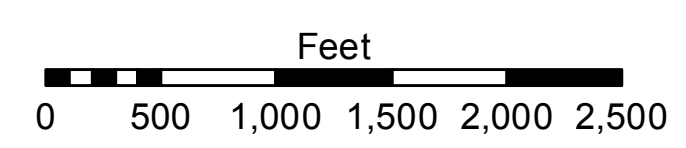
MISSISSIPPI RIVER - B.R. TO GULF
PHILADELPHIA POINT CROSSING
 MD_19_PHP_20210905_CS_5X5_POSTIDA
 05 September 2021



LEGEND			
--- Federal Navigation Channel	○ Cable Area	□ Borrow Area	■ 0' and above
— Federal Navigation Center Line	■ Placement Area	● Shoalest Sounding**	■ 0' to -5'
— As-built Pipeline/Cable	□ Anchorage Area	☆ Beacon, General	■ -5' to -10'
..... Unconfirmed Pipeline/Cable	⊗ Obstruction Point	◆ Red Navigation Buoy	■ -10' to -20'
— Project Depth Contour	⚓ Wrecks-Submerged	◆ Green Navigation Buoy	■ -20' to -30'
			■ -30' to -35'
			■ -35' to -40'
			■ -40' to -45'
			■ -45' and below



LWRP: N/A
 Gage Reading: BR:11.2 DON:6.0 USED:6.9 NAVD
 Sea Conditions: CALM
 Vessel Name: OB-169
 Survey Type: CONDITION
 Sounding Frequency***: 400KHZ



NOTES:
 Horizontal Coordinate System: North American Datum of 1983 (NAD83), projected to the State Plane Coordinate System (SPCS), Louisiana South Zone. Distance units in U.S. Survey Feet.
 Vertical Datum: Soundings are shown in feet and indicate depths below Low Water Reference Plane 2007 (NAVD).
 Distances on the Mississippi River, above and below Head of Passes are shown at 1 mile intervals.
 The location of navigation aids are based on and provided by the U.S. Coast Guard and USACE crew.
 2015 Aerial Photography data source: NAIP, USDA-FSA-APFO Aerial Photography Field Office.
 Reference is N.O.A.A. Navigation Chart No. 11370.
 ** Shoalest Sounding per Quarter per Reach.
 *** High frequency (200 kHz) survey data represents the first signal return at a sounding location and will include suspended solids, known as "fluff", if present. Low frequency (20 kHz) survey data normally penetrates through this "fluff" layer to depict elevations of consolidated bottom material. Low frequency accuracies may vary depending on channel conditions and bathymetry settings.

Sheet Reference Number
 19 of 97
 Revision Number:
 4.2-20210420