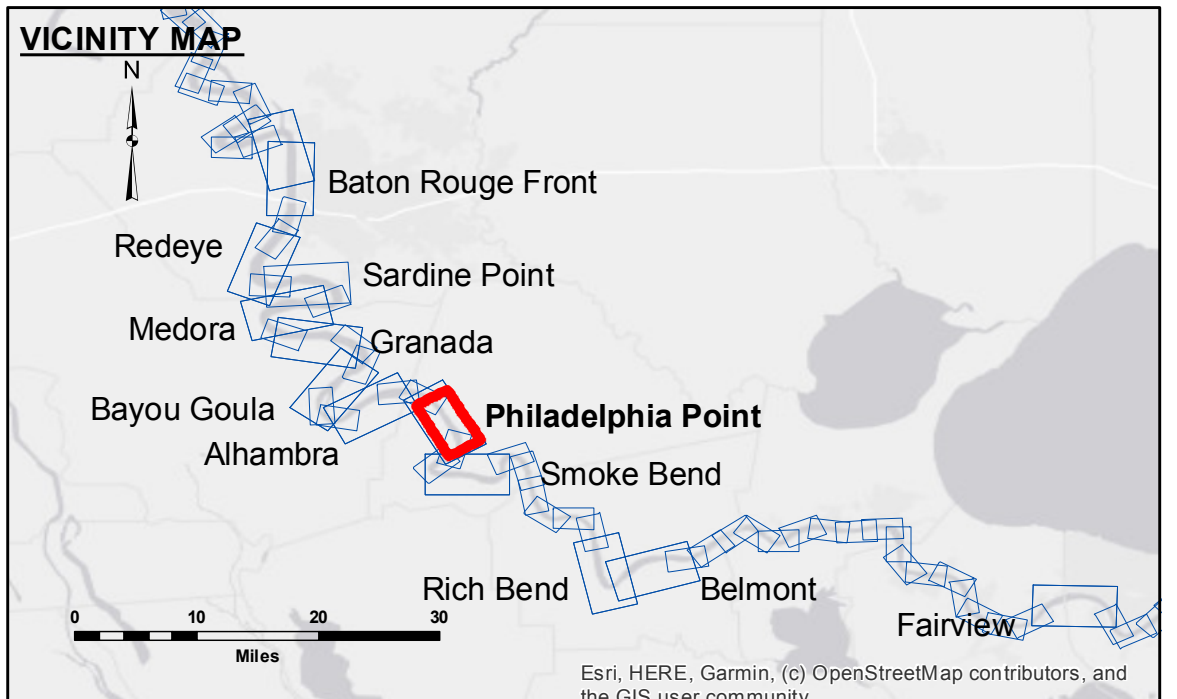


Access to Data: The data represents the results of data collection/processing for a specific US Army Corps of Engineers project. The data is only valid for its intended use, content, time and accuracy specifications. The user is responsible for the results. The user must ensure the application of the data for other than its intended purpose. Data Constraints: Hydrographic survey data is subject to change rapidly due to several factors including but not limited to dredging, sedimentation, and changes in bathymetry. The user must ensure that the data is current and that the hydrographical conditions which develop after the date of the survey are taken into account. The information depicted on this map represents the results of a survey conducted on the ground. The user is responsible for the accuracy of the information. The user must ensure that the information is current and that the hydrographical conditions which develop after the date of the survey are taken into account.

U.S. ARMY CORPS OF ENGINEERS NEW ORLEANS DISTRICT		
Submitted:	Surveyed By: RYLAND/ADAMS	Plotted By: BD
Recommended:	Chief, Survey Section	Checked By: AC
Approved:	Chief, Waterways Maintenance Section	

**MISSISSIPPI RIVER - B.R. TO GULF
PHILADELPHIA POINT CROSSING
MD_19_PHP_20220331_CS
31 March 2022**



LEGEND	
--- Federal Navigation Channel	0' and above
— Federal Navigation Center Line	0' to -5'
— As-built Pipeline/Cable	-5' to -10'
..... Unconfirmed Pipeline/Cable	-10' to -20'
— Project Depth Contour	-20' to -30'
— Borrow Area	-30' to -35'
○ Cable Area	-35' to -40'
□ Placement Area	-40' to -45'
□ Anchorage Area	-45' and below
⊗ Obstruction Point	
★ Beacon, General	
◆ Red Navigation Buoy	
◆ Green Navigation Buoy	
● Shoalest Sounding**	
◆ Wrecks-Submerged	

LWRP: 1.5
Gage Reading: BR:34.0 D:22.6 USED:24.30 NAVD
Sea Conditions: CALM
Vessel Name: M/V VALENTOUR
Survey Type: CONDITION
Sounding Frequency*:** HIGH

NOTES:

Horizontal Coordinate System:
North American Datum of 1983 (NAD83), projected to the State Plane Coordinate System (SPCS), Louisiana South Zone. Distance units in U.S. Survey Feet.

Vertical Datum:
Soundings are shown in feet and indicate depths below Low Water Reference Plane 2007 (NAVD).

Distances on the Mississippi River, above and below Head of Passes are shown at 1 mile intervals.

The location of navigation aids are based on and provided by the U.S. Coast Guard and USACE crew.

2015 Aerial Photography data source: NAIP, USDA-FSA-APFO Aerial Photography Field Office.

Reference is N.O.A.A. Navigation Chart No. 11370.

** Shoalest Sounding per Quarter per Reach.

*** High frequency (200 kHz) survey data represents the first signal return at a sounding location and will include suspended solids, known as "fluff", if present. Low frequency (20 kHz) survey data normally penetrates through this "fluff" layer to depict elevations of consolidated bottom material. Low frequency accuracies may vary depending on channel conditions and bathymeter settings.

**Sheet Reference Number
19 of 97**