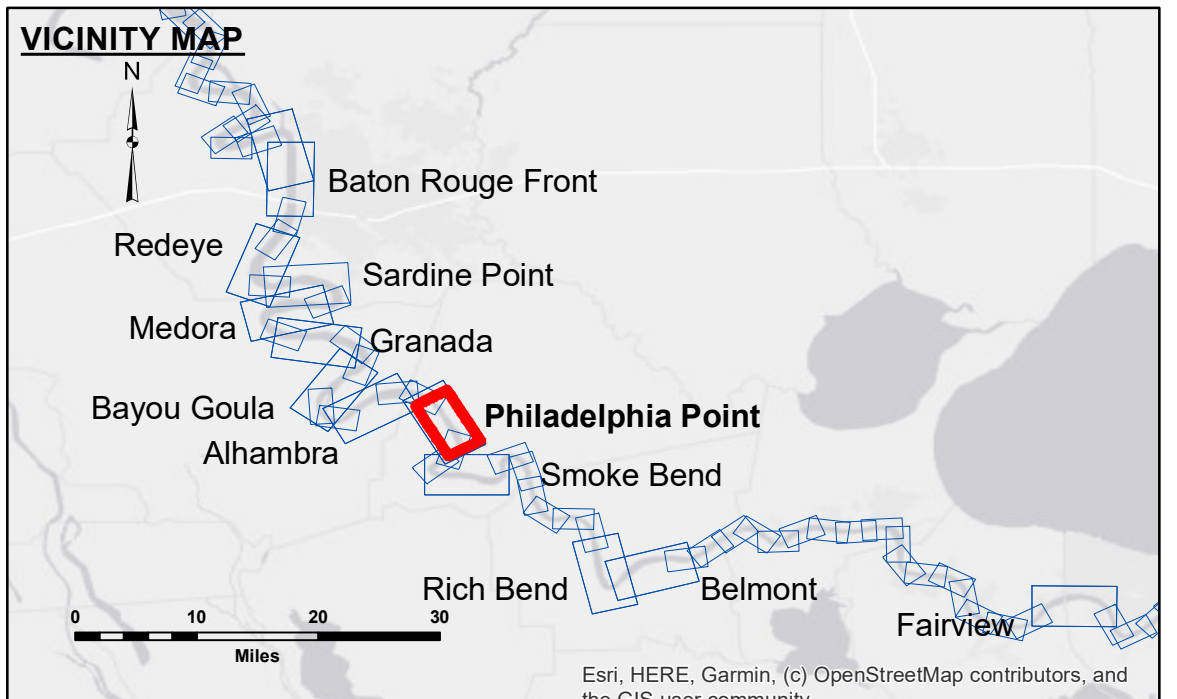


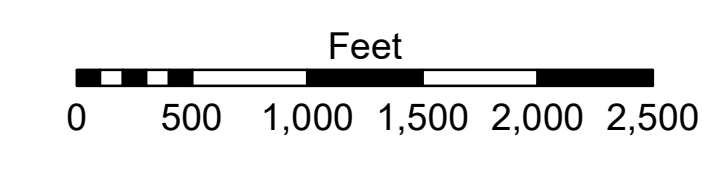
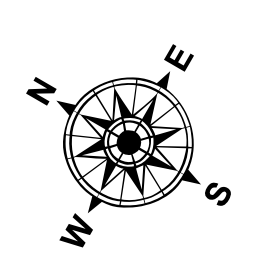
DISCLAIMER
 The data represented in this map is the result of a survey conducted by the United States Army Corps of Engineers for the purpose of determining the location and depth of the crossing. The data is not intended for navigation and is not to be used for any purpose other than that for which it was collected. The user is responsible for the accuracy, completeness, and reliability of the data for any purpose other than that for which it was collected. The user is responsible for the accuracy, completeness, and reliability of the data for any purpose other than that for which it was collected. The user is responsible for the accuracy, completeness, and reliability of the data for any purpose other than that for which it was collected.

Submitted:	Surveyed By:	Checked By:
Recommended:	Ryland/Simmons	AC
Approved:	Plotted By:	
	BD	

MISSISSIPPI RIVER - B.R. TO GULF PHILADELPHIA POINT CROSSING
MD_19_PHP_20220525_CS
25 May 2022



LEGEND	
--- Federal Navigation Channel	0' and above
— Federal Navigation Center Line	0' to -5'
— As-built Pipeline/Cable	-5' to -10'
..... Unconfirmed Pipeline/Cable	-10' to -20'
— Project Depth Contour	-20' to -30'
○ Cable Area	-30' to -35'
□ Placement Area	-35' to -40'
□ Anchorage Area	-40' to -45'
⊗ Obstruction Point	-45' and below
★ Beacon, General	
◆ Red Navigation Buoy	
◆ Green Navigation Buoy	
□ Borrow Area	
● Shoalest Sounding**	
◆ Wrecks-Submerged	



LWRP: 1.5
 Gage Reading: BR:32.0 D:21.7 USED:23.1 NAVD
 Sea Conditions: CALM
 Vessel Name: OB-189
 Survey Type: CONDITION
 Sounding Frequency***: HIGH

NOTES:
 Horizontal Coordinate System:
 North American Datum of 1983 (NAD83), projected to the State Plane Coordinate System (SPCS), Louisiana South Zone. Distance units in U.S. Survey Feet.
 Vertical Datum:
 Soundings are shown in feet and indicate depths below Low Water Reference Plane 2007 (NAVD).
 Distances on the Mississippi River, above and below Head of Passes are shown at 1 mile intervals.
 The location of navigation aids are based on and provided by the U.S. Coast Guard and USACE crew.
 2015 Aerial Photography data source: NAIP, USDA-FSA-APFO Aerial Photography Field Office.
 Reference is N.O.A. Navigation Chart No. 11370.
 ** Shoalest Sounding per Quarter per Reach.
 *** High frequency (200 kHz) survey data represents the first signal return at a sounding location and will include suspended solids, known as "fluff", if present. Low frequency (20 kHz) survey data normally penetrates through this "fluff" layer to depict elevations of consolidated bottom material. Low frequency accuracies may vary depending on channel conditions and bathymeter settings.

Sheet Reference Number
19 of 97