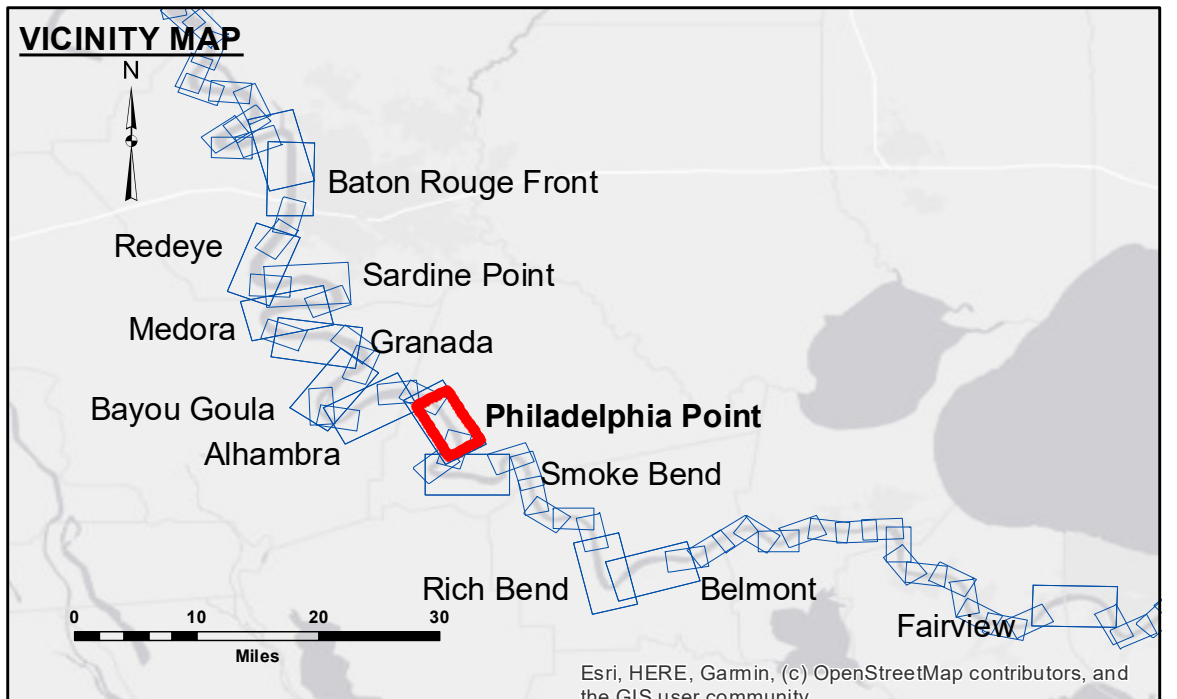


**DISCLAIMER:** The United States Government furnishes these data and the recipient accepts and uses them with the express understanding that the data are not warranted for any particular purpose of the recipient, and that the recipient is responsible for the results of its use. The recipient shall indemnify and hold the United States Government harmless from and against all claims, damages, losses, and expenses, including reasonable attorneys' fees, that may be incurred by the United States Government as a result of the recipient's use of these data. The recipient shall also indemnify and hold the United States Government harmless from and against all claims, damages, losses, and expenses, including reasonable attorneys' fees, that may be incurred by the recipient as a result of its use of these data. The recipient shall also indemnify and hold the United States Government harmless from and against all claims, damages, losses, and expenses, including reasonable attorneys' fees, that may be incurred by the recipient as a result of its use of these data.

U.S. ARMY CORPS OF ENGINEERS NEW ORLEANS DISTRICT		
Submitted:	Surveyed By: SPKR	Plotted By: BD
Recommended:	Checked By: ADJH	Checked By: ADJH
Approved:		

**MISSISSIPPI RIVER - B.R. TO GULF  
PHILADELPHIA POINT CROSSING  
MD\_19\_PHP\_20221018\_CS  
18 October 2022**



LEGEND		SOUNDING DEPTHS	
--- Federal Navigation Channel	○ Cable Area	Green	0' and above
— Federal Navigation Center Line	□ Placement Area	Yellow	0' to -5'
— As-built Pipeline/Cable	□ Anchorage Area	Orange	-5' to -10'
..... Unconfirmed Pipeline/Cable	⊗ Obstruction Point	Light Blue	-10' to -20'
— Project Depth Contour	★ Beacon, General	Blue	-20' to -30'
	◆ Wrecks-Submerged	Dark Blue	-30' to -35'
		Pink	-35' to -40'
		Light Purple	-40' to 45'
		Dark Purple	-45' and below
		White	-45' and below

**LWRP:** 1.5  
**Gage Reading:** BR:4.1 D:2.9 USED:3.1 NAVD  
**Sea Conditions:** CALM  
**Vessel Name:** M/V TECHE  
**Survey Type:** CONDITION  
**Sounding Frequency\*\*\*:** HIGH

**NOTES:**  
 Horizontal Coordinate System:  
 North American Datum of 1983 (NAD83), projected to the State Plane  
 Coordinate System (SPCS), Louisiana South Zone. Distance units in U.S. Survey Feet.  
 Vertical Datum:  
 Soundings are shown in feet and indicate depths below Low Water Reference Plane 2007 (NAVD).  
 Distances on the Mississippi River, above and below Head of Passes are shown  
 at 1 mile intervals.  
 The location of navigation aids are based on and provided by the U.S. Coast Guard and USACE crew.  
 2015 Aerial Photography data source: NAIP, USDA-FSA-APFO Aerial Photography Field Office.  
 Reference is N.O.A.A. Navigation Chart No. 11370.  
 \*\*\* Shoalest Sounding per Quarter per Reach.  
 \*\*\* High frequency (200 kHz) survey data represents the first signal return at a sounding  
 location and will include suspended solids, known as "fluff", if present. Low frequency (20 kHz)  
 survey data normally penetrates through this "fluff" layer to depict elevations of consolidated bottom  
 material. Low frequency accuracies may vary depending on channel conditions and bathymeter  
 settings.

**Sheet  
Reference  
Number  
19 of 97**