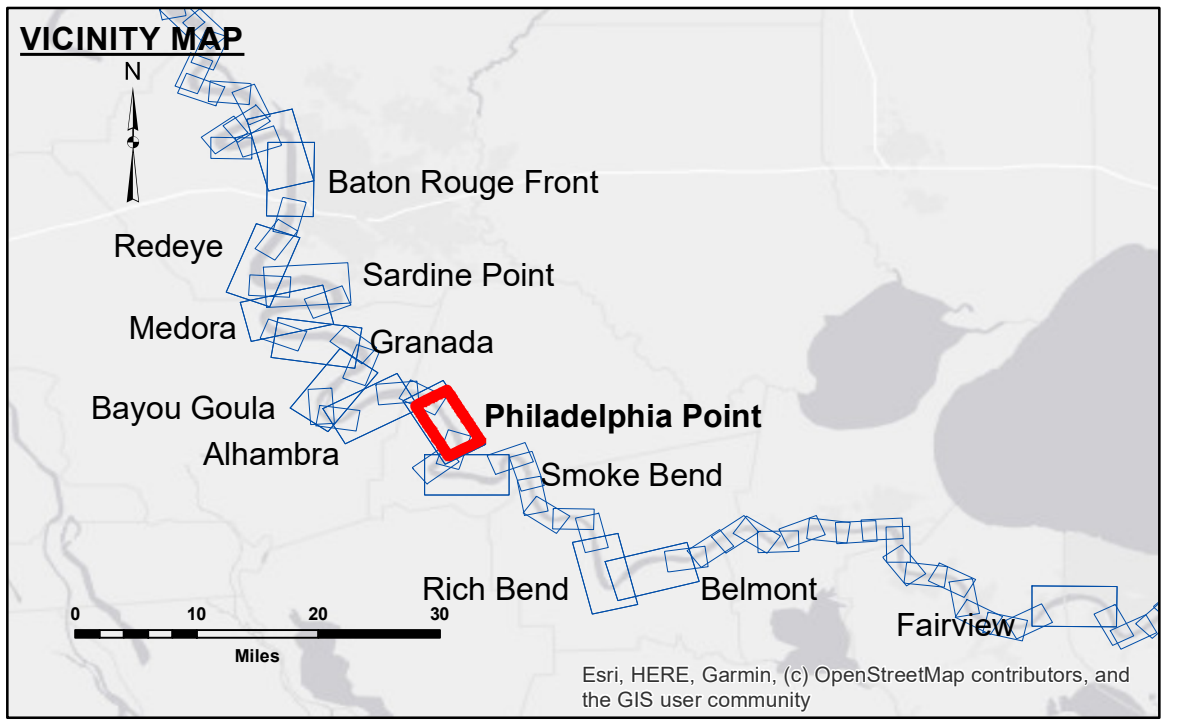


Distribution Liability: The data represents the results of data collection/processing for a specific US Army Corps of Engineers project. It is only valid for its intended use, context, time and accuracy specifications. The user is responsible for the results. The user's application of the data for other than its intended purpose is at their own risk. The user assumes all liability for any use of the data. Data Constants: Hydrographic survey data is subject to change rapidly due to several factors including but not limited to changing hydrographic conditions which develop after the date of the survey. The information depicted on this map represents the results of a survey conducted on the date shown. The information is not considered to represent the general condition existing at that time.

| | | |
|--|--------------------------------|-------------------|
| U.S. ARMY CORPS OF ENGINEERS NEW ORLEANS DISTRICT | | |
| Submitted: | Surveyed By: RYLAND/SIMMONS | Plotted By: JH |
| Recommended: | Checked By: JH | Checked By: JH |
| Approved: | Checked By: JH | Checked By: JH |

**MISSISSIPPI RIVER - B.R. TO GULF
PHILADELPHIA POINT CROSSING
MD_19_PHP_20230628_CS
28 June 2023**



| LEGEND | | |
|----------------------------------|---------------------|-------------------------|
| --- Federal Navigation Channel | ○ Cable Area | □ Borrow Area |
| — Federal Navigation Center Line | ▭ Placement Area | ● Shoalest Sounding** |
| — As-built Pipeline/Cable | ⊗ Anchorage Area | ★ Beacon, General |
| ⋯ Unconfirmed Pipeline/Cable | ⊗ Obstruction Point | ◆ Red Navigation Buoy |
| — Project Depth Contour | ⚓ Wrecks-Submerged | ◆ Green Navigation Buoy |
| | | 0' and above |
| | | 0' to -5' |
| | | -5' to -10' |
| | | -10' to -20' |
| | | -20' to -30' |
| | | -30' to -35' |
| | | -35' to -40' |
| | | -40' to 45' |
| | | -45' and below |

LWRP: 1.5
 Gage Reading: BR:6.8 D:3.3 USED: 3.80 NAVD
 Sea Conditions: CALM
 Vessel Name: LAFORCHE
 Survey Type: CS
 Sounding Frequency***: HIGH

NOTES:

Horizontal Coordinate System:
North American Datum of 1983 (NAD83), projected to the State Plane Coordinate System (SPCS), Louisiana South Zone. Distance units in U.S. Survey Feet.

Vertical Datum:
Soundings are shown in feet and indicate depths below Low Water Reference Plane 2007 (NAVD).

Distances on the Mississippi River, above and below Head of Passes are shown at 1 mile intervals.

The location of navigation aids are base on and provided by the U.S. Coast Guard and USACE crew.

2015 Aerial Photography data source: NAIP, USDA-FSA-APFO Aerial Photography Field Office.

Reference is N.O.A. Navigation Chart No. 11370.

** Shoalest Sounding per Quarter per Reach.

*** High frequency (200 kHz) survey data represents the first signal return at a sounding location and will include suspended solids, known as "fluff", if present. Low frequency (20 kHz) survey data normally penetrates through this "fluff" layer to depict elevations of consolidated bottom material. Low frequency accuracies may vary depending on channel conditions and fathometer settings.

**Sheet Reference Number
19 of 97**