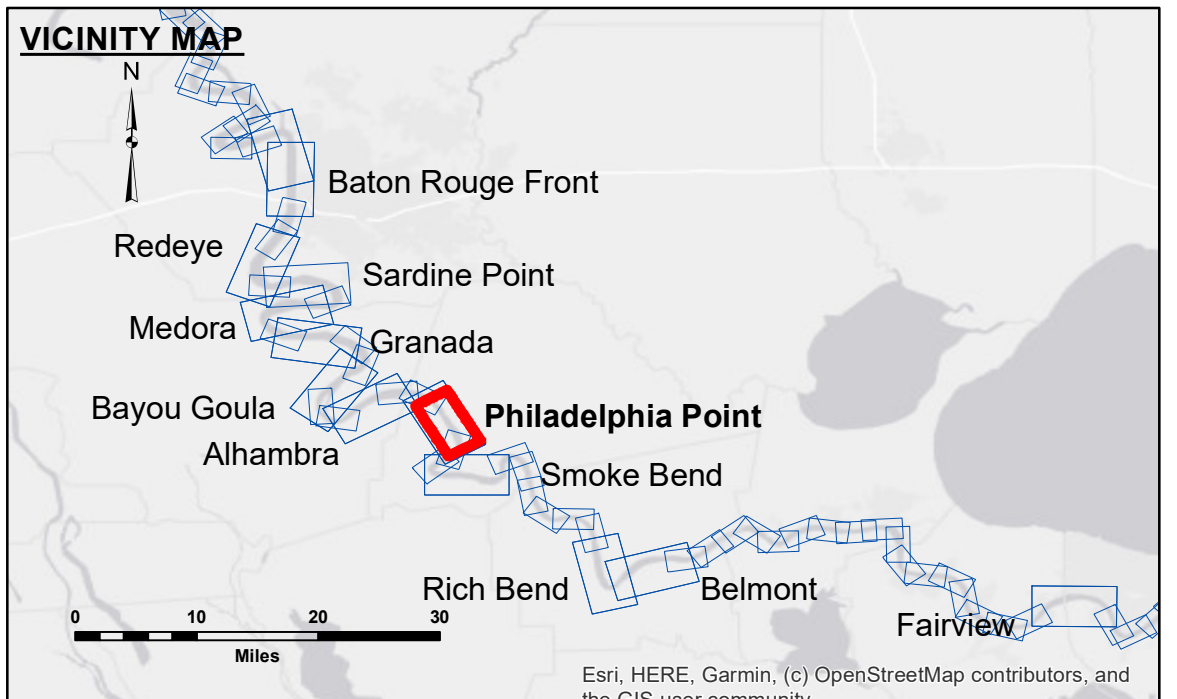


DISCLAIMER
 The information depicted on this map represents the results of a survey conducted by the United States Government. The data represents the results of a collection of data for a specific US Army Corps of Engineers project. It is not intended for use in any other project, and its use in any other project is at the user's own risk. The user is responsible for the results of any use of this data. The US Army Corps of Engineers does not warrant the accuracy, reliability, or availability of the data for any purpose other than that for which it was collected. The user is responsible for the results of any use of this data. The US Army Corps of Engineers does not warrant the accuracy, reliability, or availability of the data for any purpose other than that for which it was collected. The user is responsible for the results of any use of this data.

Submitted:	Surveyed By: RYLAND/SIMMONS
Recommended:	Plotted By: JHI
Approved:	Checked By: JHI

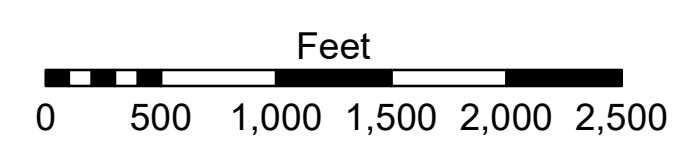
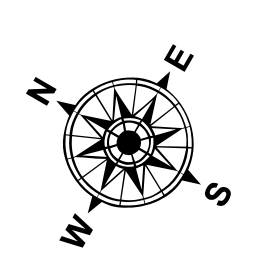
U.S. ARMY CORPS OF ENGINEERS
 NEW ORLEANS DISTRICT

**MISSISSIPPI RIVER - B.R. TO GULF
 PHILADELPHIA POINT CROSSING
 MD_19_PHP_20230919_CS
 19 September 2023**



LEGEND		
--- Federal Navigation Channel	○ Cable Area	□ Borrow Area
— Federal Navigation Center Line	▭ Placement Area	● Shoalest Sounding**
— As-built Pipeline/Cable	⊗ Anchorage Area	★ Beacon, General
⋯ Unconfirmed Pipeline/Cable	⊗ Obstruction Point	◆ Red Navigation Buoy
— Project Depth Contour	⚓ Wrecks-Submerged	◆ Green Navigation Buoy

0' and above	0' to -5'
-5' to -10'	-10' to -20'
-20' to -30'	-30' to -35'
-35' to -40'	-40' to -45'
-45' and below	



LWRP: 1.5
 Gage Reading: BR:4.1 D:1.9 USED: 2.30 NAVD
 Sea Conditions: CALM
 Vessel Name: LAFORCHE
 Survey Type: CS
 Sounding Frequency***: HIGH

NOTES:
 Horizontal Coordinate System:
 North American Datum of 1983 (NAD83), projected to the State Plane Coordinate System (SPCS), Louisiana South Zone. Distance units in U.S. Survey Feet.
 Vertical Datum:
 Soundings are shown in feet and indicate depths below Low Water Reference Plane 2007 (NAVD).
 Distances on the Mississippi River, above and below Head of Passes are shown at 1 mile intervals.
 The location of navigation aids are based on and provided by the U.S. Coast Guard and USACE crew.
 2015 Aerial Photography data source: NAIP, USDA-FSA-APFO Aerial Photography Field Office.
 Reference is N.O.A. Navigation Chart No. 11370.
 ** Shoalest Sounding per Quarter per Reach.
 *** High frequency (200 kHz) survey data represents the first signal return at a sounding location and will include suspended solids, known as "fluff", if present. Low frequency (20 kHz) survey data normally penetrates through this "fluff" layer to depict elevations of consolidated bottom material. Low frequency accuracies may vary depending on channel conditions and fathometer settings.

**Sheet Reference Number
 19 of 97**

Revision Number:
 4-2-2024(4/2)