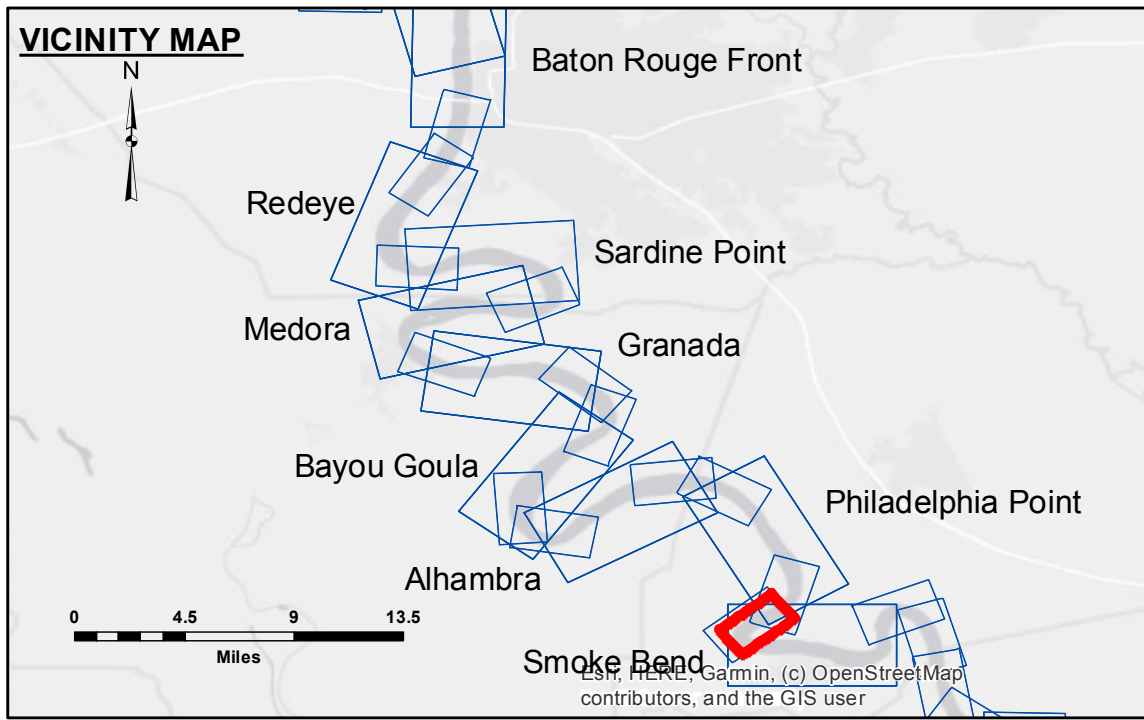


DISCLAIMER: The United States Government furnishes these data and the recipient accepts and uses them with the express understanding that the Government makes no warranty, expressed or implied, concerning the accuracy, completeness, reliability, or suitability for any particular purpose of the information. The user is responsible for the results of any use of the information, and the user agrees to indemnify the United States Government from and against all claims, damages, losses, and expenses, including reasonable attorneys' fees, that may be incurred by the United States Government as a result of the use of the information. The information depicted on this map represents the results of a survey conducted under contract to the United States Army Corps of Engineers. The information is not to be used for any purpose other than that for which it was intended. The information is not to be used for any purpose other than that for which it was intended. The information is not to be used for any purpose other than that for which it was intended.

| | |
|--|------------------------------|
| U.S. ARMY CORPS OF ENGINEERS NEW ORLEANS DISTRICT | |
| Submittal: | Surveyed By: RYLAND/ADAMS |
| Recommendation: | Plotted By: AC |
| Approval: | Checked By: AC |

MISSISSIPPI RIVER - B.R. TO GULF
81 MILE POINT
MD_21_81PX_20210324_CS
24 March 2021



LEGEND

| | | | |
|----------------------------------|---------------------|-------------------------|------------------|
| --- Federal Navigation Channel | ○ Cable Area | ■ Shoaling Area | ■ 0' and above |
| — Federal Navigation Center Line | □ Placement Area | ● Shoalest Sounding** | ■ 0' to -5' |
| — As-built Pipeline/Cable | ⊗ Anchorage Area | ★ Beacon, General | ■ -5' to -10' |
| Unconfirmed Pipeline/Cable | ⊗ Obstruction Point | ◆ Red Navigation Buoy | ■ -10' to -20' |
| — Project Depth Contour | ⚓ Wrecks-Submerged | ◆ Green Navigation Buoy | ■ -20' to -30' |
| | | | ■ -30' to -35' |
| | | | ■ -35' to -40' |
| | | | ■ -40' to -45' |
| | | | ■ -45' and below |

LWRP: 1.5
Gage Reading: BR:34.9D:24.5 USED:25.2 NAVD
Sea Conditions: CALM
Vessel Name: M/V VALENTOUR
Survey Type: CONDITION
Sounding Frequency*:** HIGH

Feet
 0 500 1,000 1,500 2,000 2,500

NOTES:
 Horizontal Coordinate System:
 North American Datum of 1983 (NAD83), projected to the State Plane
 Coordinate System (SPCS), Louisiana South Zone. Distance units in U.S. Survey Feet.
 Vertical Datum:
 Soundings are shown in feet and indicate depths below Low Water Reference Plane 2007 (NAVD).
 Distances on the Mississippi River, above and below Head of Passes are shown
 at 1 mile intervals.
 The location of navigation aids are based on and provided by the U.S. Coast Guard and USACE crew.
 2017 Aerial Photography data source: NAIP, USDA-FSA-APFO Aerial Photography Field Office.
 Reference is N.O.A. Navigation Chart No. 11370.
 ** Shoalest Sounding per Quarter per Reach.
 *** High frequency (200 kHz) survey data represents the first signal return at a sounding
 location and will include suspended solids, known as "fluff", if present. Low frequency (20 kHz)
 survey data normally penetrates through this "fluff" layer to depict elevations of consolidated bottom
 material. Low frequency accuracies may vary depending on channel conditions and bathymeter
 settings.

Sheet Reference Number
21 of 97

Revision Number:
 4.1-20191105