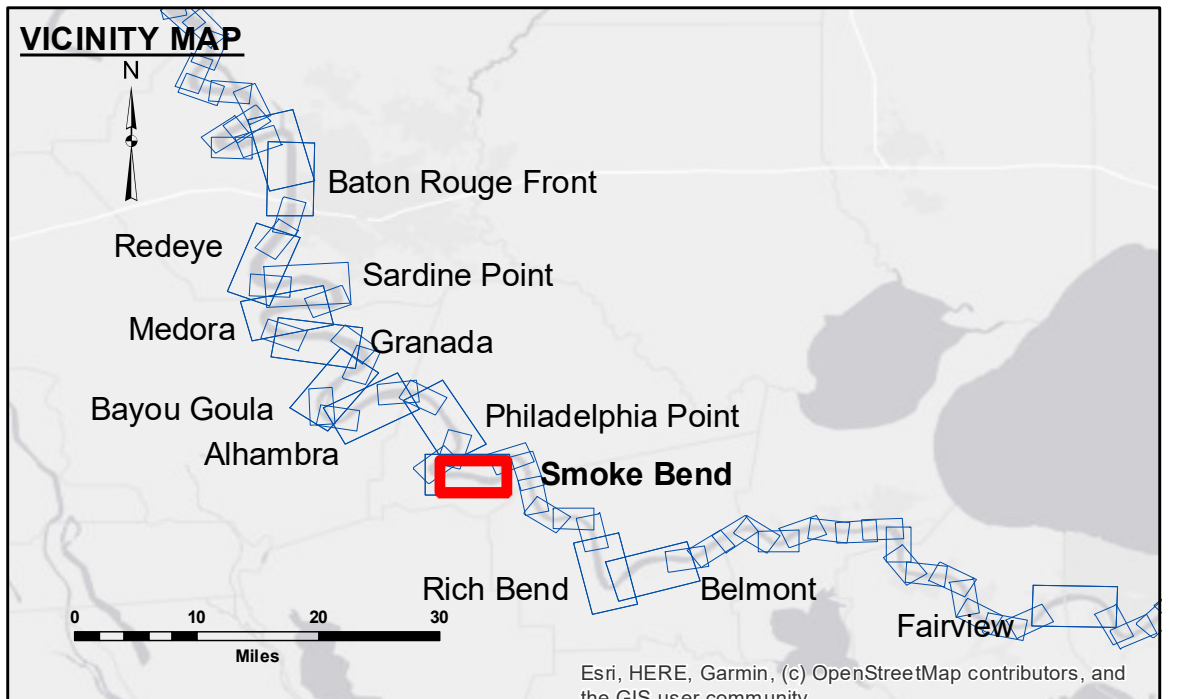


DISCLAIMER: The data represents the results of data collection processing for a specific US Army Corps of Engineers project. The data is not intended for use in any other project or for any other purpose. The user is responsible for the results of any use of the data. The application of the data for other than its intended purpose is not supported. The user is responsible for the results of any use of the data. The application of the data for other than its intended purpose is not supported. The user is responsible for the results of any use of the data. The application of the data for other than its intended purpose is not supported.

Submitted:	RYLAND/ADAMS
Recommended:	BD
Approved:	AC

**MISSISSIPPI RIVER - B.R. TO GULF
SMOKE BEND CROSSING
MD_22_SMB_20191023_CS
23 October 2019**



LEGEND

--- Federal Navigation Channel	○ Cable Area	□ Borrow Area	■ 0' and above
— Federal Navigation Center Line	□ Placement Area	● Shoalest Sounding**	■ 0' to -5'
— As-built Pipeline/Cable	□ Anchorage Area	★ Beacon, General	■ -5' to -10'
..... Unconfirmed Pipeline/Cable	⊗ Obstruction Point	◆ Red Navigation Buoy	■ -10' to -20'
— Project Depth Contour	⚓ Wrecks-Submerged	◆ Green Navigation Buoy	■ -20' to -30'
			■ -30' to -35'
			■ -35' to -40'
			■ -40' to -45'
			■ -45' and below

NOTES:

Horizontal Coordinate System:
North American Datum of 1983 (NAD83), projected to the State Plane Coordinate System (SPCS), Louisiana South Zone. Distance units in U.S. Survey Feet.

Vertical Datum:
Soundings are shown in feet and indicate depths below Low Water Reference Plane 2007 (NAVD).

Distances on the Mississippi River, above and below Head of Passes are shown at 1 mile intervals.

The location of navigation aids are base on and provided by the U.S. Coast Guard and USACE crew.

2015 Aerial Photography data source: NAIP, USDA-FSA-APFO Aerial Photography Field Office.

Reference is N.O.A. Navigation Chart No. 11370.

** Shoalest Sounding per Quarter per Reach.

*** High frequency (200 kHz) survey data represents the first signal return at a sounding location and will include suspended solids, known as "fluff", if present. Low frequency (20 kHz) survey data normally penetrates through this "fluff" layer to depict elevations of consolidated bottom material. Low frequency accuracies may vary depending on channel conditions and fathometer settings.

LWRP: 1.4
Gage Reading: BR:20.9 D:12.7 USED:12.70 NAVD
Sea Conditions: CALM
Vessel Name: M/V VALENTOUR
Survey Type: CONDITION
Sounding Frequency***: HIGH

**Sheet Reference Number
22 of 97**