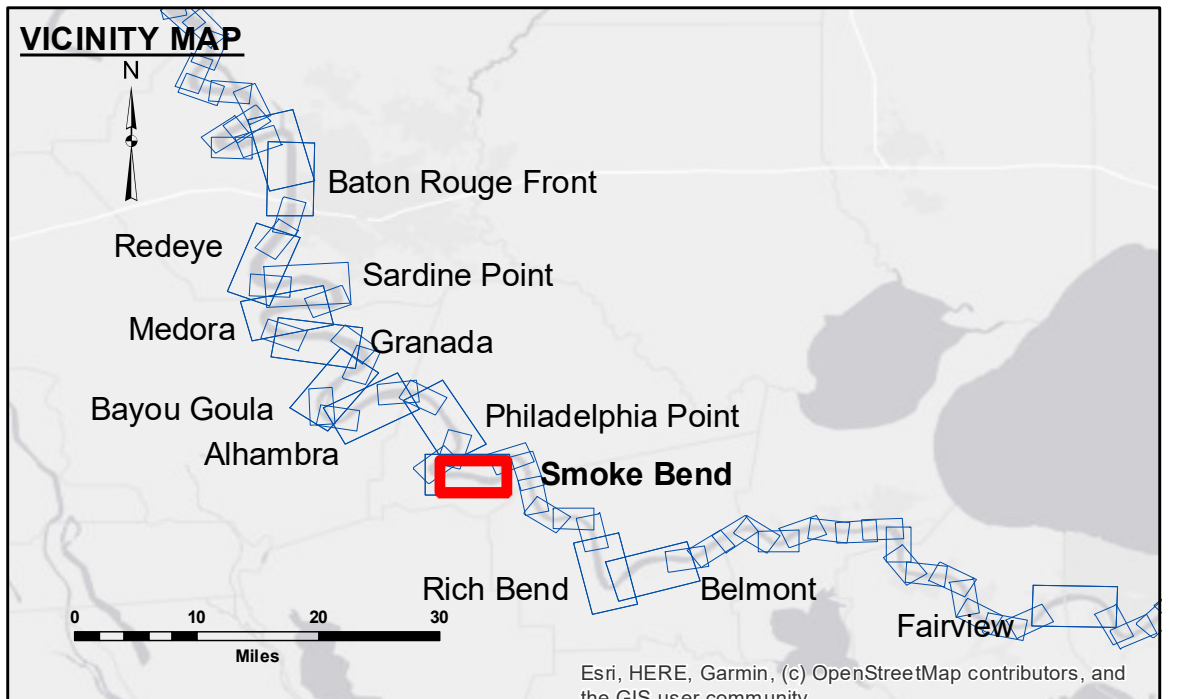


**DISCLAIMER:** The data represents the results of data collection processing for a specific US Army Corps of Engineers project. The data is not intended for use in any other project or for any other purpose. The user is responsible for the results and accuracy of the data. The application of the data for other than its intended purpose is not supported. The user is responsible for the results and accuracy of the data. The application of the data for other than its intended purpose is not supported. The user is responsible for the results and accuracy of the data. The application of the data for other than its intended purpose is not supported.

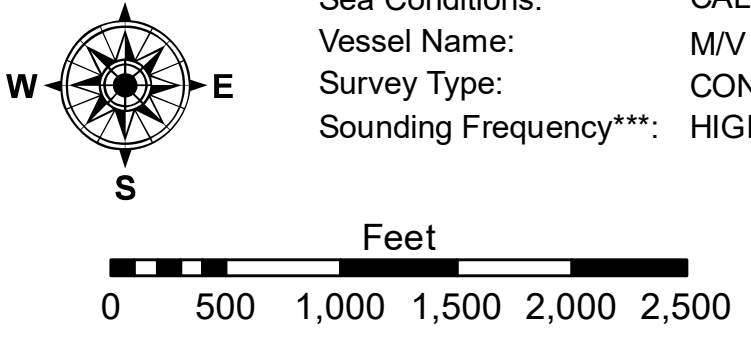
U.S. ARMY CORPS OF ENGINEERS NEW ORLEANS DISTRICT	
Submitted:	Surveyed By: DIS/SJR
Recommended: Chief Survey Section	Plotted By: BD
Approved: Chief Waterways Maintenance Section	Checked By: AC

**MISSISSIPPI RIVER - B.R. TO GULF  
SMOKE BEND CROSSING  
MD\_22\_SMB\_20191211\_CS  
11 December 2019**



LEGEND			
	Federal Navigation Channel		0' and above
	Federal Navigation Center Line		0' to -5'
	As-built Pipeline/Cable		-5' to -10'
	Unconfirmed Pipeline/Cable		-10' to -20'
	Project Depth Contour		-20' to -30'
	Cable Area		-30' to -35'
	Placement Area		-35' to -40'
	Borrow Area		-40' to 45'
	Shoalest Sounding**		-45' and below
	Beacon, General		
	Red Navigation Buoy		
	Green Navigation Buoy		
	Obstruction Point		
	Wrecks-Submerged		

**LWRP:** 1.4  
**Gage Reading:** BR:28.4 D:18.9 USED:18.8 NAVD  
**Sea Conditions:** CALM  
**Vessel Name:** M/V LAFOURCHE  
**Survey Type:** CONDITION  
**Sounding Frequency\*\*\*:** HIGH



**NOTES:**

Horizontal Coordinate System:  
North American Datum of 1983 (NAD83), projected to the State Plane Coordinate System (SPCS), Louisiana South Zone. Distance units in U.S. Survey Feet.

Vertical Datum:  
Soundings are shown in feet and indicate depths below Low Water Reference Plane 2007 (NAVD).

Distances on the Mississippi River, above and below Head of Passes are shown at 1 mile intervals.

The location of navigation aids are based on and provided by the U.S. Coast Guard and USACE crew.

2015 Aerial Photography data source: NAIP, USDA-FSA-APFO Aerial Photography Field Office.

Reference is N.O.A. Navigation Chart No. 11370.

\*\* Shoalest Sounding per Quarter per Reach.

\*\*\* High frequency (200 kHz) survey data represents the first signal return at a sounding location and will include suspended solids, known as "fluff", if present. Low frequency (20 kHz) survey data normally penetrates through this "fluff" layer to depict elevations of consolidated bottom material. Low frequency accuracies may vary depending on channel conditions and fathometer settings.

**Sheet Reference Number  
22 of 97**