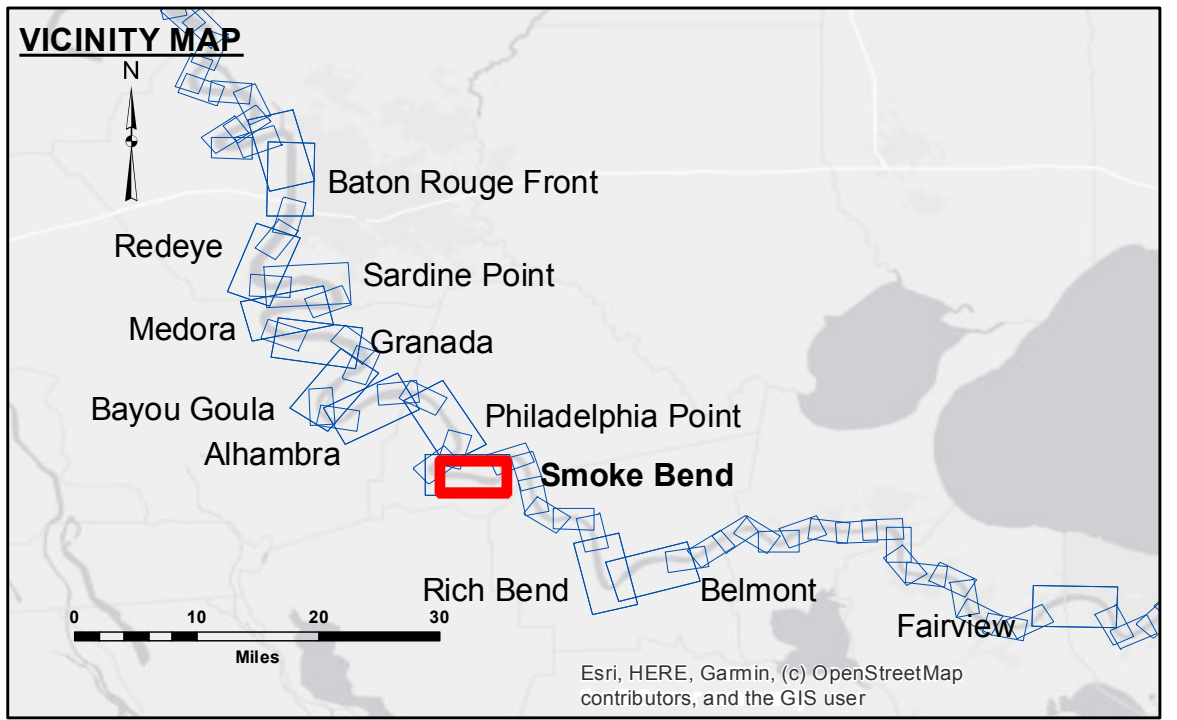


DISCLAIMER: The United States Government furnishes these data and the recipient accepts and uses them with the express understanding that the Government makes no warranty, expressed or implied, concerning the accuracy, completeness, reliability, suitability or availability for any particular purpose of the information furnished hereunder. The recipient may not transfer these data to others without obtaining the prior written consent of the United States Government. The information depicted on this map represents the results of a survey conducted on the ground and is not to be used as a substitute for a field inspection. The user is responsible for the results of any use of this information. The application of the data for other than its intended purpose may result in injury, death or property damage. The user assumes all liability for any use of this information. The information depicted on this map represents the results of a survey conducted on the ground and is not to be used as a substitute for a field inspection. The user is responsible for the results of any use of this information. The application of the data for other than its intended purpose may result in injury, death or property damage. The user assumes all liability for any use of this information.

U.S. ARMY CORPS OF ENGINEERS NEW ORLEANS DISTRICT	
Submitted:	RYLAND/ADAMS
Recommended:	Chief, Survey Section
Approved:	Chief, Waterways Maintenance Section
Surveyed By:	AO
Plotted By:	AO
Checked By:	AO

**MISSISSIPPI RIVER - B.R. TO GULF
SMOKE BEND CROSSING
MD_22_SMB_20210324_CS
24 March 2021**



LEGEND

--- Federal Navigation Channel	○ Cable Area	□ Borrow Area	■ 0' and above
— Federal Navigation Center Line	□ Placement Area	● Shoalest Sounding**	■ 0' to -5'
— As-built Pipeline/Cable	□ Anchorage Area	★ Beacon, General	■ -5' to -10'
..... Unconfirmed Pipeline/Cable	⊗ Obstruction Point	◆ Red Navigation Buoy	■ -10' to -20'
— Project Depth Contour	✶ Wrecks-Submerged	◆ Green Navigation Buoy	■ -20' to -30'
			■ -30' to -35'
			■ -35' to -40'
			■ -40' to -45'
			■ -45' and below

NOTES:

Horizontal Coordinate System:
North American Datum of 1983 (NAD83), projected to the State Plane Coordinate System (SPCS), Louisiana South Zone. Distance units in U.S. Survey Feet.

Vertical Datum:
Soundings are shown in feet and indicate depths below Low Water Reference Plane 2007 (NAVD).

Distances on the Mississippi River, above and below Head of Passes are shown at 1 mile intervals.

The location of navigation aids are base on and provided by the U.S. Coast Guard and USACE crew.

2015 Aerial Photography data source: NAIP, USDA-FSA-APFO Aerial Photography Field Office.

Reference is N.O.A.A. Navigation Chart No. 11370.

** Shoalest Sounding per Quarter per Reach.

*** High frequency (200 kHz) survey data represents the first signal return at a sounding location and will include suspended solids, known as "fluff", if present. Low frequency (20 kHz) survey data normally penetrates through this "fluff" layer to depict elevations of consolidated bottom material. Low frequency accuracies may vary depending on channel conditions and fathometer settings.

LWRP: 1.4
Gage Reading: BR:34.9D:24.5 USED:24.4 NAVD
Sea Conditions: CALM
Vessel Name: M/V VALENTOUR
Survey Type: CONDITION
Sounding Frequency***: HIGH

Feet
0 500 1,000 1,500 2,000 2,500

Sheet Reference Number
22 of 97