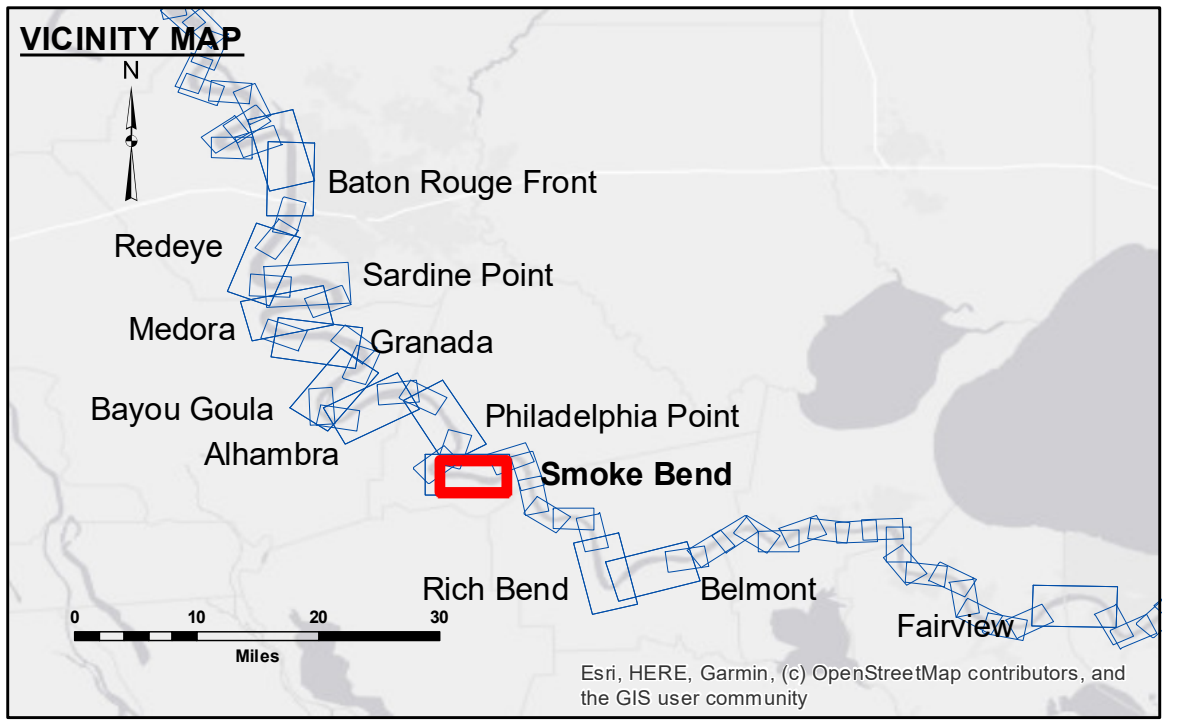


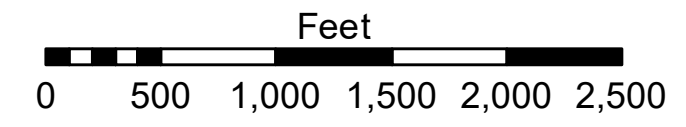
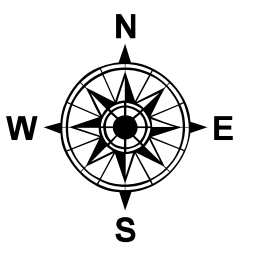
**DISCLAIMER:** The data represents the results of data collection processing for a specific US Army Corps of Engineers project. The data is only valid for its intended use, control, time and accuracy specifications. The user is responsible for the results. The user must verify the application of the data for other than its intended purpose. Data Contaminants: Hydrographic survey data is subject to change due to several factors including but not limited to dredging, sedimentation, and channel migration. The user must verify the data for its intended use. The information depicted on this map represents the results of a survey conducted on the ground. The user is responsible for the accuracy of the information depicted on this map. The user must verify the information depicted on this map against the ground conditions existing at that time.

Submitted:	Surveyed By:
Recommended:	RYLANDSONNIER
Plotted By:	BD
Checked By:	AC

**MISSISSIPPI RIVER - B.R. TO GULF  
SMOKE BEND CROSSING  
MD\_22\_SMB\_2021070\_CS  
10 July 2021**



LEGEND		
--- Federal Navigation Channel	○ Cable Area	■ Borrow Area
— Federal Navigation Center Line	□ Placement Area	● Shoalest Sounding**
— As-built Pipeline/Cable	□ Anchorage Area	★ Beacon, General
..... Unconfirmed Pipeline/Cable	⊗ Obstruction Point	◆ Red Navigation Buoy
— Project Depth Contour	✈ Wrecks-Submerged	◆ Green Navigation Buoy
		0' and above
		0' to -5'
		-5' to -10'
		-10' to -20'
		-20' to -30'
		-30' to -35'
		-35' to -40'
		-40' to -45'
		-45' and below



LWRP: 1.4  
Gage Reading: BR:25.3 D:15.8 USED:15.70 NAVD  
Sea Conditions: CALM  
Vessel Name: OB-167  
Survey Type: CS  
Sounding Frequency\*\*\*: HIGH

**NOTES:**  
Horizontal Coordinate System: North American Datum of 1983 (NAD83), projected to the State Plane Coordinate System (SPCS), Louisiana South Zone. Distance units in U.S. Survey Feet.  
Vertical Datum: Soundings are shown in feet and indicate depths below Low Water Reference Plane 2007 (NAVD).  
Distances on the Mississippi River, above and below Head of Passes are shown at 1 mile intervals.  
The location of navigation aids are based on and provided by the U.S. Coast Guard and USACE crew.  
2015 Aerial Photography data source: NAIP, USDA-FSA-APFO Aerial Photography Field Office.  
Reference is N.O.A. Navigation Chart No. 11370.  
\*\* Shoalest Sounding per Quarter per Reach.  
\*\*\* High frequency (200 kHz) survey data represents the first signal return at a sounding location and will include suspended solids, known as "fluff", if present. Low frequency (20 kHz) survey data normally penetrates through this "fluff" layer to depict elevations of consolidated bottom material. Low frequency accuracies may vary depending on channel conditions and fathometer settings.

**Sheet Reference Number  
22 of 97**