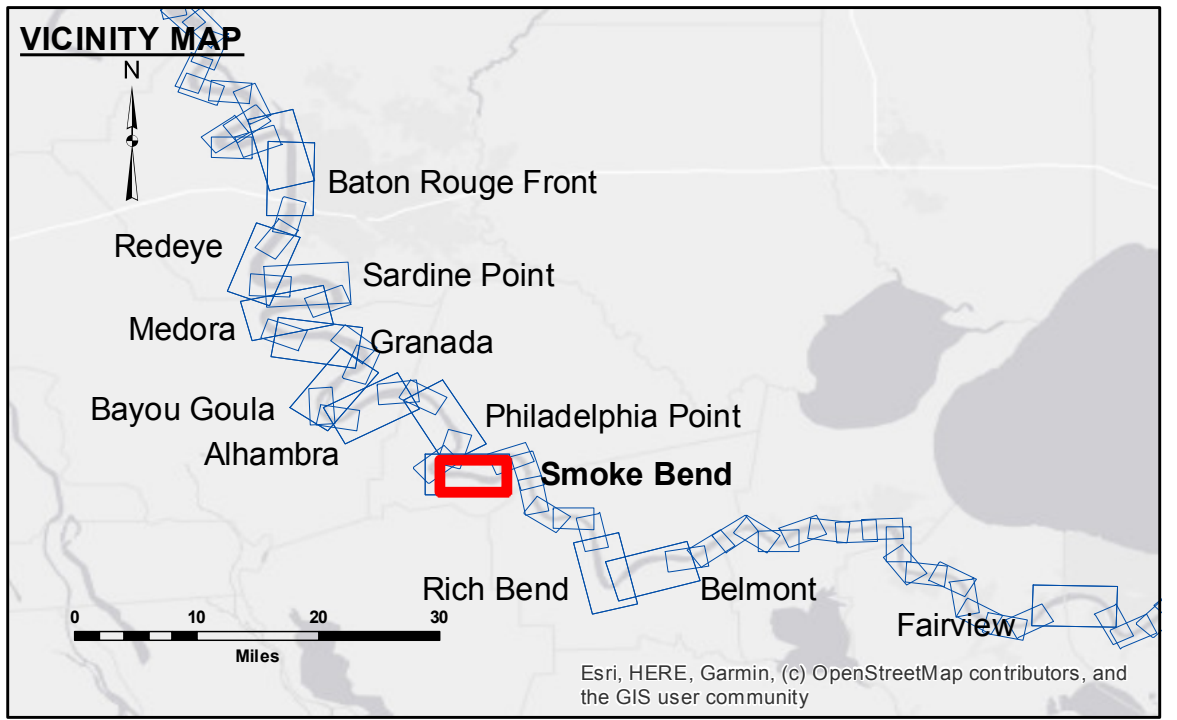


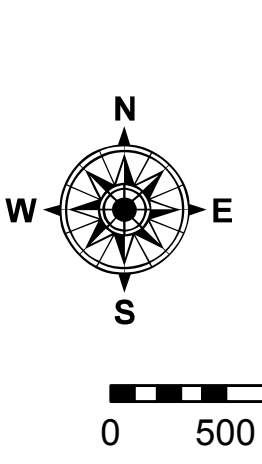
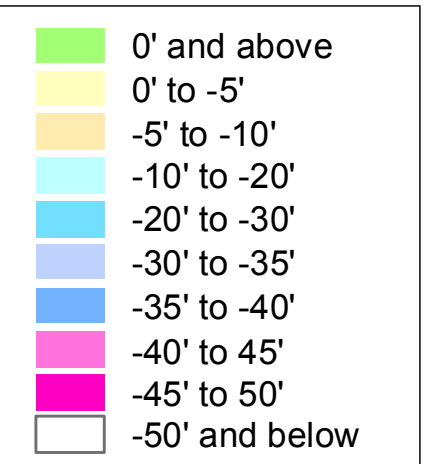
**Accession:** The data represents the results of data collection for a specific U.S. Army Corps of Engineers project. The user is responsible for the results, reliability, usability or suitability for any particular purpose of the data. The user is responsible for the results, reliability, usability or suitability for any particular purpose of the data. The user is responsible for the results, reliability, usability or suitability for any particular purpose of the data. The user is responsible for the results, reliability, usability or suitability for any particular purpose of the data. The user is responsible for the results, reliability, usability or suitability for any particular purpose of the data.

Submitted:	Surveyed By:	RYLAND/ADAMS
Recommended:	Plotted By:	BD
Approved:	Checked By:	AC

**MISSISSIPPI RIVER - B.R. TO GULF**  
**SMOKE BEND CROSSING**  
**MD\_22\_SMB\_20220414\_CS**  
**14 April 2022**



LEGEND		
— Federal Navigation Channel	○ Cable Area	□ Borrow Area
— Federal Navigation Center Line	■ Placement Area	● Shoalest Sounding**
— As-built Pipeline/Cable	□ Anchorage Area	☆ Beacon, General
..... Unconfirmed Pipeline/Cable	⊗ Obstruction Point	♦ Red Navigation Buoy
— Project Depth Contour	✚ Wrecks-Submerged	♦ Green Navigation Buoy



LWRP: 1.4  
 Gage Reading: BR:30.6 D:20.7 USED:20.60 NAVD  
 Sea Conditions: CALM  
 Vessel Name: M/V VALENTOUR  
 Survey Type: CONDITION  
 Sounding Frequency\*\*\*: HIGH

**NOTES:**  
 Horizontal Coordinate System:  
 North American Datum of 1983 (NAD83), projected to the State Plane Coordinate System (SPCS), Louisiana South Zone. Distance units in U.S. Survey Feet.  
 Vertical Datum:  
 Soundings are shown in feet and indicate depths below Low Water Reference Plane 2007 (NAVD).  
 Distances on the Mississippi River, above and below Head of Passes are shown at 1 mile intervals.  
 The location of navigation aids are base on and provided by the U.S. Coast Guard and USACE crew.  
 2015 Aerial Photography data source: NAIP, USDA-FSA-APFO Aerial Photography Field Office.  
 Reference is N.O.A.A. Navigation Chart No. 11370.  
 \*\* Shoalest Sounding per Quarter per Reach.  
 \*\*\* High frequency (200 kHz) survey data represents the first signal return at a sounding location and will include suspended solids, known as "fluff", if present. Low frequency (20 kHz) survey data normally penetrates through this "fluff" layer to depict elevations of consolidated bottom material. Low frequency accuracies may vary depending on channel conditions and fathometer settings.

**Sheet Reference Number**  
**22 of 97**