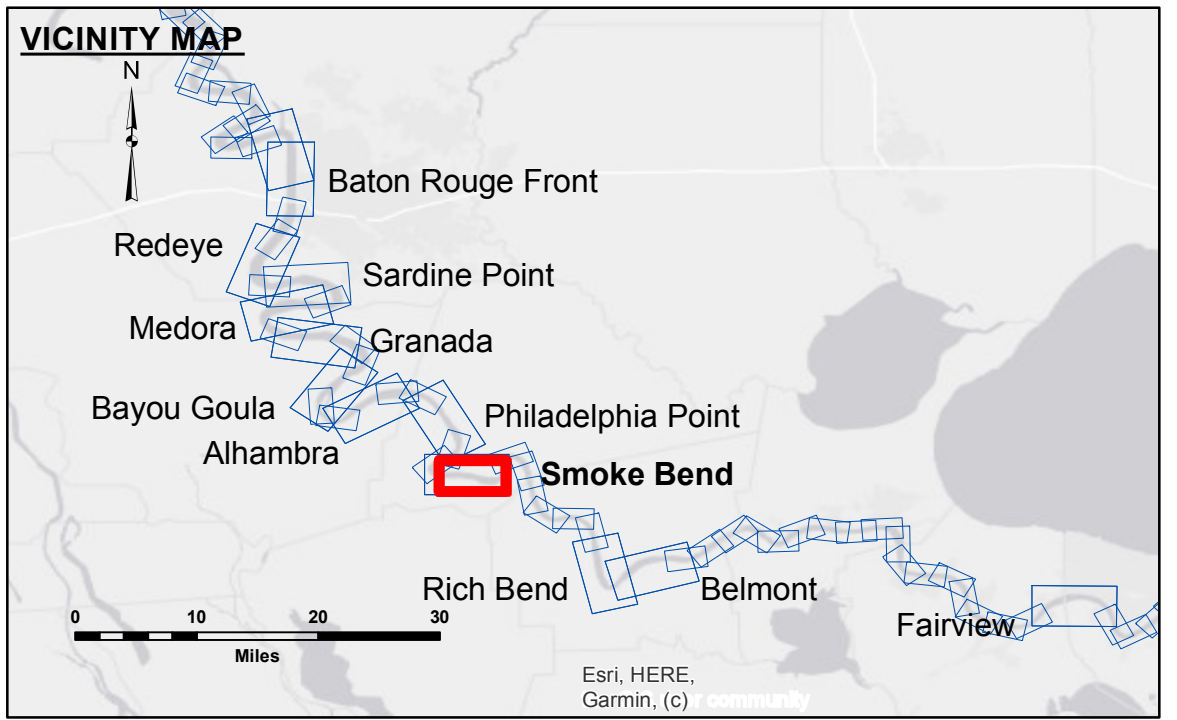


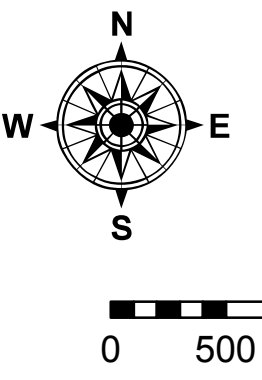
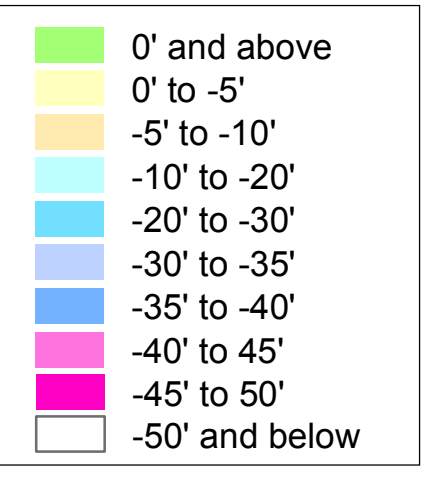
DISCLAIMER
 The information depicted on this map represents the results of a survey conducted under the general condition existing at that time. The user is responsible for the accuracy, completeness, and reliability of the data for its intended use. The user is responsible for the results of any application of the data for other than its intended purpose. The application of the data for other than its intended purpose may result in injury or death. The user is responsible for the results of any application of the data for other than its intended purpose. The application of the data for other than its intended purpose may result in injury or death. The user is responsible for the results of any application of the data for other than its intended purpose. The application of the data for other than its intended purpose may result in injury or death.

Submitted:	Surveyed By:	ADAMS/MOLLERE
Recommended:	Plotted By:	BD
Approved:	Checked By:	AC

MISSISSIPPI RIVER - B.R. TO GULF
SMOKE BEND CROSSING
 MD_22_SMB_20220616_CS
 16 June 2022



LEGEND		
--- Federal Navigation Channel	○ Cable Area	□ Borrow Area
— Federal Navigation Center Line	▭ Placement Area	● Shoalest Sounding**
— As-built Pipeline/Cable	⊗ Anchorage Area	☆ Beacon, General
..... Unconfirmed Pipeline/Cable	⊗ Obstruction Point	◆ Red Navigation Buoy
— Project Depth Contour	✈ Wrecks-Submerged	◆ Green Navigation Buoy



LWRP: 1.4
 Gage Reading: BR:27.4 D:18.0 USED:17.90 NAVD
 Sea Conditions: CALM
 Vessel Name: OB-167
 Survey Type: CONDITION
 Sounding Frequency***: HIGH

NOTES:
 Horizontal Coordinate System:
 North American Datum of 1983 (NAD83), projected to the State Plane Coordinate System (SPCS), Louisiana South Zone. Distance units in U.S. Survey Feet.
 Vertical Datum:
 Soundings are shown in feet and indicate depths below Low Water Reference Plane 2007 (NAVD).
 Distances on the Mississippi River, above and below Head of Passes are shown at 1 mile intervals.
 The location of navigation aids are base on and provided by the U.S. Coast Guard and USACE crew.
 2015 Aerial Photography data source: NAIP, USDA-FSA-APFO Aerial Photography Field Office.
 Reference is N.O.A. Navigation Chart No. 11370.
 ** Shoalest Sounding per Quarter per Reach.
 *** High frequency (200 kHz) survey data represents the first signal return at a sounding location and will include suspended solids, known as "fluff", if present. Low frequency (20 kHz) survey data normally penetrates through this "fluff" layer to depict elevations of consolidated bottom material. Low frequency accuracies may vary depending on channel conditions and fathometer settings.

Sheet Reference Number
 22 of 97