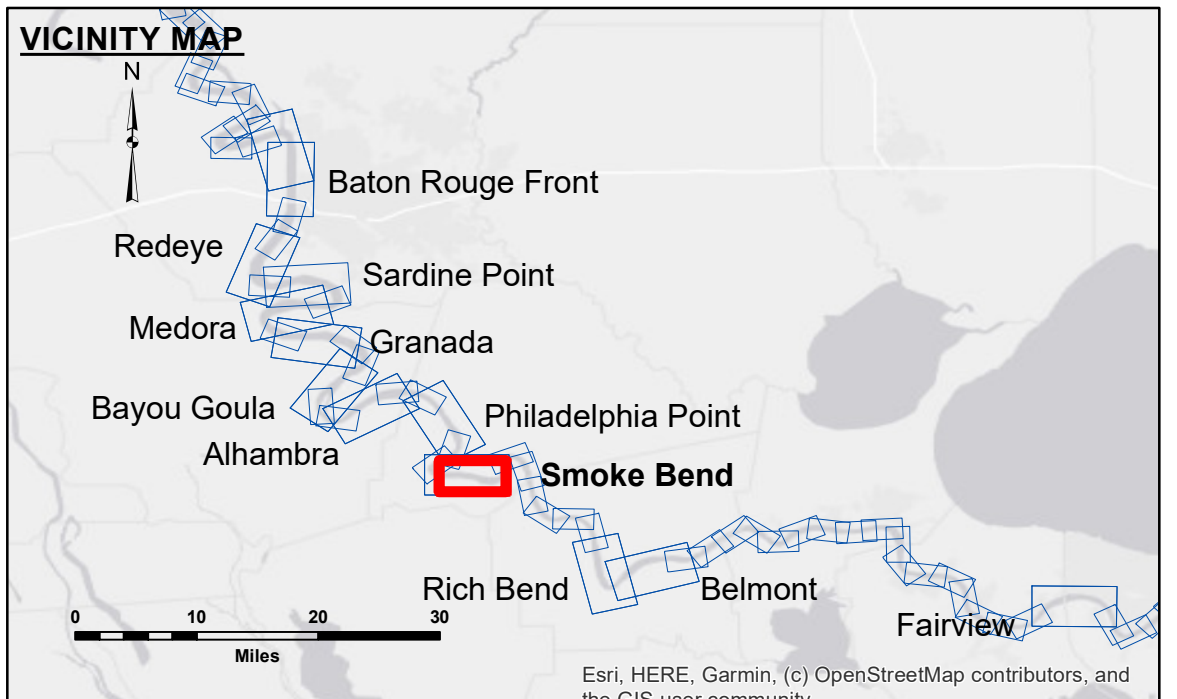


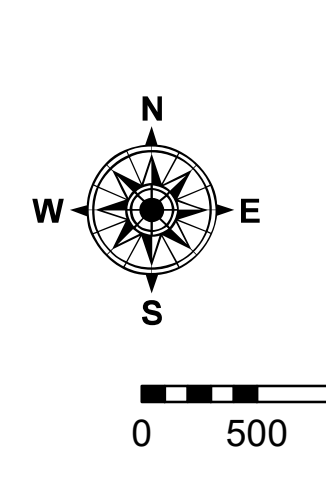
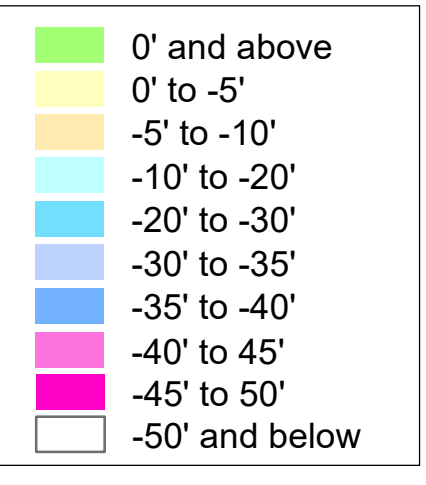
Access/Disclaimer: The United States Government makes these data and the recipient accepts and uses them with the express understanding that the data are provided for informational purposes only and are not intended for navigation, engineering, or other purposes. The user is responsible for the results of any use of the data. The Corps of Engineers does not warrant the accuracy, completeness, or reliability of the data for any purpose other than that intended. The information depicted on this map represents the results of a survey conducted by the Corps of Engineers and is not intended to be used for any purpose other than that intended. The Corps of Engineers does not warrant the accuracy, completeness, or reliability of the data for any purpose other than that intended.

Submitted:	Surveyed By: SP-JA
Recommended:	Plotted By: JH
Approved:	Checked By: JH

**MISSISSIPPI RIVER - B.R. TO GULF
SMOKE BEND CROSSING
MD_22_SMB_20220630_CS
30 June 2022**



LEGEND		
--- Federal Navigation Channel	○ Cable Area	□ Borrow Area
— Federal Navigation Center Line	■ Placement Area	● Shoalest Sounding**
— As-built Pipeline/Cable	□ Anchorage Area	★ Beacon, General
..... Unconfirmed Pipeline/Cable	⊗ Obstruction Point	◆ Red Navigation Buoy
— Project Depth Contour	✈ Wrecks-Submerged	◆ Green Navigation Buoy



LWRP: 1.4
Gage Reading: BR:17.6 D:10.0 USED: 10.1 NAVD
Sea Conditions: CALM
Vessel Name: M/V VALENTOUR
Survey Type: CONDITION
Sounding Frequency***: HIGH

NOTES:
Horizontal Coordinate System: North American Datum of 1983 (NAD83), projected to the State Plane Coordinate System (SPCS), Louisiana South Zone. Distance units in U.S. Survey Feet.
Vertical Datum: Soundings are shown in feet and indicate depths below Low Water Reference Plane 2007 (NAVD).
Distances on the Mississippi River, above and below Head of Passes are shown at 1 mile intervals.
The location of navigation aids are based on and provided by the U.S. Coast Guard and USACE crew.
2015 Aerial Photography data source: NAIP, USDA-FSA-APFO Aerial Photography Field Office.
Reference is N.O.A. Navigation Chart No. 11370.
** Shoalest Sounding per Quarter per Reach.
*** High frequency (200 kHz) survey data represents the first signal return at a sounding location and will include suspended solids, known as "fluff", if present. Low frequency (20 kHz) survey data normally penetrates through this "fluff" layer to depict elevations of consolidated bottom material. Low frequency accuracies may vary depending on channel conditions and fathometer settings.

**Sheet Reference Number
22 of 97**

Revision Number: 4.2-20200420