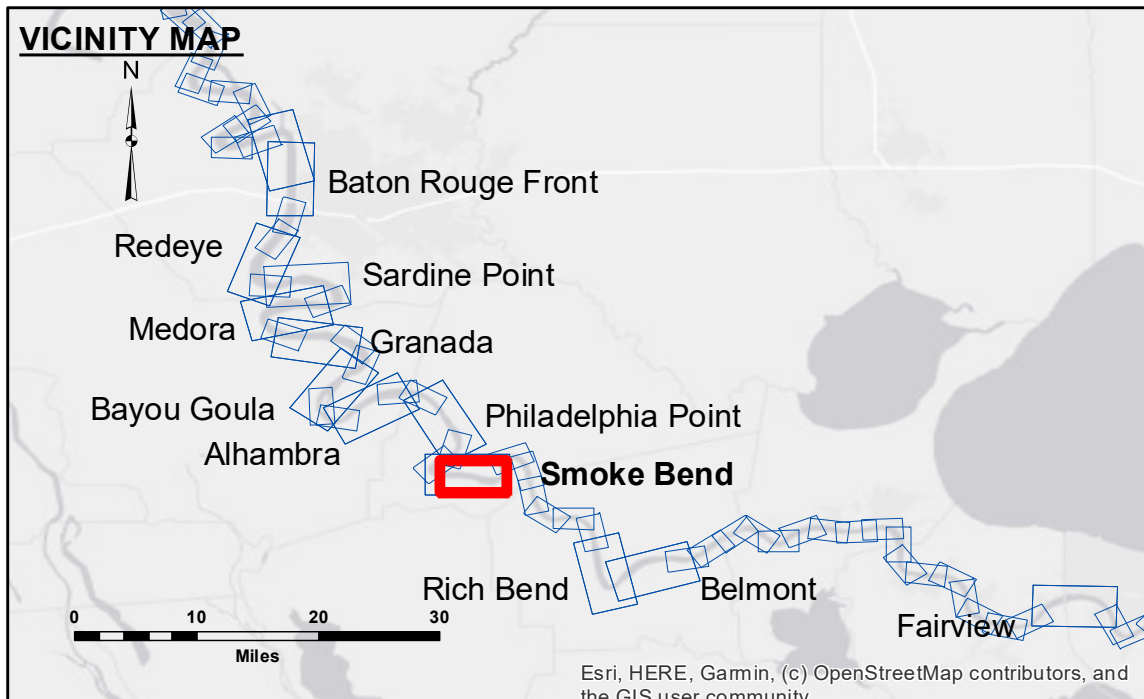


**DISCLAIMER**  
The United States Government furnishes these data and the recipient accepts and uses them with the express understanding that the data are provided for informational purposes only and are not intended for use in any other manner. The user is responsible for the results of any use of the data. The data are provided "as is" and the user assumes all responsibility for any errors or omissions. The data are provided for informational purposes only and are not intended for use in any other manner. The user is responsible for the results of any use of the data. The data are provided "as is" and the user assumes all responsibility for any errors or omissions.

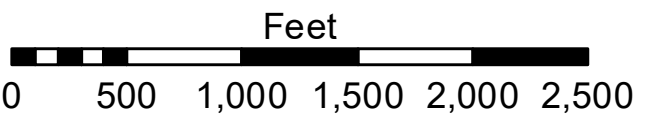
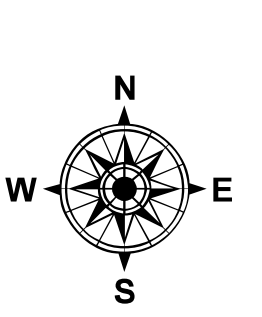
Submitted:	Surveyed By: SP/SR
Recommended: Chief, Survey Section	Plotted By: BD
Approved: Chief, Waterways Maintenance Section	Checked By: ADU/H

MISSISSIPPI RIVER - B.R. TO GULF  
SMOKE BEND CROSSING  
MD\_22\_SMB\_20221018\_CS  
18 October 2022



**LEGEND**

--- Federal Navigation Channel	○ Cable Area	□ Borrow Area	■ 0' and above
— Federal Navigation Center Line	▭ Placement Area	● Shoalest Sounding**	■ 0' to -5'
— As-built Pipeline/Cable	○ Anchorage Area	☆ Beacon, General	■ -5' to -10'
..... Unconfirmed Pipeline/Cable	⊗ Obstruction Point	♦ Red Navigation Buoy	■ -10' to -20'
— Project Depth Contour	⚓ Wrecks-Submerged	♦ Green Navigation Buoy	■ -20' to -30'
			■ -30' to -35'
			■ -35' to -40'
			■ -40' to -45'
			■ -45' to -50'
			■ -50' and below



LWRP: 1.4  
Gage Reading: BR:4.1 D:2.9 USED:2.9 NAVD  
Sea Conditions: CALM  
Vessel Name: MV TECHE  
Survey Type: CONDITION  
Sounding Frequency\*\*\*: HIGH

**NOTES:**  
Horizontal Coordinate System: North American Datum of 1983 (NAD83), projected to the State Plane Coordinate System (SPCS), Louisiana South Zone. Distance units in U.S. Survey Feet.  
Vertical Datum: Soundings are shown in feet and indicate depths below Low Water Reference Plane 2007 (NAVD).  
Distances on the Mississippi River, above and below Head of Passes are shown at 1 mile intervals.  
The location of navigation aids are based on and provided by the U.S. Coast Guard and USACE crew.  
2015 Aerial Photography data source: NAIP, USDA-FSA-APFO Aerial Photography Field Office.  
Reference is N.O.A.A. Navigation Chart No. 11370.  
\*\* Shoalest Sounding per Quarter per Reach.  
\*\*\* High frequency (200 kHz) survey data represents the first signal return at a sounding location and will include suspended solids, known as "fluff", if present. Low frequency (20 kHz) survey data normally penetrates through this "fluff" layer to depict elevations of consolidated bottom material. Low frequency accuracies may vary depending on channel conditions and fathometer settings.

Sheet Reference Number  
22 of 97

Revision Number: 4.2-202/064 20