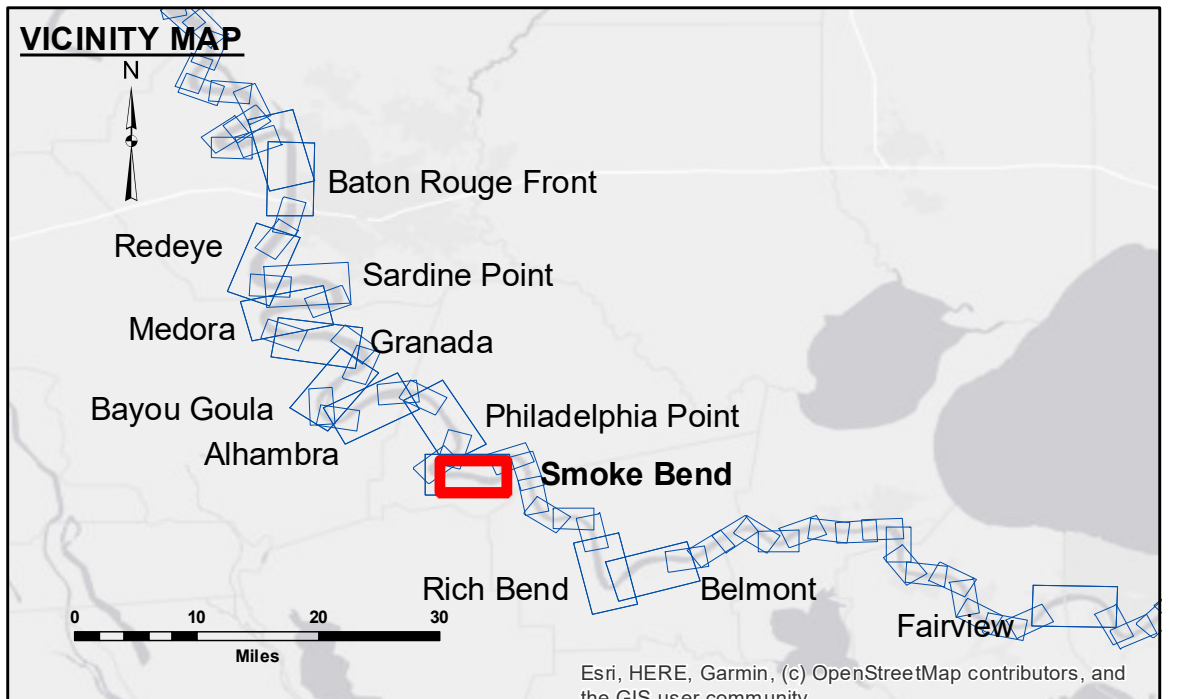


DISCLAIMER: The data represents the results of data collection processing for a specific US Army Corps of Engineers project. The data is not intended for use in any other application. The user is responsible for the results and accuracy of the data. The application of the data for other than its intended purpose is not warranted. Hydrographic survey data is subject to change due to several factors including but not limited to dredging, sedimentation, and channel migration. The user is responsible for the accuracy of the data and should verify the data for their intended use. The information depicted on this map represents the results of a survey conducted on the date of the survey. The user is responsible for the accuracy of the data and should verify the data for their intended use. The information depicted on this map represents the results of a survey conducted on the date of the survey. The user is responsible for the accuracy of the data and should verify the data for their intended use.

Submitted:	Surveyed By:
Recommended:	RYLAND/SIMMONS
Approved:	Plotted By:
	BD
	Checked By:
	AD/JH

MISSISSIPPI RIVER - B.R. TO GULF
SMOKE BEND CROSSING
MD_22_SMB_20230516_CS
16 May 2023



LEGEND

- Federal Navigation Channel
- Federal Navigation Center Line
- As-built Pipeline/Cable
- Unconfirmed Pipeline/Cable
- Project Depth Contour
- Cable Area
- Placement Area
- Anchorage Area
- ⊗ Obstruction Point
- ✂ Wrecks-Submerged
- Borrow Area
- Shoalest Sounding**
- ★ Beacon, General
- ◆ Red Navigation Buoy
- ◆ Green Navigation Buoy

Depth Legend:

- 0' and above
- 0' to -5'
- 5' to -10'
- 10' to -20'
- 20' to -30'
- 30' to -35'
- 35' to -40'
- 40' to -45'
- 45' to -50'
- 50' and below

NOTES:

Horizontal Coordinate System:
North American Datum of 1983 (NAD83), projected to the State Plane Coordinate System (SPCS), Louisiana South Zone. Distance units in U.S. Survey Feet.

Vertical Datum:
Soundings are shown in feet and indicate depths below Low Water Reference Plane 2007 (NAVD).

Distances on the Mississippi River, above and below Head of Passes are shown at 1 mile intervals.

The location of navigation aids are base on and provided by the U.S. Coast Guard and USACE crew.
2015 Aerial Photography data source: NAIP, USDA-FSA-APFO Aerial Photography Field Office.

Reference is N.O.A. Navigation Chart No. 11370.

** Shoalest Sounding per Quarter per Reach.

*** High frequency (200 kHz) survey data represents the first signal return at a sounding location and will include suspended solids, known as "fluff", if present. Low frequency (20 kHz) survey data normally penetrates through this "fluff" layer to depict elevations of consolidated bottom material. Low frequency accuracies may vary depending on channel conditions and fathometer settings.

LWRP: 1.4
Gage Reading: BR:23.0 D:14.3 USED:14.20 NAVD
Sea Conditions: CALM
Vessel Name: LAFORUCHE
Survey Type: CS
Sounding Frequency***: HIGH

Sheet Reference Number
22 of 97