



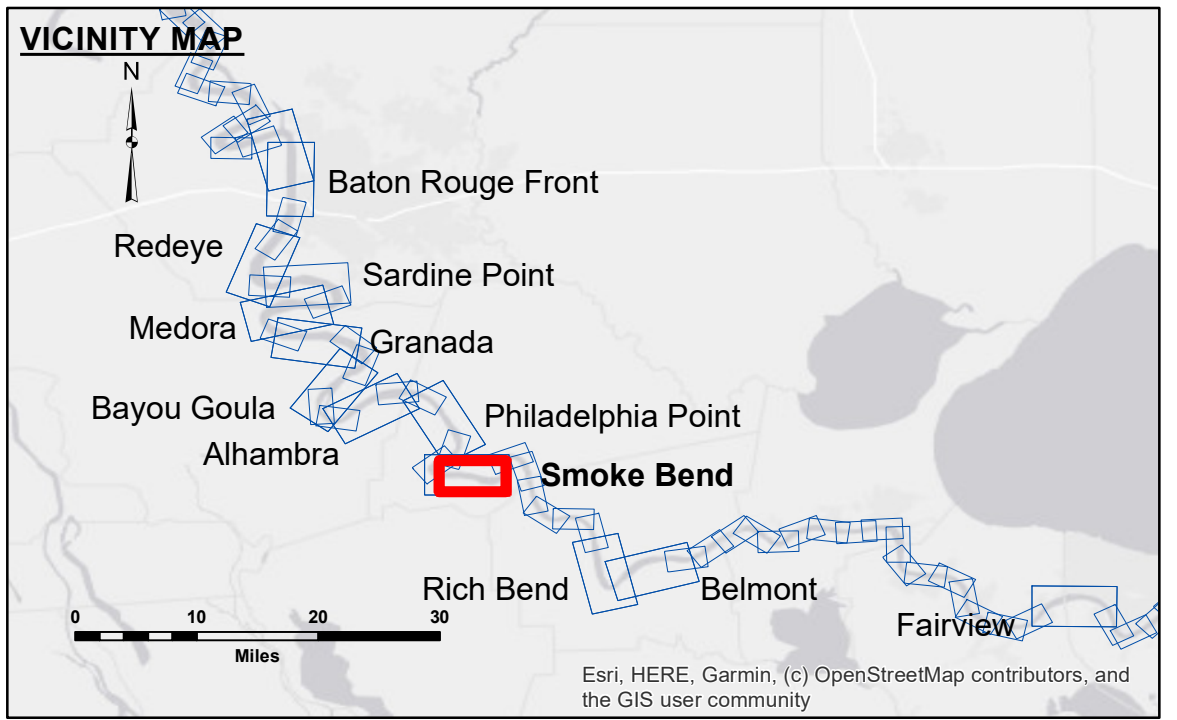
DISCLAIMER
 Access Conditions: The United States Government (USG) makes these data and the recipient accept and uses them with the express understanding that the USG does not warrant the accuracy, completeness, reliability, usability or suitability for any particular purpose of the information provided. The user is responsible for the results of any use of the information provided. The USG does not accept any liability for any damage or loss, whether direct or indirect, resulting from the use of the information provided. The USG does not accept any liability for any damage or loss, whether direct or indirect, resulting from the use of the information provided. The USG does not accept any liability for any damage or loss, whether direct or indirect, resulting from the use of the information provided.

Submitted:	Surveyed By:
Recommended:	RYLAND/SIMMONS
Approved:	Plotted By:
	JH
	Checked By:
	JH

MISSISSIPPI RIVER - B.R. TO GULF
SMOKE BEND CROSSING
MD_22_SMB_20240325_CS
25 March 2024

Sheet Reference Number
22 of 97

Revision Number:
 4.2-20240420



LEGEND

--- Federal Navigation Channel	○ Cable Area	□ Borrow Area	0' and above
— Federal Navigation Center Line	□ Placement Area	● Shoalest Sounding**	0' to -5'
— As-built Pipeline/Cable	□ Anchorage Area	★ Beacon, General	-5' to -10'
..... Unconfirmed Pipeline/Cable	⊗ Obstruction Point	◆ Red Navigation Buoy	-10' to -20'
— Project Depth Contour	✈ Wrecks-Submerged	◆ Green Navigation Buoy	-20' to -30'
			-30' to -35'
			-35' to -40'
			-40' to -45'
			-45' to -50'
			-50' and below

NOTES:

Horizontal Coordinate System:
 North American Datum of 1983 (NAD83), projected to the State Plane Coordinate System (SPCS), Louisiana South Zone. Distance units in U.S. Survey Feet.

Vertical Datum:
 Soundings are shown in feet and indicate depths below Low Water Reference Plane 2007 (NAVD).

Distances on the Mississippi River, above and below Head of Passes are shown at 1 mile intervals.

The location of navigation aids are base on and provided by the U.S. Coast Guard and USACE crew.

2015 Aerial Photography data source: NAIP, USDA-FSA-APFO Aerial Photography Field Office.

Reference is N.O.A. Navigation Chart No. 11370.

** Shoalest Sounding per Quarter per Reach.

*** High frequency (200 kHz) survey data represents the first signal return at a sounding location and will include suspended solids, known as "fluff", if present. Low frequency (20 kHz) survey data normally penetrates through this "fluff" layer to depict elevations of consolidated bottom material. Low frequency accuracies may vary depending on channel conditions and fathometer settings.

LWRP: 1.4
 Gage Reading: BR:24.0 D:15.5 USED: 15.60 NAVD88
 Sea Conditions: CALM
 Vessel Name: LAFOURCHE
 Survey Type: CS
 Sounding Frequency***: HIGH

Feet
 0 500 1,000 1,500 2,000 2,500

Revision Number:
 4.2-20240420