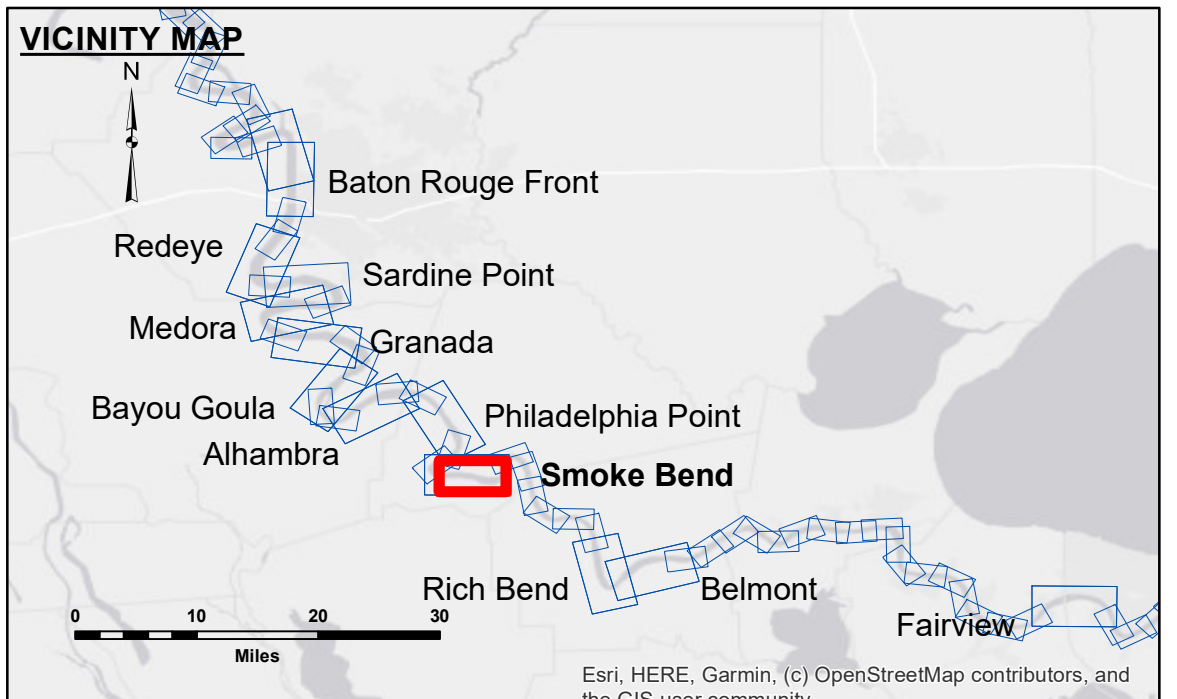


**DISCLAIMER**  
 The information depicted on this map represents the results of a survey conducted by the United States Army Corps of Engineers. The data represents the results of a survey conducted for a specific purpose and is only valid for that purpose. The user is responsible for the accuracy, completeness, and reliability of the data for any other use. The user is responsible for the accuracy, completeness, and reliability of the data for any other use. The user is responsible for the accuracy, completeness, and reliability of the data for any other use.

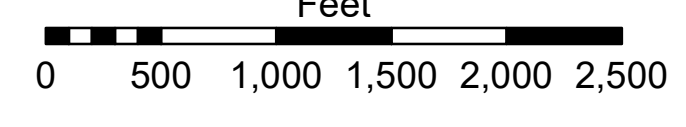
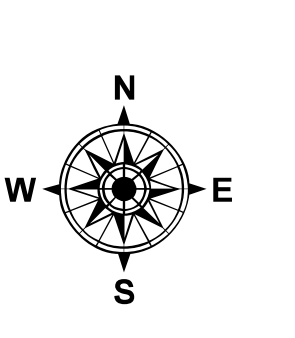
Submitted	Surveyed By: ADAMS/CHAMPINE
Recommended	Plotted By: BD
Approved	Checked By: AOJ/H

U.S. ARMY CORPS OF ENGINEERS  
 NEW ORLEANS DISTRICT

**MISSISSIPPI RIVER - B.R. TO GULF  
 SMOKE BEND CROSSING  
 MD\_22\_SMB\_20240412\_CS  
 12 April 2024**



LEGEND		
--- Federal Navigation Channel	○ Cable Area	□ Borrow Area
— Federal Navigation Center Line	■ Placement Area	● Shoalest Sounding**
— As-built Pipeline/Cable	□ Anchorage Area	★ Beacon, General
..... Unconfirmed Pipeline/Cable	⊗ Obstruction Point	◆ Red Navigation Buoy
— Project Depth Contour	✈ Wrecks-Submerged	◆ Green Navigation Buoy



LWRP: 1.4  
 Gage Reading: BR:21.8 D:12.1 USED:12.2 NAVD88  
 Sea Conditions: CALM  
 Vessel Name: M/V VALENTOUR  
 Survey Type: CONDITION  
 Sounding Frequency\*\*\*: LOW

**NOTES:**  
 Horizontal Coordinate System:  
 North American Datum of 1983 (NAD83), projected to the State Plane Coordinate System (SPCS), Louisiana South Zone. Distance units in U.S. Survey Feet.  
 Vertical Datum:  
 Soundings are shown in feet and indicate depths below Low Water Reference Plane 2007 (NAVD).  
 Distances on the Mississippi River, above and below Head of Passes are shown at 1 mile intervals.  
 The location of navigation aids are base on and provided by the U.S. Coast Guard and USACE crew.  
 2015 Aerial Photography data source: NAIP, USDA-FSA-APFO Aerial Photography Field Office.  
 Reference is N.O.A. Navigation Chart No. 11370.  
 \*\* Shoalest Sounding per Quarter per Reach.  
 \*\*\* High frequency (200 kHz) survey data represents the first signal return at a sounding location and will include suspended solids, known as "fluff", if present. Low frequency (20 kHz) survey data normally penetrates through this "fluff" layer to depict elevations of consolidated bottom material. Low frequency accuracies may vary depending on channel conditions and fathometer settings.

**Sheet Reference Number  
 22 of 97**