

Access Constraints: The United States Government furnishes these data and the recipient accepts and uses them with the express understanding that they are not to be used for any purpose other than that for which they were prepared, and that the user is responsible for the results of their use. The user is responsible for the results of their use. The user is responsible for the results of their use. The user is responsible for the results of their use.

Distribution Liability: The data represents the results of data collection/processing for a specific US Army Corps of Engineers project. It is only valid for its intended use, content, time and accuracy specifications. The user is responsible for the results of their use. The user is responsible for the results of their use. The user is responsible for the results of their use.

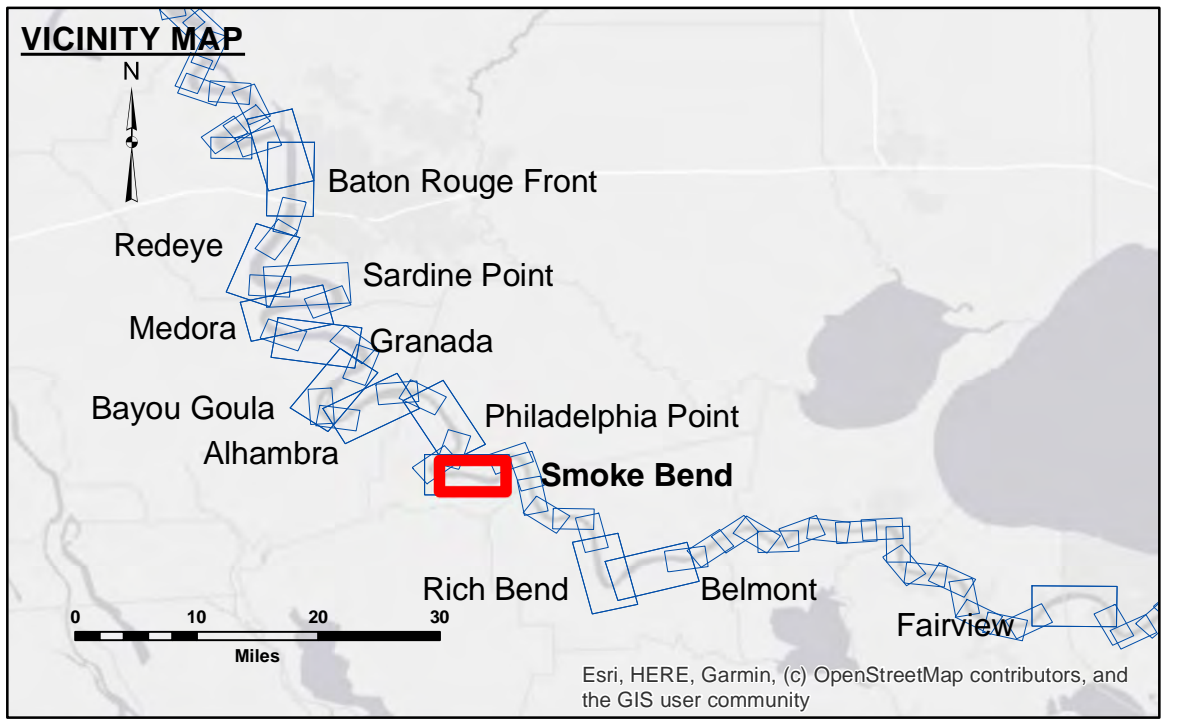
Data Accuracy: Hydrographic survey data is subject to change due to several factors including but not limited to changing hydrographic conditions which develop after the time of the survey. The user is responsible for the results of their use. The user is responsible for the results of their use. The user is responsible for the results of their use.

Submitted:	Surveyed By:
Recommended:	R/LAND/SIMMONS
Approved:	Plotted By:
	BD
	Checked By:
	ADJH

MISSISSIPPI RIVER - B.R. TO GULF
 SMOKE BEND CROSSING
 MD_22_SMB_20240729_CS
 29 July 2024

Sheet Reference Number
 22 of 97

Revision Number:
 4.2-20240620



LEGEND

--- Federal Navigation Channel	○ Cable Area	□ Borrow Area	■ 0' and above
— Federal Navigation Center Line	□ Placement Area	● Shoalest Sounding**	■ 0' to -5'
— As-built Pipeline/Cable	□ Anchorage Area	★ Beacon, General	■ -5' to -10'
..... Unconfirmed Pipeline/Cable	⊗ Obstruction Point	◆ Red Navigation Buoy	■ -10' to -20'
— Project Depth Contour	⚓ Wrecks-Submerged	◆ Green Navigation Buoy	■ -20' to -30'
			■ -30' to -35'
			■ -35' to -40'
			■ -40' to 45'
			■ -45' to 50'
			■ -50' and below

NOTES:

Horizontal Coordinate System:
 North American Datum of 1983 (NAD83), projected to the State Plane Coordinate System (SPCS), Louisiana South Zone. Distance units in U.S. Survey Feet.

Vertical Datum:
 Soundings are shown in feet and indicate depths below Low Water Reference Plane 2007 (NAVD).

Distances on the Mississippi River, above and below Head of Passes are shown at 1 mile intervals.

The location of navigation aids are base on and provided by the U.S. Coast Guard and USACE crew.
 2015 Aerial Photography data source: NAIP, USDA-FSA-APFO Aerial Photography Field Office.

Reference is N.O.A.A. Navigation Chart No. 11370.

** Shoalest Sounding per Quarter per Reach.

*** High frequency (200 kHz) survey data represents the first signal return at a sounding location and will include suspended solids, known as "fluff", if present. Low frequency (20 kHz) survey data normally penetrates through this "fluff" layer to depict elevations of consolidated bottom material. Low frequency accuracies may vary depending on channel conditions and fathometer settings.

LWRP: 1.4
 Gage Reading: BR:19.9 D:11.8 USED:11.90 NAVD
 Sea Conditions: CALM
 Vessel Name: OB-189
 Survey Type: CS
 Sounding Frequency***: HIGH

Scale: 0 500 1,000 1,500 2,000 2,500 Feet