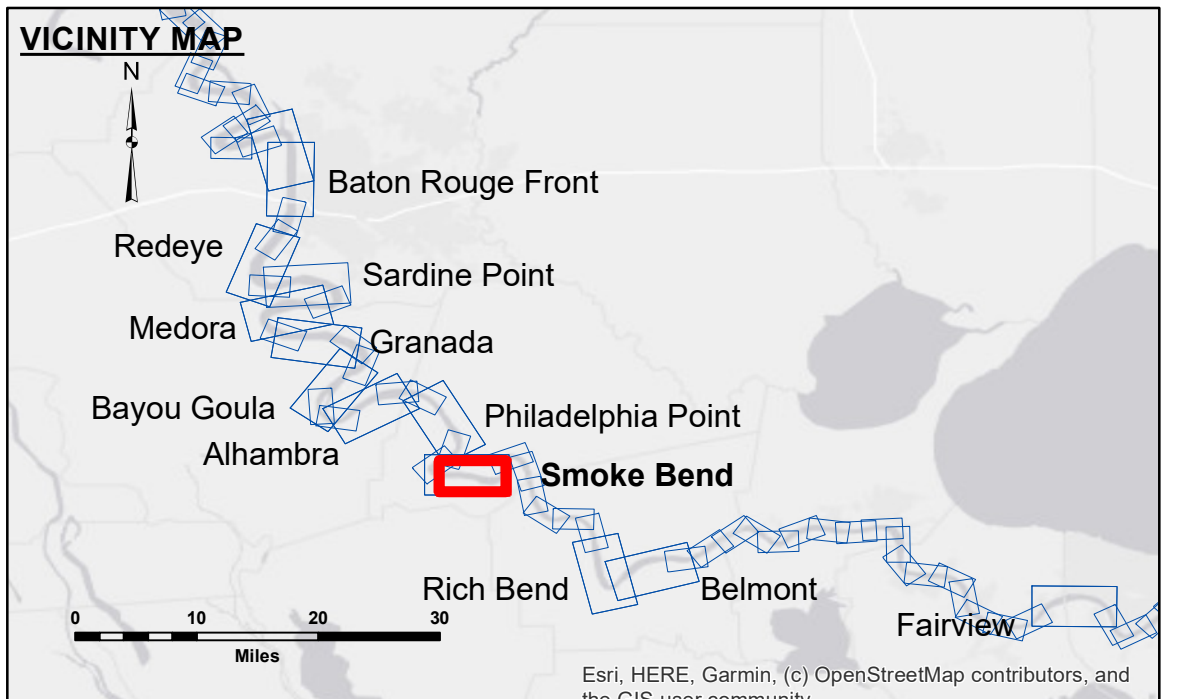


Access/Obstruction: The United States Government (USG) makes these data and the recipient accept and uses them with the express understanding that the USG does not warrant the accuracy, completeness, reliability, usability or suitability for any particular purpose of the information provided. The user is responsible for the results of any use of the information provided, including the application of the data for other than its intended purpose.

Data: Constant Hydrographic Survey data is subject to change rapidly due to several factors including, but not limited to, changing hydrographic conditions, changes in channel conditions, and changes in the hydrographic conditions which develop after the date of the survey. The USG does not warrant the accuracy of the information depicted on this map represents the results of a survey conducted on the date of the survey. The USG does not consider the information to represent the general condition existing at that time.

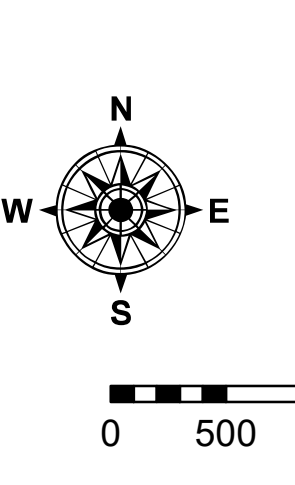
Submitted:	Surveyed By:
Recommended:	RYLAND/SIMMONS
Approved:	Plotted By:
Chief, Survey Section	JH
Chief, Waterways Maintenance Section	Checked By:
	JH

**MISSISSIPPI RIVER - B.R. TO GULF
SMOKE BEND CROSSING
MD_22_SMB_20240812_CS
12 August 2024**



LEGEND

--- Federal Navigation Channel	○ Cable Area	□ Borrow Area	0' and above
— Federal Navigation Center Line	□ Placement Area	● Shoalest Sounding**	0' to -5'
— As-built Pipeline/Cable	□ Anchorage Area	★ Beacon, General	-5' to -10'
..... Unconfirmed Pipeline/Cable	⊗ Obstruction Point	◆ Red Navigation Buoy	-10' to -20'
— Project Depth Contour	⚓ Wrecks-Submerged	◆ Green Navigation Buoy	-20' to -30'
			-30' to -35'
			-35' to -40'
			-40' to -45'
			-45' to -50'
			-50' and below



LWRP: 1.4
 Gage Reading: BR:12.1 D:6.5 USED:6.60 NAVD88
 Sea Conditions: CALM
 Vessel Name: OB 189
 Survey Type: CS
 Sounding Frequency***: HIGH

NOTES:

Horizontal Coordinate System:
 North American Datum of 1983 (NAD83), projected to the State Plane Coordinate System (SPCS), Louisiana South Zone. Distance units in U.S. Survey Feet.

Vertical Datum:
 Soundings are shown in feet and indicate depths below Low Water Reference Plane 2007 (NAVD).

Distances on the Mississippi River, above and below Head of Passes are shown at 1 mile intervals.

The location of navigation aids are based on and provided by the U.S. Coast Guard and USACE crew.

2015 Aerial Photography data source: NAIP, USDA-FSA-APFO Aerial Photography Field Office.

Reference is N.O.A. Navigation Chart No. 11370.

** Shoalest Sounding per Quarter per Reach.

*** High frequency (200 kHz) survey data represents the first signal return at a sounding location and will include suspended solids, known as "fluff", if present. Low frequency (20 kHz) survey data normally penetrates through this "fluff" layer to depict elevations of consolidated bottom material. Low frequency accuracies may vary depending on channel conditions and fathometer settings.

**Sheet Reference Number
22 of 97**