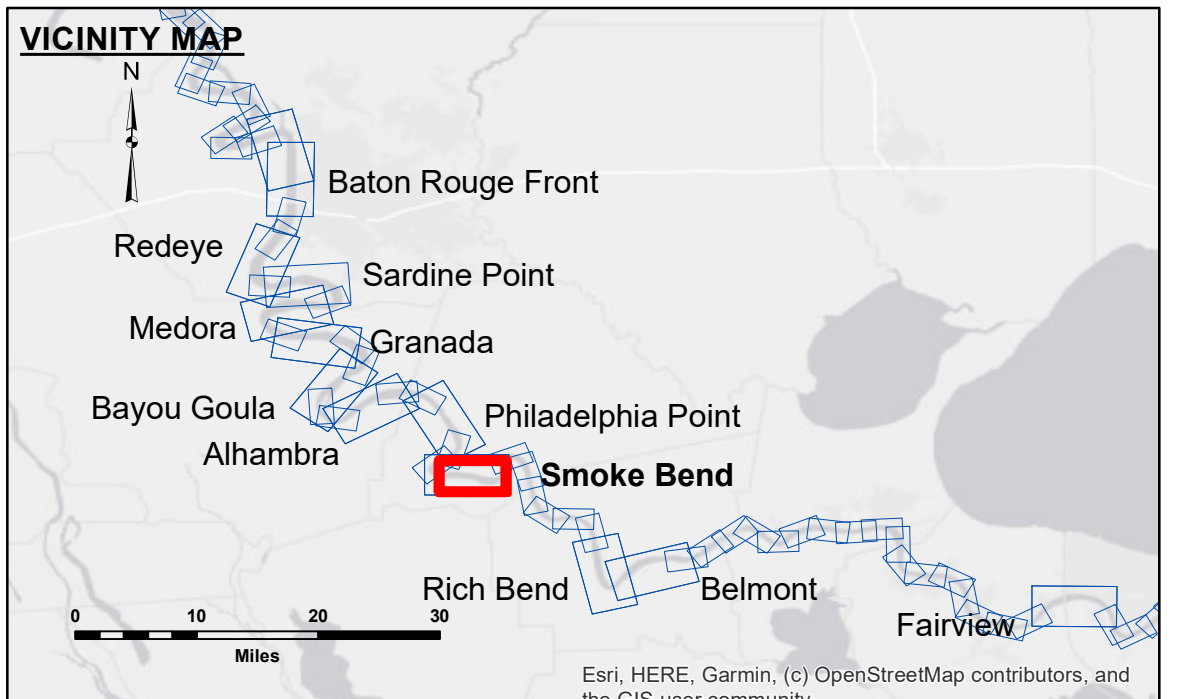


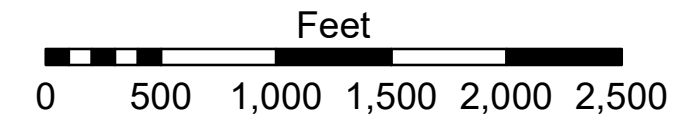
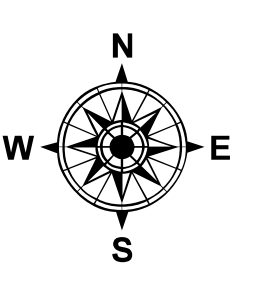
Accession: The United States Government (USACE) makes these data and the recipient accepts and uses them with the express understanding that the data are not to be used for any purpose other than that for which they were originally collected, and that the USACE is not responsible for any errors, omissions, or inaccuracies in the data. The user is responsible for the accuracy, completeness, and reliability of the data for their intended use. The data are provided as a courtesy and are not to be used for any purpose other than that for which they were originally collected. The user is responsible for the accuracy, completeness, and reliability of the data for their intended use. The data are provided as a courtesy and are not to be used for any purpose other than that for which they were originally collected. The user is responsible for the accuracy, completeness, and reliability of the data for their intended use.

Submitted:	Surveyed By:
Recommended:	RYLAND/SIMMONS
Approved:	Plotted By:
	JH
	Checked By:
	JH

**MISSISSIPPI RIVER - B.R. TO GULF
SMOKE BEND CROSSING
MD_22_SMB_20241021_CS
21 October 2024**



LEGEND		
--- Federal Navigation Channel	○ Cable Area	□ Borrow Area
— Federal Navigation Center Line	▭ Placement Area	● Shoalest Sounding**
— As-built Pipeline/Cable	⊗ Anchorage Area	★ Beacon, General
⋯ Unconfirmed Pipeline/Cable	⊗ Obstruction Point	◆ Red Navigation Buoy
— Project Depth Contour	✈ Wrecks-Submerged	◆ Green Navigation Buoy
		0' and above
		0' to -5'
		-5' to -10'
		-10' to -20'
		-20' to -30'
		-30' to -35'
		-35' to -40'
		-40' to -45'
		-45' to -50'
		-50' and below



LWRP: 1.4
Gage Reading: BR:5.2 D:2.7 USED: 2.70 NAVD88
Sea Conditions: CALM
Vessel Name: LAFOURCHE
Survey Type: CS
Sounding Frequency***: HIGH

NOTES:
Horizontal Coordinate System: North American Datum of 1983 (NAD83), projected to the State Plane Coordinate System (SPCS), Louisiana South Zone. Distance units in U.S. Survey Feet.
Vertical Datum: Soundings are shown in feet and indicate depths below Low Water Reference Plane 2007 (NAVD).
Distances on the Mississippi River, above and below Head of Passes are shown at 1 mile intervals.
The location of navigation aids are based on and provided by the U.S. Coast Guard and USACE crew.
2015 Aerial Photography data source: NAIP, USDA-FSA-APFO Aerial Photography Field Office.
Reference is N.O.A. Navigation Chart No. 11370.
** Shoalest Sounding per Quarter per Reach.
*** High frequency (200 kHz) survey data represents the first signal return at a sounding location and will include suspended solids, known as "fluff", if present. Low frequency (20 kHz) survey data normally penetrates through this "fluff" layer to depict elevations of consolidated bottom material. Low frequency accuracies may vary depending on channel conditions and fathometer settings.

**Sheet Reference Number
22 of 97**