

**Access/Obstruction:** The United States Government (USG) makes these data and the recipient accept and uses them with the express understanding that the USG does not warrant, either explicitly or implied, the accuracy, completeness, reliability, usability or suitability for any particular purpose of the data. The user is responsible for the results of the use of the data for other than its intended purpose.

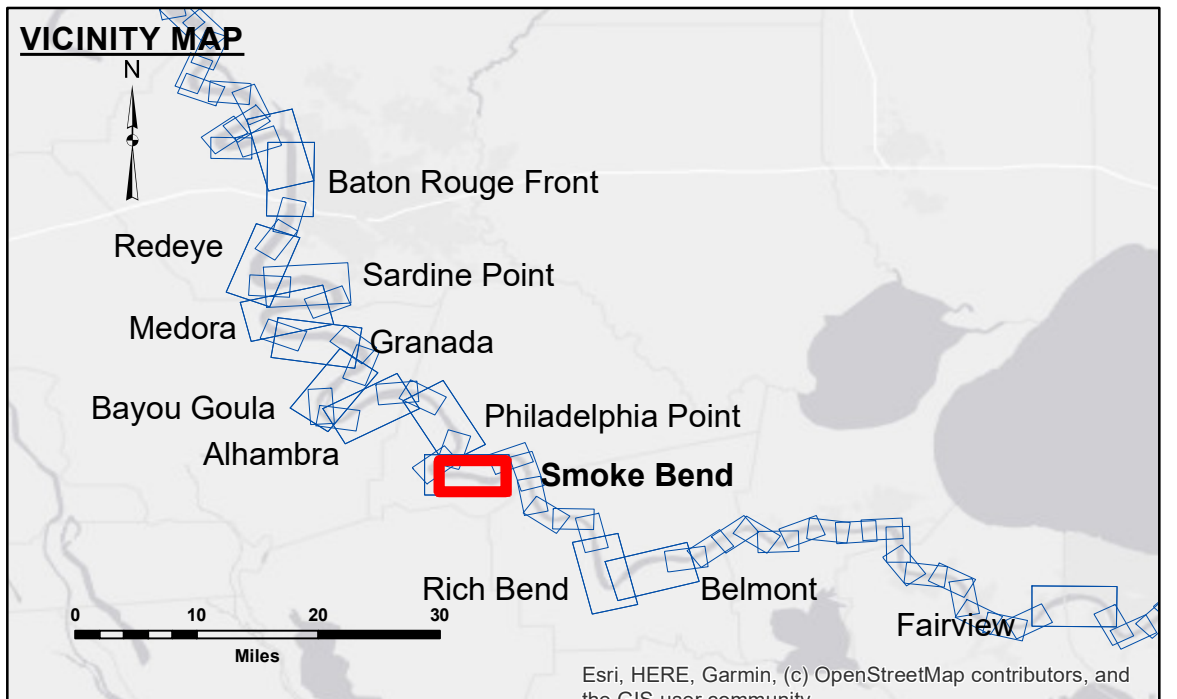
**Data:** Constant Hydrographic survey data is subject to change rapidly due to several factors including, but not limited to, changing hydrographic conditions, changes in the bathymetry of the river, and changes in the hydrographic conditions which develop after the date of the survey. The USG does not warrant, either explicitly or implied, the accuracy, completeness, reliability, usability or suitability for any particular purpose of the data. The user is responsible for the results of the use of the data for other than its intended purpose.

**Disclaimer:** The information depicted on this map represents the results of a survey conducted by the US Army Corps of Engineers. It is not intended to be used for any purpose other than that for which it was prepared. The USG does not warrant, either explicitly or implied, the accuracy, completeness, reliability, usability or suitability for any particular purpose of the data. The user is responsible for the results of the use of the data for other than its intended purpose.

Submitted:	Surveyed By:	R/LAND/SIMMONS
Recommended:	Plotted By:	JH
Approved:	Checked By:	JH

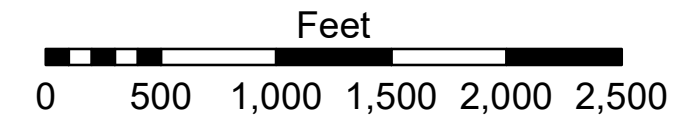
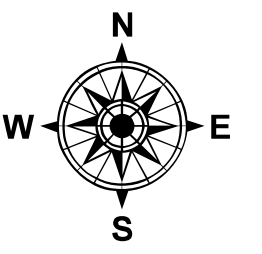
U.S. ARMY CORPS OF ENGINEERS  
NEW ORLEANS DISTRICT

**MISSISSIPPI RIVER - B.R. TO GULF  
SMOKE BEND CROSSING  
MD\_22\_SMB\_20241203\_CS  
03 December 2024**



**LEGEND**

--- Federal Navigation Channel	○ Cable Area	□ Borrow Area	0' and above
— Federal Navigation Center Line	□ Placement Area	● Shoalest Sounding**	0' to -5'
— As-built Pipeline/Cable	□ Anchorage Area	★ Beacon, General	-5' to -10'
..... Unconfirmed Pipeline/Cable	⊗ Obstruction Point	◆ Red Navigation Buoy	-10' to -20'
— Project Depth Contour	⚓ Wrecks-Submerged	◆ Green Navigation Buoy	-20' to -30'
			-30' to -35'
			-35' to -40'
			-40' to -45'
			-45' to -50'
			-50' and below



LWRP: 1.4  
Gage Reading: BR:8.9 D:4.2 USED:4.30 NAVD88  
Sea Conditions: CALM  
Vessel Name: LAFOURCHE  
Survey Type: CS  
Sounding Frequency\*\*\*: HIGH

**NOTES:**

Horizontal Coordinate System:  
North American Datum of 1983 (NAD83), projected to the State Plane Coordinate System (SPCS), Louisiana South Zone. Distance units in U.S. Survey Feet.

Vertical Datum:  
Soundings are shown in feet and indicate depths below Low Water Reference Plane 2007 (NAVD).

Distances on the Mississippi River, above and below Head of Passes are shown at 1 mile intervals.

The location of navigation aids are based on and provided by the U.S. Coast Guard and USACE crew.

2015 Aerial Photography data source: NAIP, USDA-FSA-APFO Aerial Photography Field Office.

Reference is N.O.A. Navigation Chart No. 11370.

\*\* Shoalest Sounding per Quarter per Reach.

\*\*\* High frequency (200 kHz) survey data represents the first signal return at a sounding location and will include suspended solids, known as "fluff", if present. Low frequency (20 kHz) survey data normally penetrates through this "fluff" layer to depict elevations of consolidated bottom material. Low frequency accuracies may vary depending on channel conditions and fathometer settings.

**Sheet Reference Number  
22 of 97**