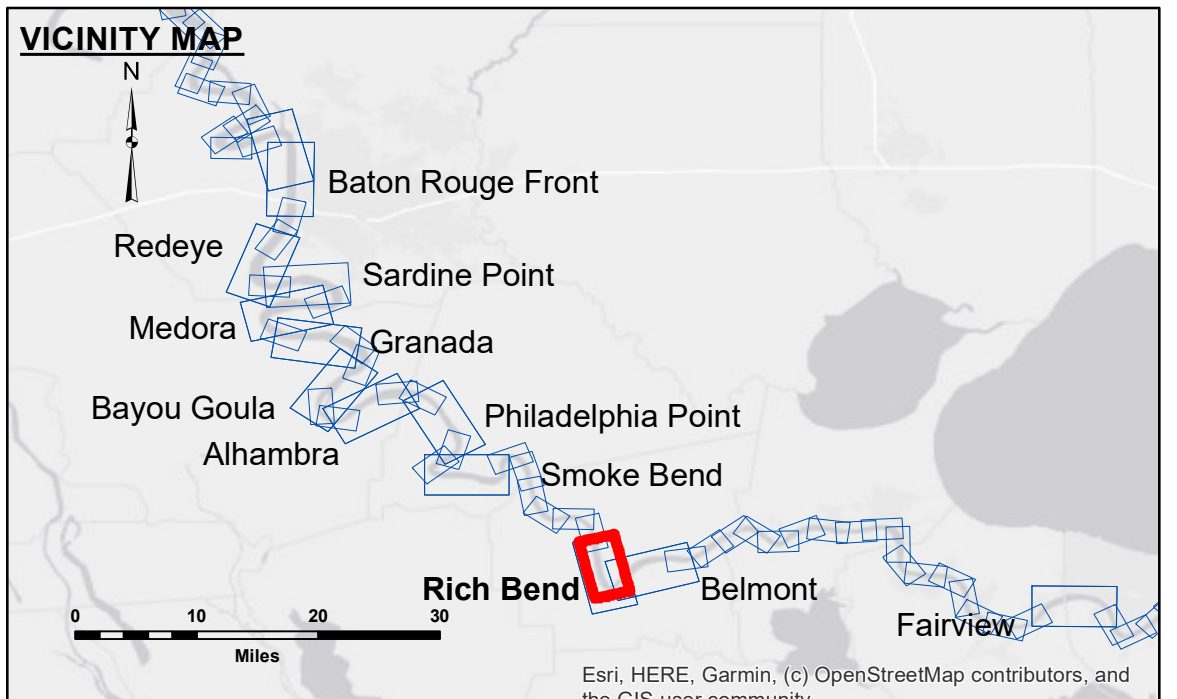


Access Conditions: The United States Government makes these data and the recipient accepts and uses them with the express understanding that they are not to be used for any purpose other than that for which they were prepared, and that the user is responsible for the results of any use of these data. The user is responsible for the results of any use of these data. The user is responsible for the results of any use of these data. The user is responsible for the results of any use of these data.

Submitted:	Checked By:
Reviewed:	Checked By:
Approved:	Checked By:

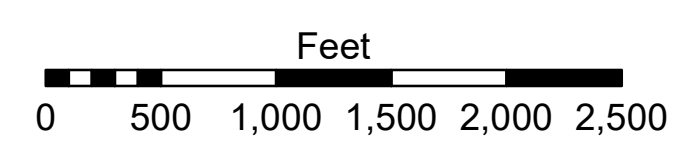
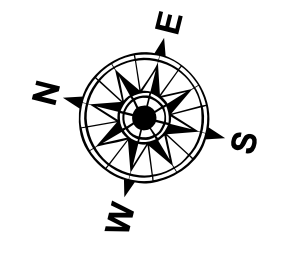
MISSISSIPPI RIVER - B. R. TO GULF
RICH BEND CROSSING
MD_29_RIB_20190729_CS
29 July 2019

Sheet Reference Number
29 of 97



LEGEND	
--- Federal Navigation Channel	● Cable Area
— Federal Navigation Center Line	■ Placement Area
— As-built Pipeline/Cable	□ Anchorage Area
..... Unconfirmed Pipeline/Cable	⊗ Obstruction Point
— Project Depth Contour	★ Beacons-General
	◆ Red Navigation Buoy
	◆ Green Navigation Buoy
	■ Borrow Area
	● Shoalest Sounding**
	◆ Wrecks-Submerged

0' and above	0' to -5'
-5' to -10'	-10' to -20'
-20' to -30'	-30' to -35'
-35' to -40'	-40' to -45'
-45' and below	



LWRP: 1.2
 Gage Reading: D:25.9R:19.7 USED:23.1 NAVD
 Sea Conditions: SMOOTH
 Vessel Name: LAFOURCHE
 Survey Type: CS
 Sounding Frequency***: HIGH

NOTES:
 Horizontal Coordinate System:
 North American Datum of 1983 (NAD83), projected to the State Plane Coordinate System (SPCS), Louisiana South Zone. Distance units in U.S. Survey Feet.
 Vertical Datum:
 Soundings are shown in feet and indicate depths below Low Water Reference Plane 2007 (NAVD).
 Distances on the Mississippi River, above and below Head of Passes are shown at 1 mile intervals.
 The location of navigation aids are based on and provided by the U.S. Coast Guard and USACE crew.
 2010 Aerial Photography data source: NAIP, USDA-FSA-APFO Aerial Photography Field Office.
 Reference is N.O.A. Navigation Chart No. 11370.
 ** Shoalest Sounding per Quarter per Reach.
 *** High frequency (200 kHz) survey data represents the first signal return at a sounding location and will include suspended solids, known as "fluff", if present. Low frequency (20 kHz) survey data normally penetrates through this "fluff" layer to depict elevations of consolidated bottom material. Low frequency accuracies may vary depending on channel conditions and fathometer settings.