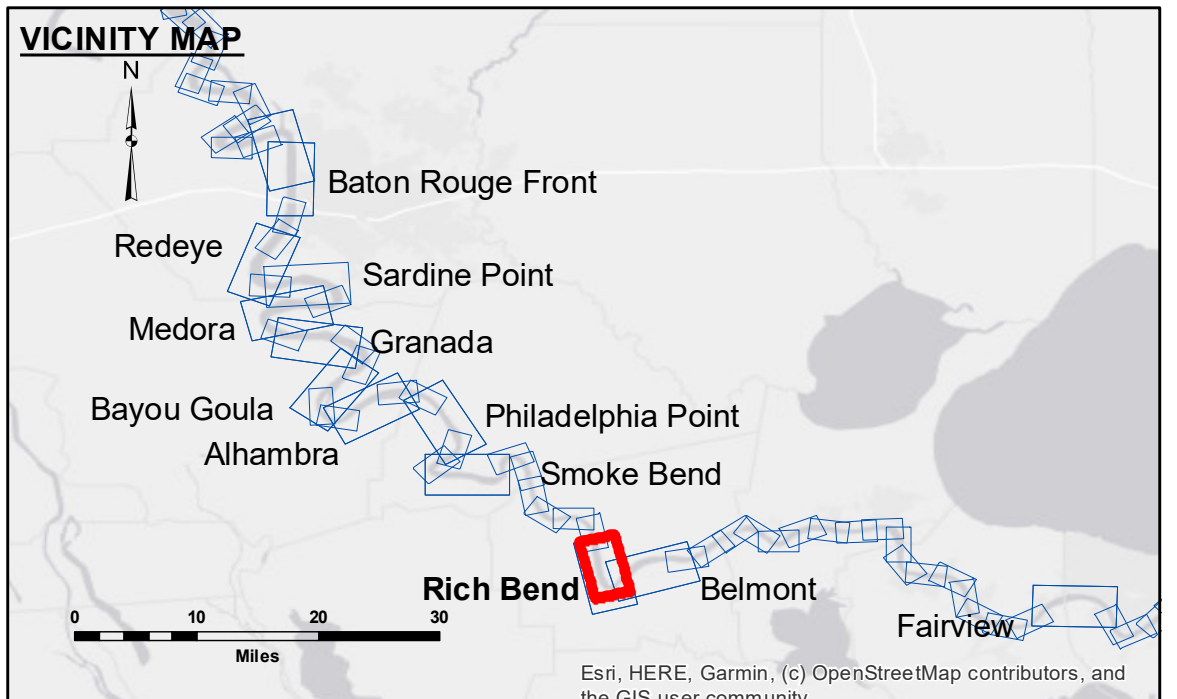


DISCLAIMER: The United States Government furnishes these data and the recipient accepts and uses them with the express understanding that the Government makes no warranty, expressed or implied, as to the accuracy, completeness, reliability, usability or suitability for any particular purpose of the data. The user is responsible for the results obtained from the application of the data for other than its intended purpose. Data contained in hydrographic survey data is subject to change due to several factors including but not limited to dredging, sedimentation, and other factors. The user is responsible for the accuracy of the data. The information depicted on this map represents the results of a survey conducted on the date indicated. The information is considered to represent the general condition existing at that time.

U.S. ARMY CORPS OF ENGINEERS NEW ORLEANS DISTRICT		
Submitted:	Surveyed By:	PMS/SPS
Recommended:	Plotted By:	BD
Approved:	Checked By:	AC

**MISSISSIPPI RIVER - B.R. TO GULF
RICH BEND CROSSING
MD_29_RIB_20191030_CS
30 October 2019**



LEGEND			
--- Federal Navigation Channel	○ Cable Area	□ Borrow Area	0' and above
— Federal Navigation Center Line	■ Placement Area	● Shoalest Sounding**	0' to -5'
— As-built Pipeline/Cable	□ Anchorage Area	☆ Beacon, General	-5' to -10'
..... Unconfirmed Pipeline/Cable	⊗ Obstruction Point	◆ Red Navigation Buoy	-10' to -20'
— Project Depth Contour	⚓ Wrecks-Submerged	◆ Green Navigation Buoy	-20' to -30'
			-30' to -35'
			-35' to -40'
			-40' to -45'
			-45' and below

Notes:
 Horizontal Coordinate System:
 North American Datum of 1983 (NAD83), projected to the State Plane
 Coordinate System (SPCS), Louisiana South Zone. Distance units in U.S. Survey Feet.
 Vertical Datum:
 Soundings are shown in feet and indicate depths below Low Water Reference Plane 2007 (NAVD).
 Distances on the Mississippi River, above and below Head of Passes are shown
 at 1 mile intervals.
 The location of navigation aids are base on and provided by the U.S. Coast Guard and USACE crew.
 2010 Aerial Photography data source: NAIP, USDA-FSA-APFO Aerial Photography Field Office.
 Reference is N.O.A. Navigation Chart No. 11370.
 ** Shoalest Sounding per Quarter per Reach.
 *** High frequency (200 kHz) survey data represents the first signal return at a sounding
 location and will include suspended solids, known as "fluff", if present. Low frequency (20 kHz)
 survey data normally penetrates through this "fluff" layer to depict elevations of consolidated bottom
 material. Low frequency accuracies may vary depending on channel conditions and fathometer
 settings.

LWRP: 1.2
 Gage Reading: D:14.5 R:10.9 USED:12.8 NAVD
 Sea Conditions: CALM
 Vessel Name: OB-167
 Survey Type: CONDITION
 Sounding Frequency***: HIGH

Feet
 0 500 1,000 1,500 2,000 2,500

**Sheet
Reference
Number
29 of 97**