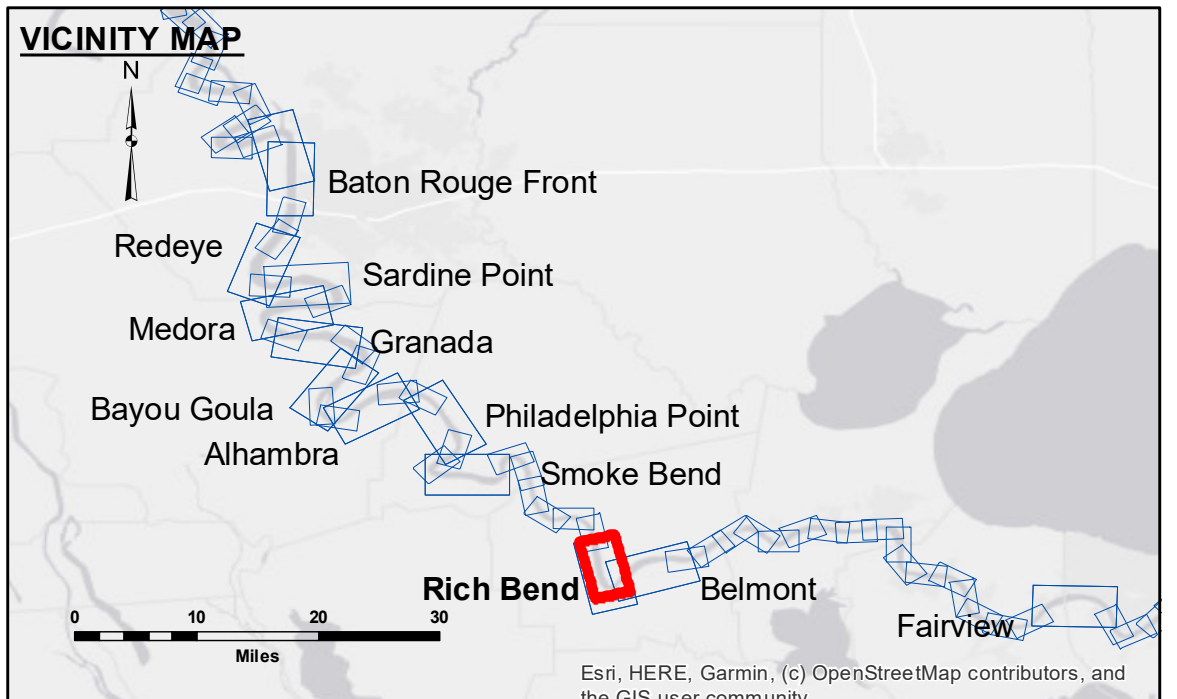




DISCLAIMER: The United States Government furnishes these data and the recipient accepts and uses them with the express understanding that the data are not to be used for any purpose other than that for which they were provided. The user is responsible for the results of any use of the data. The application of the data for other than its intended purpose is not warranted. Hydrographic survey data is subject to change due to several factors including but not limited to dredging, shifting sandbars, and other natural processes. The user is responsible for the results of any use of the data. The application of the data for other than its intended purpose is not warranted. The information depicted on this map represents the results of a survey conducted on the date of the survey. The user is responsible for the results of any use of the data. The application of the data for other than its intended purpose is not warranted.

U.S. ARMY CORPS OF ENGINEERS NEW ORLEANS DISTRICT		
Submitted:	Surveyed By:	Ryland Adams
Recommended:	Plotted By:	BD
Approved:	Checked By:	AC
Sheet: Waterways Maintenance Section		

**MISSISSIPPI RIVER - B.R. TO GULF
RICH BEND CROSSING
MD_29_RIB_20200708_CS
08 July 2020**

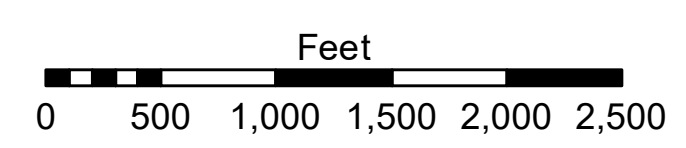
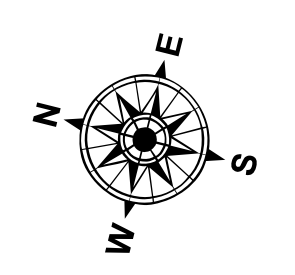


LEGEND

- Federal Navigation Channel
- Federal Navigation Center Line
- As-built Pipeline/Cable
- Unconfirmed Pipeline/Cable
- Project Depth Contour
- Cable Area
- Placement Area
- Anchorage Area
- Obstruction Point
- Wrecks-Submerged
- Borrow Area
- Shoalest Sounding**
- Beacon, General
- Red Navigation Buoy
- Green Navigation Buoy

DEPTH SCALE

- 0' and above
- 0' to -5'
- 5' to -10'
- 10' to -20'
- 20' to -30'
- 30' to -35'
- 35' to -40'
- 40' to -45'
- 45' and below



LWRP: 1.2
Gage Reading: D:14.2 R:10.5 USED:12.50 NAVD
Sea Conditions: CALM
Vessel Name: OB-189
Survey Type: CONDITION
Sounding Frequency***: HIGH

NOTES:

Horizontal Coordinate System:
North American Datum of 1983 (NAD83), projected to the State Plane Coordinate System (SPCS), Louisiana South Zone. Distance units in U.S. Survey Feet.

Vertical Datum:
Soundings are shown in feet and indicate depths below Low Water Reference Plane 2007 (NAVD).

Distances on the Mississippi River, above and below Head of Passes are shown at 1 mile intervals.

The location of navigation aids are base on and provided by the U.S. Coast Guard and USACE crew.
2010 Aerial Photography data source: NAIP, USDA-FSA-APFO Aerial Photography Field Office.

Reference is N.O.A. Navigation Chart No. 11370.

** Shoalest Sounding per Quarter per Reach.

*** High frequency (200 kHz) survey data represents the first signal return at a sounding location and will include suspended solids, known as "fluff", if present. Low frequency (20 kHz) survey data normally penetrates through this "fluff" layer to depict elevations of consolidated bottom material. Low frequency accuracies may vary depending on channel conditions and fathometer settings.

**Sheet
Reference
Number
29 of 97**