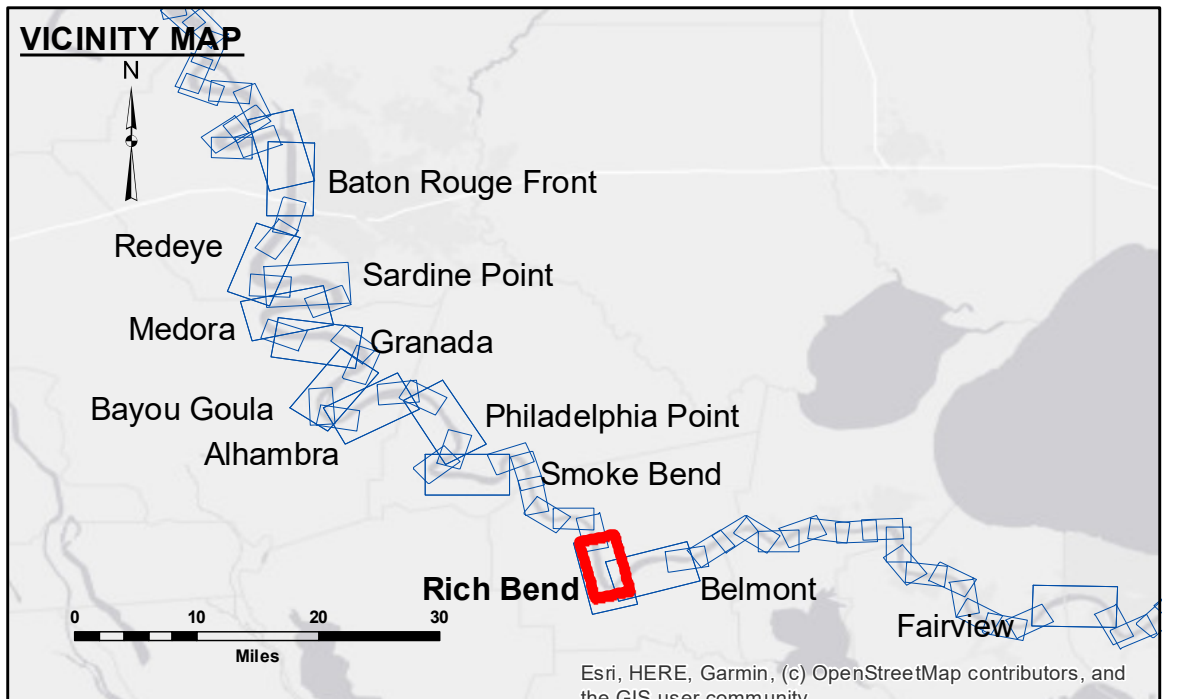




DISCLAIMER
 The United States Government furnishes these data and the recipient accepts and uses them with the express understanding that the data are not to be used for any purpose other than that for which they were originally intended. The user is responsible for the results obtained from the use of the data. The application of the data for other than its intended purpose is at the user's risk. The user is responsible for the results obtained from the use of the data. The application of the data for other than its intended purpose is at the user's risk. The user is responsible for the results obtained from the use of the data. The application of the data for other than its intended purpose is at the user's risk.

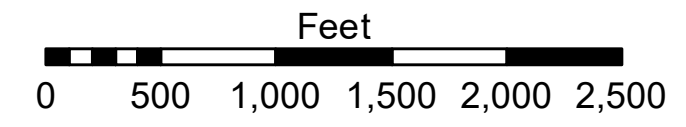
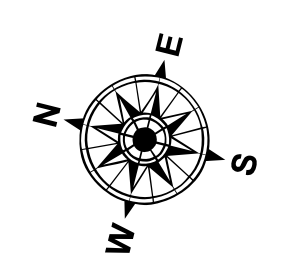
U.S. ARMY CORPS OF ENGINEERS NEW ORLEANS DISTRICT		
Submitted:	Checked By:	AC
Recommended:	Plotted By:	AO
Approved:	Checked By:	AC

**MISSISSIPPI RIVER - B. R. TO GULF
 RICH BEND CROSSING
 MD_29_RIB_20200929_CS
 29 September 2020**



LEGEND

Federal Navigation Channel	Cable Area	Borrow Area	0' and above
Federal Navigation Center Line	Placement Area	Shoalest Sounding**	0' to -5'
As-built Pipeline/Cable	Anchorage Area	Beacon, General	-5' to -10'
Unconfirmed Pipeline/Cable	Obstruction Point	Red Navigation Buoy	-10' to -20'
Project Depth Contour	Wrecks-Submerged	Green Navigation Buoy	-20' to -30'
			-30' to -35'
			-35' to -40'
			-40' to 45'
			-45' and below



LWRP: 1.2
 Gage Reading: D:8.2 R:6.2 USED:7.3 NAVD
 Sea Conditions: CALM
 Vessel Name: M/V LAFOURCHE
 Survey Type: CS
 Sounding Frequency***: HIGH

NOTES:
 Horizontal Coordinate System:
 North American Datum of 1983 (NAD83), projected to the State Plane Coordinate System (SPCS), Louisiana South Zone. Distance units in U.S. Survey Feet.
 Vertical Datum:
 Soundings are shown in feet and indicate depths below Low Water Reference Plane 2007 (NAVD).
 Distances on the Mississippi River, above and below Head of Passes are shown at 1 mile intervals.
 The location of navigation aids are based on and provided by the U.S. Coast Guard and USACE crew.
 2010 Aerial Photography data source: NAIP, USDA-FSA-APFO Aerial Photography Field Office.
 Reference is N.O.A. Navigation Chart No. 11370.
 ** Shoalest Sounding per Quarter per Reach.
 *** High frequency (200 kHz) survey data represents the first signal return at a sounding location and will include suspended solids, known as "fluff", if present. Low frequency (20 kHz) survey data normally penetrates through this "fluff" layer to depict elevations of consolidated bottom material. Low frequency accuracies may vary depending on channel conditions and fathometer settings.

**Sheet
 Reference
 Number
 29 of 97**