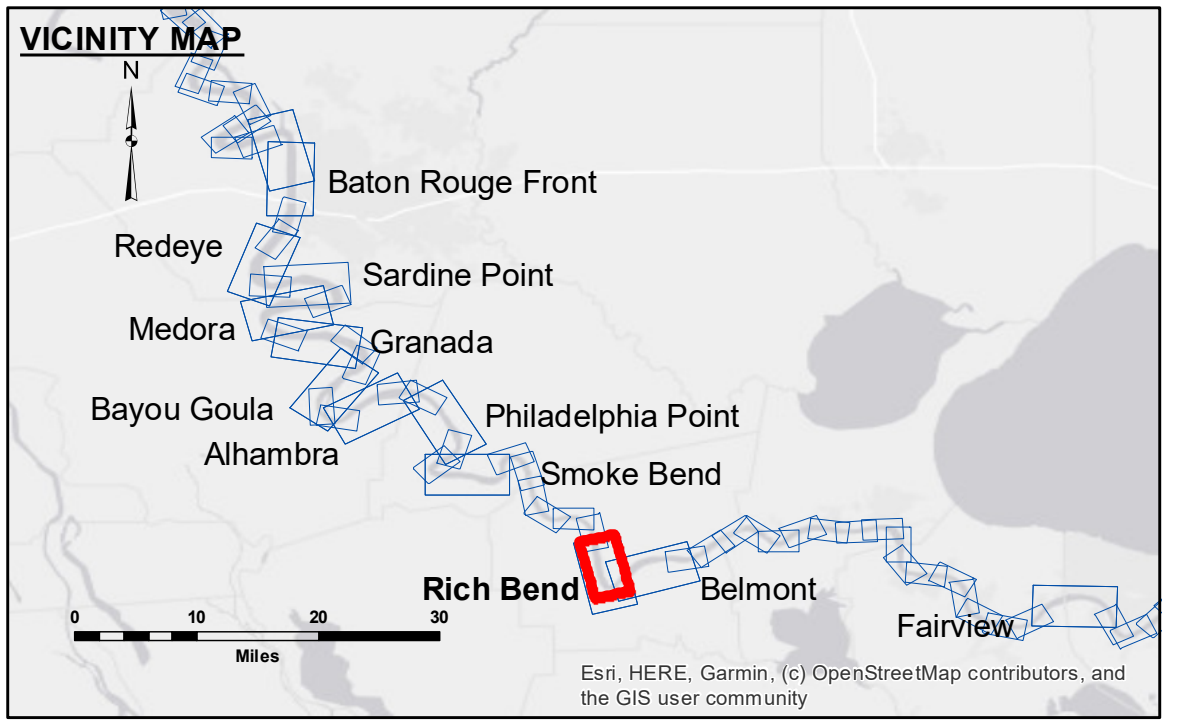


**DISCLAIMER**  
 The United States Government furnishes this data and the recipient accepts and uses them with the express understanding that the data is provided for informational purposes only and is not intended for navigation, construction, or other purposes. The user is responsible for the accuracy, reliability, and suitability of the data for any particular purpose. The user shall not be held liable for any loss or damage resulting from the use of this data. The information depicted on this map represents the results of a survey conducted on the date indicated in the title block. The information is not intended to represent the general condition existing at this time.

Submitted:	Checked By:
Recommended:	Checked By:
Approved:	Checked By:

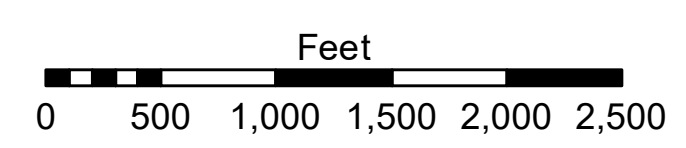
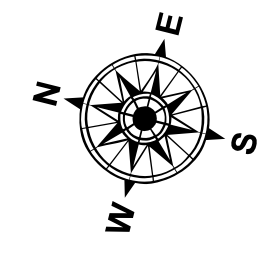
U.S. ARMY CORPS OF ENGINEERS  
NEW ORLEANS DISTRICT

**MISSISSIPPI RIVER - B.R. TO GULF  
RICH BEND CROSSING  
MD\_29\_RIB\_20201020\_CS  
20 October 2020**



**LEGEND**

Federal Navigation Channel	Cable Area	Borrow Area	0' and above
Federal Navigation Center Line	Placement Area	Shoalest Sounding**	0' to -5'
As-built Pipeline/Cable	Anchorage Area	Beacon, General	-5' to -10'
Unconfirmed Pipeline/Cable	Obstruction Point	Red Navigation Buoy	-10' to -20'
Project Depth Contour	Wrecks-Submerged	Green Navigation Buoy	-20' to -30'
			-30' to -35'
			-35' to -40'
			-40' to 45'
			-45' and below



LWRP: 1.2  
 Gage Reading: BR:11.0D:6.7 USED:6.0 NAVD  
 Sea Conditions: SMOOTH  
 Vessel Name: LAFORUCHE  
 Survey Type: CS  
 Sounding Frequency\*\*\*: HIGH

**NOTES:**  
 Horizontal Coordinate System:  
 North American Datum of 1983 (NAD83), projected to the State Plane Coordinate System (SPCS), Louisiana South Zone. Distance units in U.S. Survey Feet.  
 Vertical Datum:  
 Soundings are shown in feet and indicate depths below Low Water Reference Plane 2007 (NAVD).  
 Distances on the Mississippi River, above and below Head of Passes are shown at 1 mile intervals.  
 The location of navigation aids are based on and provided by the U.S. Coast Guard and USACE crew.  
 2010 Aerial Photography data source: NAIP, USDA-FSA-APFO Aerial Photography Field Office.  
 Reference is N.O.A. Navigation Chart No. 11370.  
 \*\* Shoalest Sounding per Quarter per Reach.  
 \*\*\* High frequency (200 kHz) survey data represents the first signal return at a sounding location and will include suspended solids, known as "fluff", if present. Low frequency (20 kHz) survey data normally penetrates through this "fluff" layer to depict elevations of consolidated bottom material. Low frequency accuracies may vary depending on channel conditions and fathometer settings.

**Sheet  
Reference  
Number  
29 of 97**