

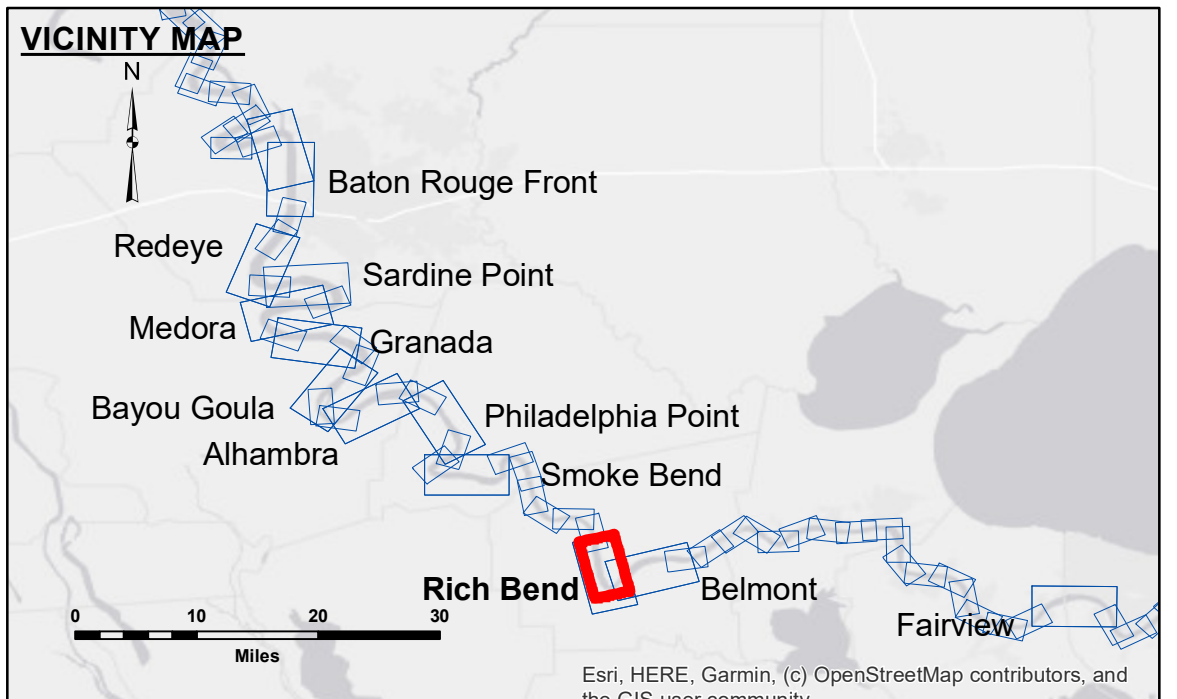


**Access Constraints:** The United States Government furnishes these data and the recipient accepts and uses them with the express understanding that they are not to be used for any purpose other than that for which they were prepared, or implied concerning the accuracy, completeness, reliability, usability or suitability, for any particular purpose of the recipient. The user is responsible for the results of any use of these data, and the application of the data for other than its intended purpose.

**Data Constraints:** Hydrographic survey data is subject to change rapidly due to several factors including but not limited to encroaching land, shifting sandbars, and other changes in the river channel. The Army Corps of Engineers accepts no responsibility for changes in the hydrographic conditions when developed after the date of the survey. Product maintainers should not rely solely upon this information depicted on this map to represent the results of a survey. The information is provided for informational purposes only and is not to be considered for engineering purposes.

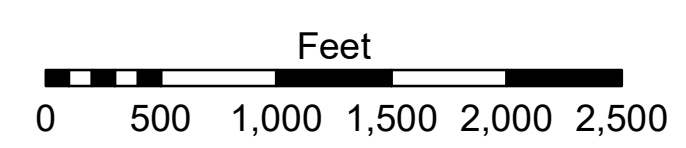
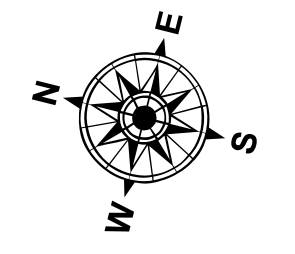
Submitted:	Surveyed By:
Recommended:	Plotted By:
Approved:	Checked By:
U.S. ARMY CORPS OF ENGINEERS NEW ORLEANS DISTRICT	
RYLAND/HOSHMAN	
AO	
AO	

**MISSISSIPPI RIVER - B.R. TO GULF  
RICH BEND CROSSING  
MD\_29\_RIB\_20201118\_CS  
18 November 2020**



**LEGEND**

--- Federal Navigation Channel	○ Cable Area	□ Borrow Area	■ 0' and above
— Federal Navigation Center Line	□ Placement Area	● Shoalest Sounding**	■ 0' to -5'
— As-built Pipeline/Cable	□ Anchorage Area	☆ Beacon, General	■ -5' to -10'
..... Unconfirmed Pipeline/Cable	⊗ Obstruction Point	◆ Red Navigation Buoy	■ -10' to -20'
— Project Depth Contour	⚓ Wrecks-Submerged	◆ Green Navigation Buoy	■ -20' to -30'
			■ -30' to -35'
			■ -35' to -40'
			■ -40' to -45'
			■ -45' and below



LWRP: 1.2  
 Gage Reading: D:7.0R:5.9 USED:6.5 NAVD  
 Sea Conditions: CALM  
 Vessel Name: OB189  
 Survey Type: CS  
 Sounding Frequency\*\*\*: HIGH

**NOTES:**

Horizontal Coordinate System:  
 North American Datum of 1983 (NAD83), projected to the State Plane Coordinate System (SPCS), Louisiana South Zone. Distance units in U.S. Survey Feet.

Vertical Datum:  
 Soundings are shown in feet and indicate depths below Low Water Reference Plane 2007 (NAVD).

Distances on the Mississippi River, above and below Head of Passes are shown at 1 mile intervals.

The location of navigation aids are base on and provided by the U.S. Coast Guard and USACE crew.  
 2010 Aerial Photography data source: NAIP, USDA-FSA-APFO Aerial Photography Field Office.

Reference is N.O.A. Navigation Chart No. 11370.

\*\* Shoalest Sounding per Quarter per Reach.

\*\*\* High frequency (200 kHz) survey data represents the first signal return at a sounding location and will include suspended solids, known as "fluff", if present. Low frequency (20 kHz) survey data normally penetrates through this "fluff" layer to depict elevations of consolidated bottom material. Low frequency accuracies may vary depending on channel conditions and fathometer settings.

**Sheet Reference Number  
29 of 97**