

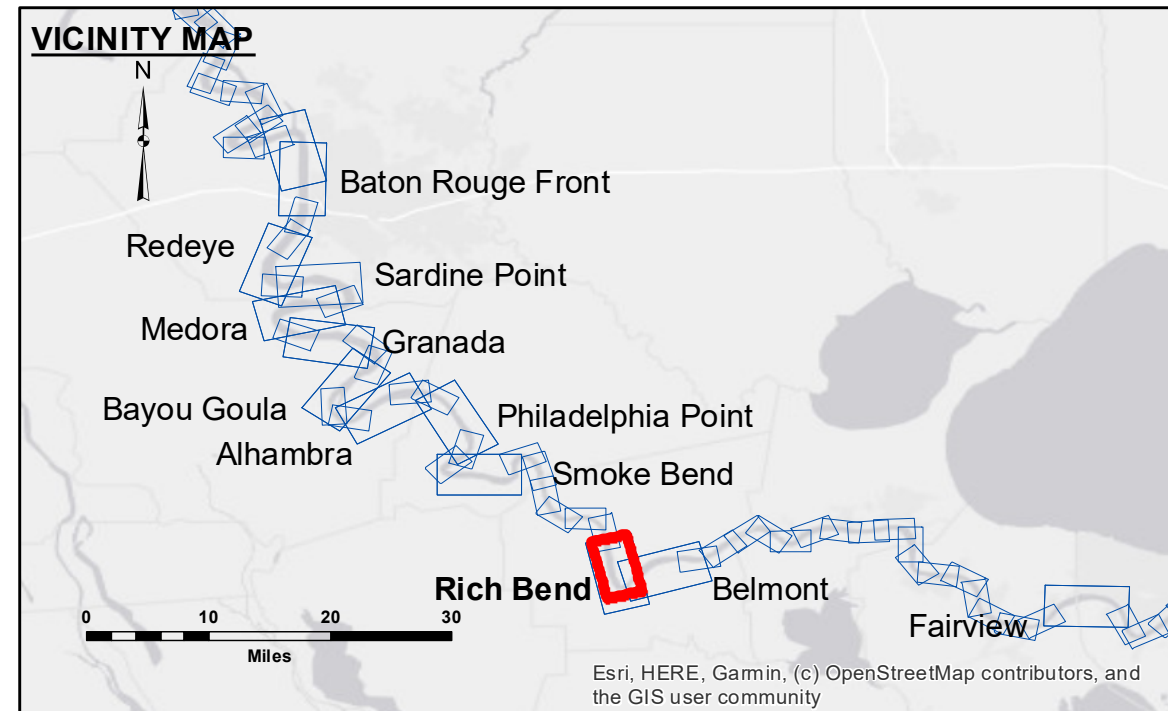


**DISCLAIMER**

The United States Government furnishes these data and the recipient accepts and uses them with the express understanding that the data are provided for informational purposes only and are not to be used for any purpose other than that intended. The recipient is responsible for the accuracy, completeness, reliability, usability or suitability for any particular purpose of the data. The recipient is responsible for the accuracy, completeness, reliability, usability or suitability for any particular purpose of the data. The recipient is responsible for the accuracy, completeness, reliability, usability or suitability for any particular purpose of the data. The recipient is responsible for the accuracy, completeness, reliability, usability or suitability for any particular purpose of the data.

U.S. ARMY CORPS OF ENGINEERS NEW ORLEANS DISTRICT		
Submitted:	Surveyed By: RYLAND/SIMMONS	Plotted By: JH
Recommended:	Checked By: JH	Checked By: JH
Approved:	Chief, Survey Section	Chief, Waterways Maintenance Section

**MISSISSIPPI RIVER - B.R. TO GULF  
RICH BEND CROSSING  
MD\_29\_RIB\_20230523\_CS  
23 May 2023**



**LEGEND**

--- Federal Navigation Channel	● Cable Area	□ Borrow Area	0' and above
— Federal Navigation Center Line	□ Placement Area	● Shoalest Sounding**	0' to -5'
— As-built Pipeline/Cable	□ Anchorage Area	☆ Beacon, General	-5' to -10'
..... Unconfirmed Pipeline/Cable	⊗ Obstruction Point	★ Red Navigation Buoy	-10' to -20'
— Project Depth Contour	⚓ Wrecks-Submerged	◆ Green Navigation Buoy	-20' to -30'
			-30' to -35'
			-35' to -40'
			-40' to 45'
			-45' to 50'
			-50' and below

**NOTES:**

Horizontal Coordinate System:  
North American Datum of 1983 (NAD83), projected to the State Plane Coordinate System (SPCS), Louisiana South Zone. Distance units in U.S. Survey Feet.

Vertical Datum:  
Soundings are shown in feet and indicate depths below Low Water Reference Plane 2007 (NAVD).

Distances on the Mississippi River, above and below Head of Passes are shown at 1 mile intervals.

The location of navigation aids are based on and provided by the U.S. Coast Guard and USACE crew.

2010 Aerial Photography data source: NAIP, USDA-FSA-APFO Aerial Photography Field Office.

Reference is N.O.A.A. Navigation Chart No. 11370.

\*\* Shoalest Sounding per Quarter per Reach.

\*\*\* High frequency (200 kHz) survey data represents the first signal return at a sounding location and will include suspended solids, known as "fluff", if present. Low frequency (20 kHz) survey data normally penetrates through this "fluff" layer to depict elevations of consolidated bottom material. Low frequency accuracies may vary depending on channel conditions and bathymeter settings.

LWRP: 1.2  
Gage Reading: D:15.6 R:11.7 USED: 13.80 NAVD  
Sea Conditions: CALM  
Vessel Name: LAFOURCHE  
Survey Type: CS  
Sounding Frequency\*\*\*: HIGH