

DISCLAIMER: The data represents the results of data collection for a specific US Army Corps of Engineers project and is not intended for use for other than the project for which it was collected. The user is responsible for the results of the data and for the application of the data for other than the project for which it was collected.

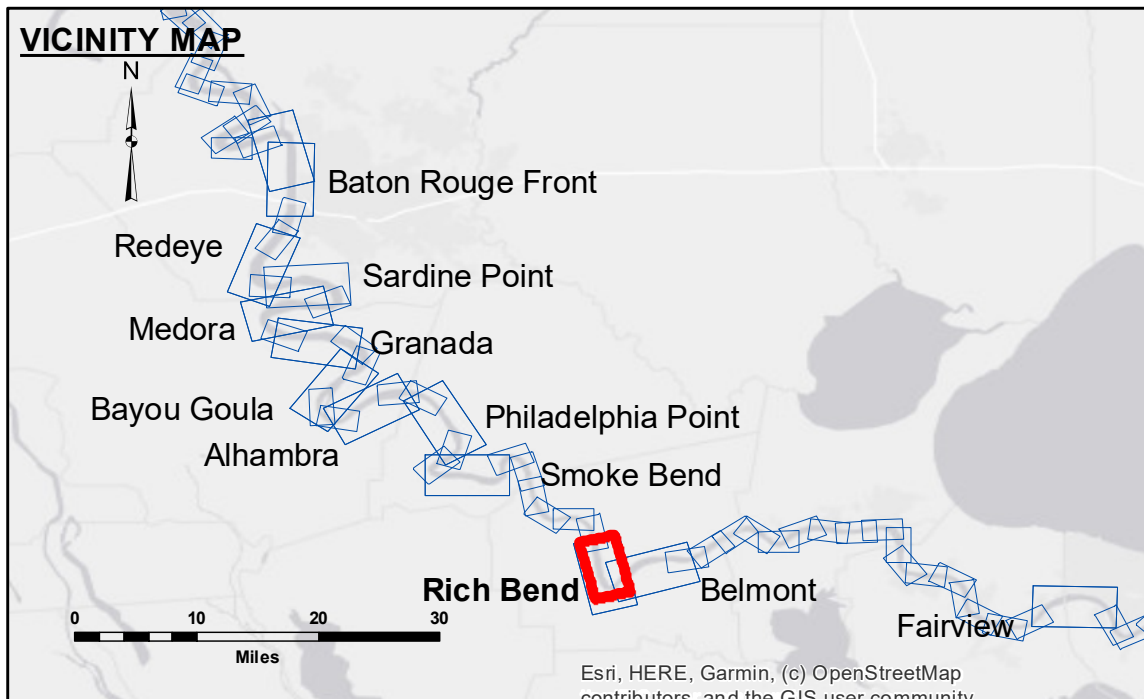
AGENCY: The United States Government furnishes these data and the recipient accepts and uses them with the express understanding that the data are not to be used for any purpose other than that for which they were provided, and that the user is responsible for the results of the data and for the application of the data for other than the project for which they were provided.

DISTRICT: The data is subject to change without notice and the user is responsible for the results of the data and for the application of the data for other than the project for which they were provided.

The information depicted on this map represents the results of a survey conducted on the Mississippi River. The information is considered to represent the general condition existing at that time.

U.S. ARMY CORPS OF ENGINEERS NEW ORLEANS DISTRICT	
Submitted:	ADAMS/CHAMPINE
Recommended:	JH
Approved:	JH

**MISSISSIPPI RIVER - B.R. TO GULF
RICH BEND CROSSING
MD_29_RIB_20240425_CS
25 April 2024**



LEGEND	
— Federal Navigation Channel	• Cable Area
— Federal Navigation Center Line	■ Placement Area
— As-built Pipeline/Cable	□ Anchorage Area
..... Unconfirmed Pipeline/Cable	⊗ Obstruction Point
— Project Depth Contour	★ Wrecks-Submerged
□ Borrow Area	★ Beacon, General
● Shoalest Sounding**	♦ Red Navigation Buoy
★ Beacon, General	♦ Green Navigation Buoy

NOTES:

Horizontal Coordinate System:
North American Datum of 1983 (NAD83), projected to the State Plane Coordinate System (SPCS), Louisiana South Zone. Distance units in U.S. Survey Feet.

Vertical Datum:
Soundings are shown in feet and indicate depths below Low Water Reference Plane 2007 (NAVD).

Distances on the Mississippi River, above and below Head of Passes are shown at 1 mile intervals.

The location of navigation aids are based on and provided by the U.S. Coast Guard and USACE crew.

2010 Aerial Photography data source: NAIP, USDA-FSA-APFO Aerial Photography Field Office.

Reference is N.O.A. Navigation Chart No. 11370.

** Shoalest Sounding per Quarter per Reach.

*** High frequency (200 kHz) survey data represents the first signal return at a sounding location and will include suspended solids, known as "fluff", if present. Low frequency (20 kHz) survey data normally penetrates through this "fluff" layer to depict elevations of consolidated bottom material. Low frequency accuracies may vary depending on channel conditions and fathometer settings.

LWRP: 1.2
Gage Reading: D:20.7 R15.3 USED: 18.4 NAVD88
Sea Conditions: CALM
Vessel Name: VALENTOUR
Survey Type: CONDITION
Sounding Frequency***: LOW

Feet
0 500 1,000 1,500 2,000 2,500