



**Accession:** The United States Government makes these data and the recipient accepts and uses them with the express understanding that the data are not to be used for any purpose other than that for which they were originally collected, and that the user is responsible for the results of any use of the data for other than the intended purpose.

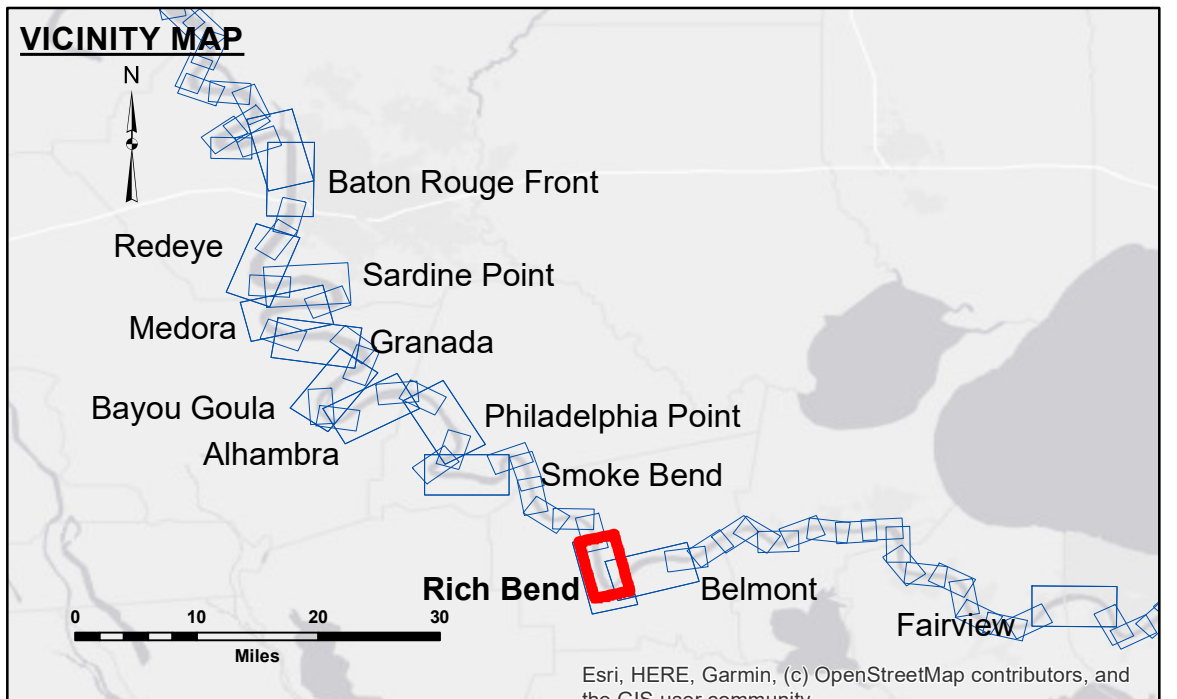
**Disclaimer:** The information depicted on this map represents the results of a survey conducted by the United States Army Corps of Engineers. The information is provided as a service and is not to be used for any purpose other than that for which it was originally collected. The user is responsible for the results of any use of the data for other than the intended purpose.

**Accession:** The United States Government makes these data and the recipient accepts and uses them with the express understanding that the data are not to be used for any purpose other than that for which they were originally collected, and that the user is responsible for the results of any use of the data for other than the intended purpose.

**Disclaimer:** The information depicted on this map represents the results of a survey conducted by the United States Army Corps of Engineers. The information is provided as a service and is not to be used for any purpose other than that for which it was originally collected. The user is responsible for the results of any use of the data for other than the intended purpose.

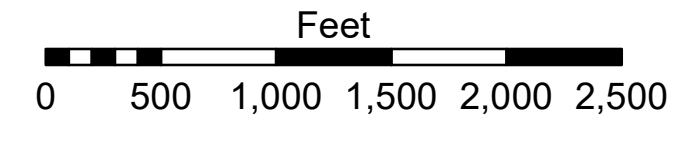
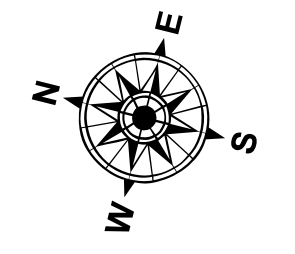
U.S. ARMY CORPS OF ENGINEERS NEW ORLEANS DISTRICT	
Submitted:	Surveyed By: RYLAND/SIMMONS
Recommended:	Plotted By: JH
Approved:	Checked By: JH

**MISSISSIPPI RIVER - B.R. TO GULF  
RICH BEND CROSSING  
MD\_29\_RIB\_20240715\_CS  
15 July 2024**



LEGEND	
--- Federal Navigation Channel	○ Cable Area
— Federal Navigation Center Line	□ Placement Area
— As-built Pipeline/Cable	□ Anchorage Area
..... Unconfirmed Pipeline/Cable	⊗ Obstruction Point
— Project Depth Contour	⚓ Wrecks-Submerged
□ Borrow Area	★ Beacon, General
● Shoalest Sounding**	♦ Red Navigation Buoy
★ Beacon, General	♦ Green Navigation Buoy

0' and above	0' to -5'
-5' to -10'	-10' to -20'
-20' to -30'	-30' to -35'
-35' to -40'	-40' to -45'
-45' to -50'	-50' and below



LWRP: 1.2  
Gage Reading: D:10.6 R:7.6 USED:9.30 NAVD88  
Sea Conditions: CALM  
Vessel Name: M/V LAFOURCHE  
Survey Type: CS  
Sounding Frequency\*\*\*: HIGH

**NOTES:**

Horizontal Coordinate System:  
North American Datum of 1983 (NAD83), projected to the State Plane Coordinate System (SPCS), Louisiana South Zone. Distance units in U.S. Survey Feet.

Vertical Datum:  
Soundings are shown in feet and indicate depths below Low Water Reference Plane 2007 (NAVD).

Distances on the Mississippi River, above and below Head of Passes are shown at 1 mile intervals.

The location of navigation aids are base on and provided by the U.S. Coast Guard and USACE crew.

2010 Aerial Photography data source: NAIP, USDA-FSA-APFO Aerial Photography Field Office.

Reference is N.O.A. Navigation Chart No. 11370.

\*\* Shoalest Sounding per Quarter per Reach.

\*\*\* High frequency (200 kHz) survey data represents the first signal return at a sounding location and will include suspended solids, known as "fluff", if present. Low frequency (20 kHz) survey data normally penetrates through this "fluff" layer to depict elevations of consolidated bottom material. Low frequency accuracies may vary depending on channel conditions and fathometer settings.

**Sheet Reference Number  
29 of 97**