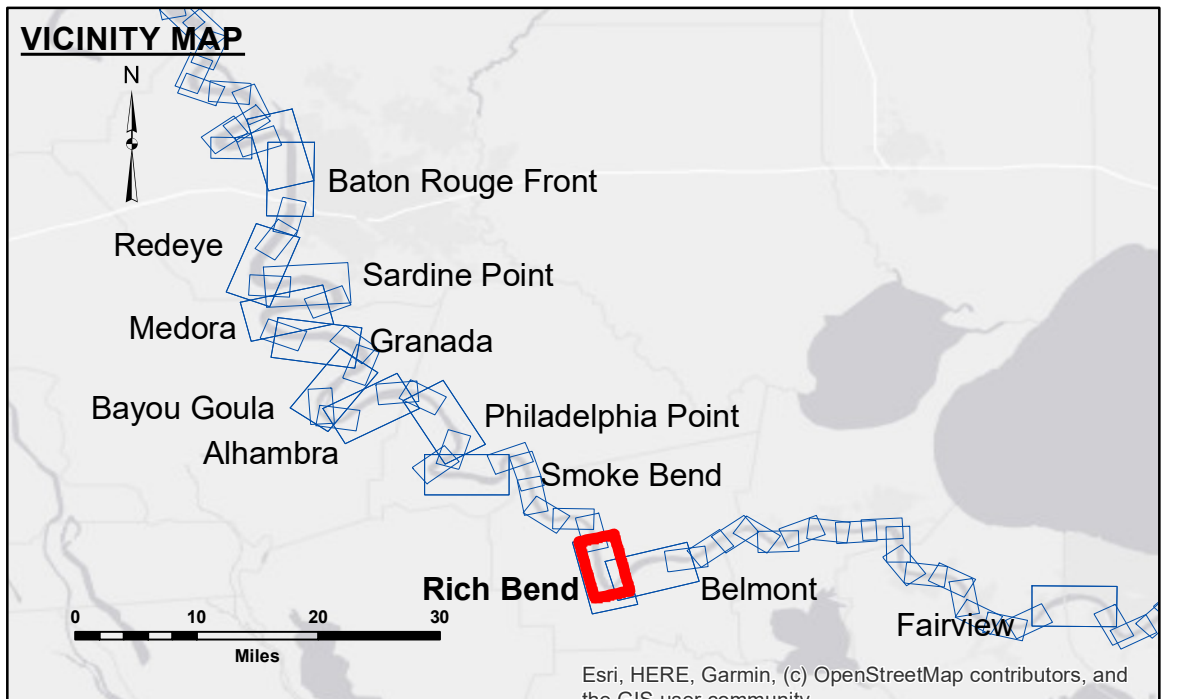


Access Conditions: The United States Government furnishes these data and the recipient accepts and uses them with the express understanding that the data are not to be used for any purpose other than that for which they were originally prepared, and that the user is responsible for the results obtained. The user is responsible for the results obtained. The user is responsible for the results obtained. The user is responsible for the results obtained.

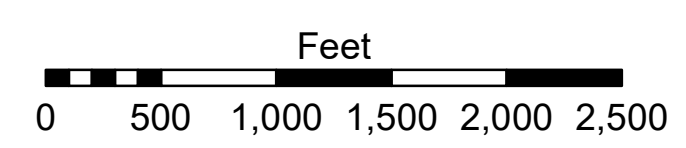
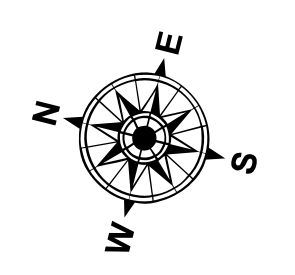
Disclaimer: The information depicted on this map represents the results of a survey conducted by the United States Army Corps of Engineers. The information is not to be used for any purpose other than that for which it was originally prepared. The user is responsible for the results obtained. The user is responsible for the results obtained. The user is responsible for the results obtained.

U.S. ARMY CORPS OF ENGINEERS NEW ORLEANS DISTRICT		
Submitted:	Surveyed By:	Plotted By:
Recommended:	RYLAND/SIMMONS	JH
Approved:	Chief, Survey Section	Checked By:
		JH

MISSISSIPPI RIVER - B.R. TO GULF
RICH BEND CROSSING
MD_29_RIB_20240924_CS
24 September 2024



LEGEND		
--- Federal Navigation Channel	○ Cable Area	□ Borrow Area
— Federal Navigation Center Line	■ Placement Area	● Shoalest Sounding**
— As-built Pipeline/Cable	⊗ Anchorage Area	☆ Beacon, General
..... Unconfirmed Pipeline/Cable	⊗ Obstruction Point	◆ Red Navigation Buoy
— Project Depth Contour	⚓ Wrecks-Submerged	◆ Green Navigation Buoy



LWRP: 1.2
 Gage Reading: D:3.7 R:3.0 USED: 3.4 NAVD88
 Sea Conditions: CALM
 Vessel Name: M/V LAFOURCHE
 Survey Type: CS
 Sounding Frequency***: HIGH

NOTES:

Horizontal Coordinate System:
 North American Datum of 1983 (NAD83), projected to the State Plane Coordinate System (SPCS), Louisiana South Zone. Distance units in U.S. Survey Feet.

Vertical Datum:
 Soundings are shown in feet and indicate depths below Low Water Reference Plane 2007 (NAVD).

Distances on the Mississippi River, above and below Head of Passes are shown at 1 mile intervals.

The location of navigation aids are based on and provided by the U.S. Coast Guard and USACE crew.
 2010 Aerial Photography data source: NAIP, USDA-FSA-APFO Aerial Photography Field Office.

Reference is N.O.A. Navigation Chart No. 11370.

** Shoalest Sounding per Quarter per Reach.

*** High frequency (200 kHz) survey data represents the first signal return at a sounding location and will include suspended solids, known as "fluff", if present. Low frequency (20 kHz) survey data normally penetrates through this "fluff" layer to depict elevations of consolidated bottom material. Low frequency accuracies may vary depending on channel conditions and bathymeter settings.

Sheet Reference Number
29 of 97