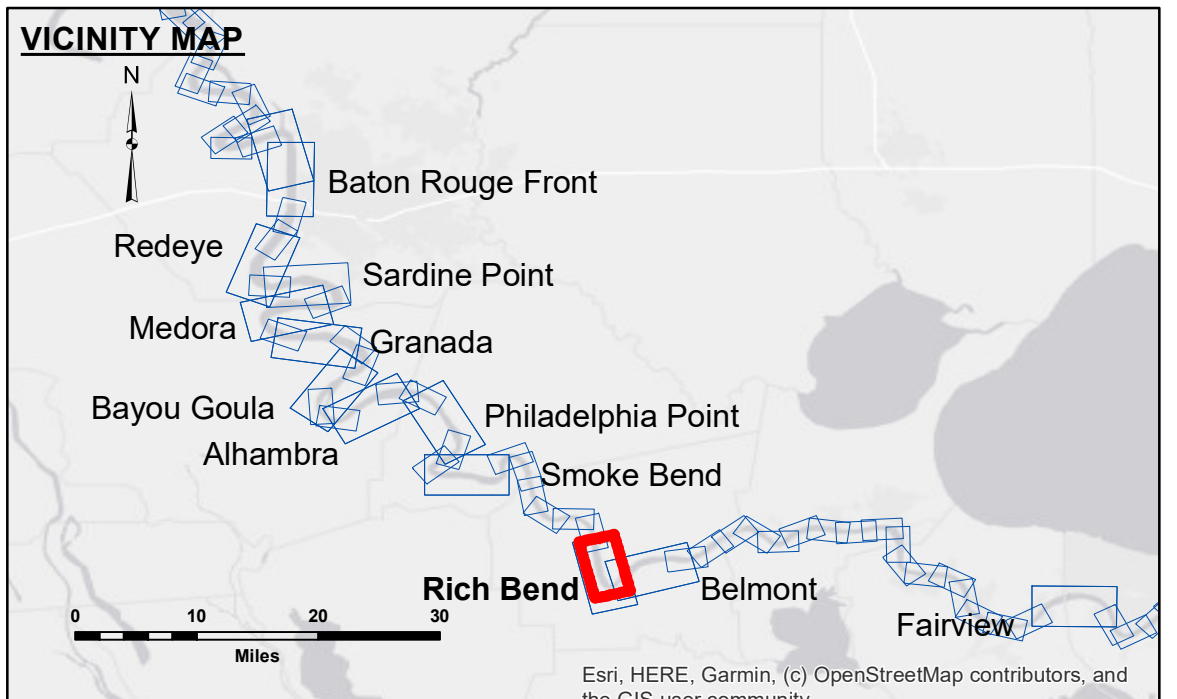


Access Conditions: The United States Government furnishes these data and the recipient accepts and uses them with the express understanding that the data are not to be used for any purpose other than that for which they were originally collected, and that the user is responsible for the accuracy, completeness, and reliability of the data for any particular purpose of the user. The user is responsible for the accuracy, completeness, and reliability of the data for any particular purpose of the user. The user is responsible for the accuracy, completeness, and reliability of the data for any particular purpose of the user.

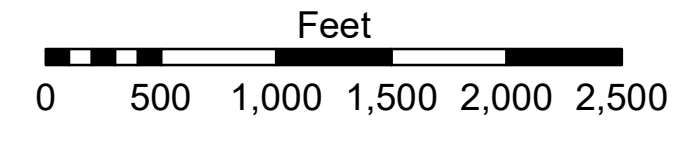
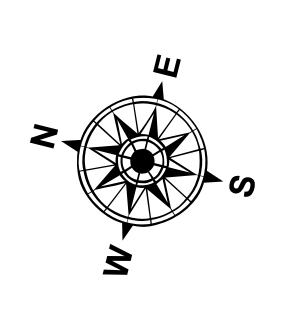
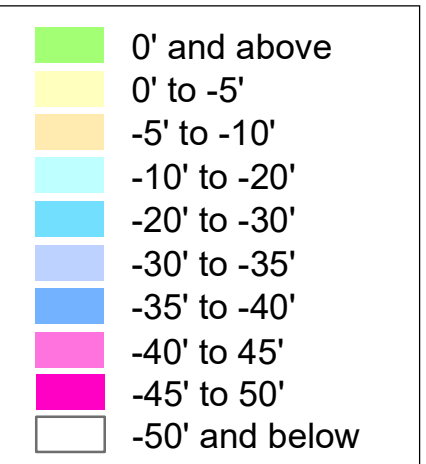
Submitted:	Surveyed By: PM, LT
Recommended:	Plotted By: BD
Approved:	Checked By: AD/JH

U.S. ARMY CORPS OF ENGINEERS
NEW ORLEANS DISTRICT

**MISSISSIPPI RIVER - B.R. TO GULF
RICH BEND CROSSING
MD_29_RIB_20241016_CS
16 October 2024**



LEGEND	
--- Federal Navigation Channel	● Cable Area
— Federal Navigation Center Line	■ Placement Area
— As-built Pipeline/Cable	□ Anchorage Area
..... Unconfirmed Pipeline/Cable	⊗ Obstruction Point
— Project Depth Contour	★ Wrecks-Submerged
□ Borrow Area	★ Beacon, General
● Shoalest Sounding**	◆ Red Navigation Buoy
★ Beacon, General	◆ Green Navigation Buoy



LWRP: 1.2
Gage Reading: RTN USED:4.30 NAVD88
Sea Conditions: CALM
Vessel Name: DUCARPE
Survey Type: CS
Sounding Frequency***: 200

NOTES:
Horizontal Coordinate System: North American Datum of 1983 (NAD83), projected to the State Plane Coordinate System (SPCS), Louisiana South Zone. Distance units in U.S. Survey Feet.
Vertical Datum: Soundings are shown in feet and indicate depths below Low Water Reference Plane 2007 (NAVD).
Distances on the Mississippi River, above and below Head of Passes are shown at 1 mile intervals.
The location of navigation aids are base on and provided by the U.S. Coast Guard and USACE crew.
2010 Aerial Photography data source: NAIP, USDA-FSA-APFO Aerial Photography Field Office.
Reference is N.O.A. Navigation Chart No. 11370.
** Shoalest Sounding per Quarter per Reach.
*** High frequency (200 kHz) survey data represents the first signal return at a sounding location and will include suspended solids, known as "fluff", if present. Low frequency (20 kHz) survey data normally penetrates through this "fluff" layer to depict elevations of consolidated bottom material. Low frequency accuracies may vary depending on channel conditions and fathometer settings.

**Sheet Reference Number
29 of 97**

Revision Number:
4.2-20240420