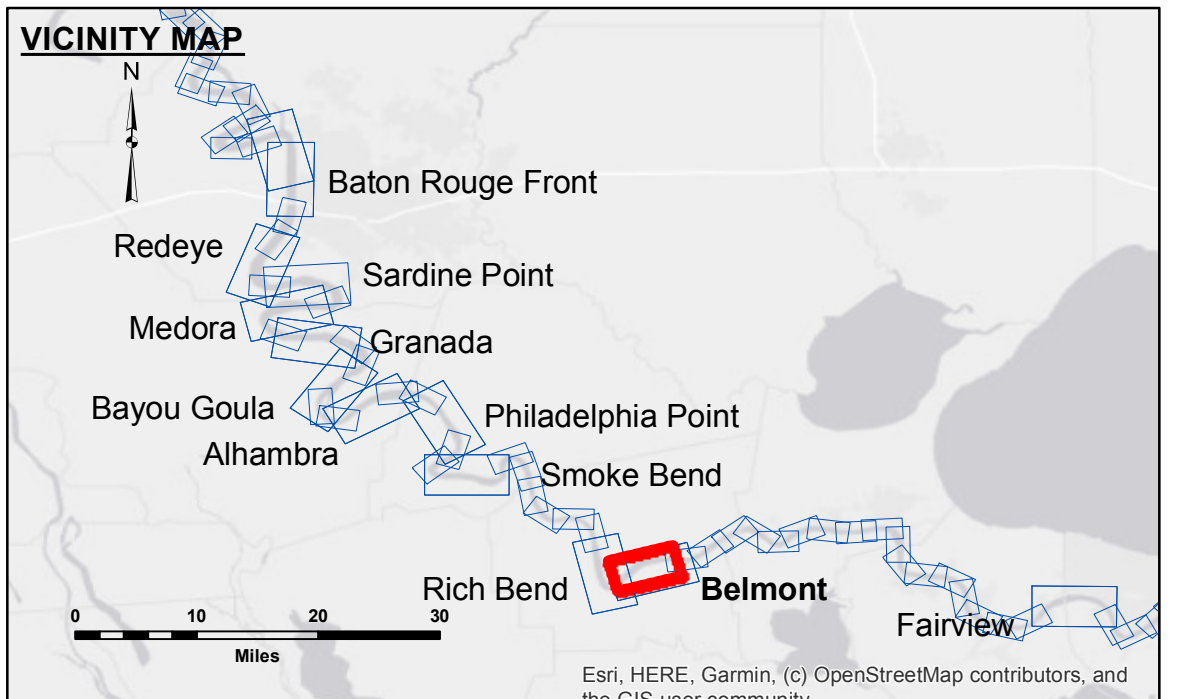


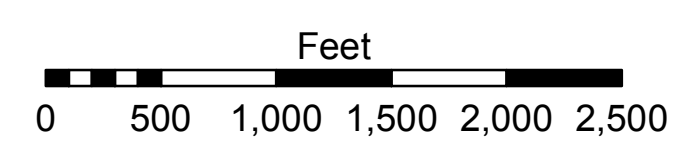
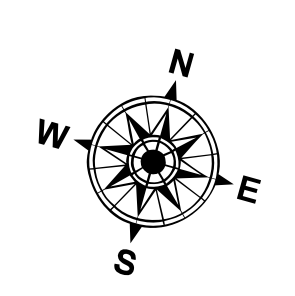
DISCLAIMER
 The United States Government furnishes these data and the recipient accepts and uses them with the express understanding that the data are not to be used for any purpose other than that for which they were prepared, or implied concerning the accuracy, completeness, or reliability of the data. The user is responsible for the results of the application of the data for other than its intended purpose.
 Data Constants: Hydrographic survey data is subject to change nearly due to several factors including but not limited to changing hydrographic conditions when developed after the date of the survey. The user is responsible for the results of the application of these data to other than the intended purpose. The recipient may not transfer these data to others without also transferring this Disclaimer. The information depicted on this map represents the results of a survey conducted on or about the date shown. It is not to be considered to represent the general condition existing at that time.

| | | |
|--|--------------------------------------|-------------------|
| U.S. ARMY CORPS OF ENGINEERS NEW ORLEANS DISTRICT | | |
| Submitted: | Surveyed By: RYLAND/HOSHMAN | Plotted By: AO |
| Recommended: | Chief, Survey Section | Checked By: AO |
| Approved: | Chief, Waterways Maintenance Section | |

**MISSISSIPPI RIVER - B.R. TO GULF
 BELMONT CROSSING
 MD_30_BELX_20201118_CS
 18 November 2020**



| LEGEND | | |
|----------------------------------|---------------------|-------------------------|
| --- Federal Navigation Channel | ○ Cable Area | □ Borrow Area |
| — Federal Navigation Center Line | ▭ Placement Area | ● Shoalest Sounding** |
| — As-built Pipeline/Cable | ⊗ Anchorage Area | ☆ Beacon, General |
| Unconfirmed Pipeline/Cable | ⊗ Obstruction Point | ◆ Red Navigation Buoy |
| — Project Depth Contour | ⚓ Wrecks-Submerged | ◆ Green Navigation Buoy |
| | | ■ 0' and above |
| | | ■ 0' to -5' |
| | | ■ -5' to -10' |
| | | ■ -10' to -20' |
| | | ■ -20' to -30' |
| | | ■ -30' to -35' |
| | | ■ -35' to -40' |
| | | ■ -40' to -45' |
| | | ■ -45' and below |



LWRP: 1.2
 Gage Reading: D:7.0R:5.9 USED:6.4 NAVD
 Sea Conditions: CALM
 Vessel Name: OB189
 Survey Type: CS
 Sounding Frequency***: HIGH

NOTES:
 Horizontal Coordinate System:
 North American Datum of 1983 (NAD83), projected to the State Plane Coordinate System (SPCS), Louisiana South Zone. Distance units in U.S. Survey Feet.
 Vertical Datum:
 Soundings are shown in feet and indicate depths below Low Water Reference Plane 2007 (NAVD).
 Distances on the Mississippi River, above and below Head of Passes are shown at 1 mile intervals.
 The location of navigation aids are based on and provided by the U.S. Coast Guard and USACE crew.
 2015 Aerial Photography data source: NAIP, USDA-FSA-APFO Aerial Photography Field Office.
 Reference is N.O.A. Navigation Chart No. 11370.
 ** Shoalest Sounding per Quarter per Reach.
 *** High frequency (200 kHz) survey data represents the first signal return at a sounding location and will include suspended solids, known as "fluff", if present. Low frequency (20 kHz) survey data normally penetrates through this "fluff" layer to depict elevations of consolidated bottom material. Low frequency accuracies may vary depending on channel conditions and fathometer settings.

**Sheet Reference Number
 30 of 97**