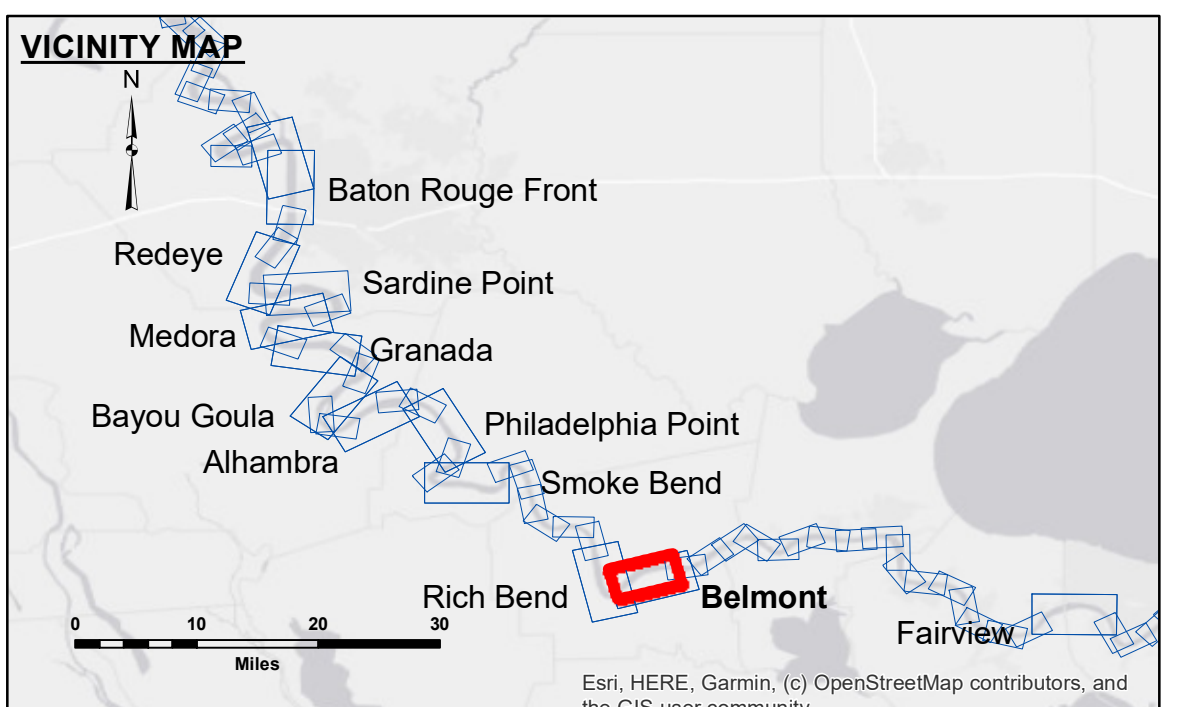


**DISCLAIMER**  
 Distribution Liability: The data represents the results of data collection and processing for a specific US Army Corps of Engineers project. It is only valid for its intended use, including time and accuracy specifications. The user is responsible for the results. The user's application of the data for other than its intended purpose.  
 Data Constraints: Hydrographic survey data is subject to change rapidly due to several factors including, but not limited to, dredging, shifting sandbars, and other natural processes. The user is responsible for the data. The US Army Corps of Engineers accepts no responsibility for changes in the hydrographic conditions when developed after the date of the survey. Product maintainers should not rely solely upon this information.

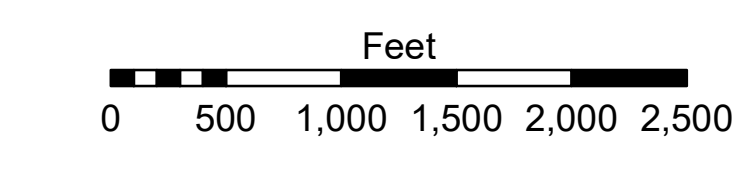
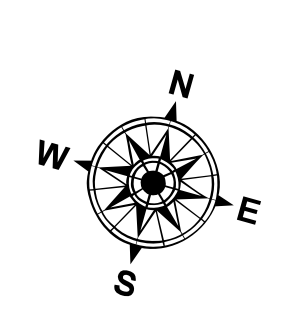
**ACCESS LIMITATIONS**  
 The United States Government furnishes these data and the recipient accepts and uses them with the express understanding that they are for the recipient's use only. The recipient is responsible for the accuracy, completeness, reliability, usability or suitability, for any particular purpose of the data. The recipient shall not be held liable for any damage or loss, under no liability whatsoever to any person by reason of any use made hereof. These data belong to the Government. Therefore the recipient shall not be held liable for any damage or loss, under no liability whatsoever to any person by reason of any use made hereof. These data belong to the Government. Therefore the recipient shall not be held liable for any damage or loss, under no liability whatsoever to any person by reason of any use made hereof. These data belong to the Government. Therefore the recipient shall not be held liable for any damage or loss, under no liability whatsoever to any person by reason of any use made hereof.

U.S. ARMY CORPS OF ENGINEERS NEW ORLEANS DISTRICT	
Submitted:	Surveyed By: RYLAND/SOULI
Recommended:	Plotted By: BD
Approved:	Checked By: AC

**MISSISSIPPI RIVER - B.R. TO GULF  
 BELMONT CROSSING  
 MD\_30\_BELX\_20220215\_CS  
 15 February 2022**



LEGEND		
--- Federal Navigation Channel	○ Cable Area	□ Borrow Area
— Federal Navigation Center Line	■ Placement Area	● Shoalest Sounding**
— As-built Pipeline/Cable	⊠ Anchorage Area	★ Beacon, General
⋯ Unconfirmed Pipeline/Cable	⊗ Obstruction Point	◆ Red Navigation Buoy
— Project Depth Contour	⚓ Wrecks-Submerged	◆ Green Navigation Buoy
		■ 0' and above
		■ 0' to -5'
		■ -5' to -10'
		■ -10' to -20'
		■ -20' to -30'
		■ -30' to -35'
		■ -35' to -40'
		■ -40' to 45'
		■ -45' to 50'
		■ -50' and below



LWRP: 1.2  
 Gage Reading: D:10.9 R:8.0 USED:9.20 NAVD  
 Sea Conditions: CALM  
 Vessel Name: OB-189  
 Survey Type: CONDITION  
 Sounding Frequency\*\*\*: HIGH

**NOTES:**  
 Horizontal Coordinate System:  
 North American Datum of 1983 (NAD83), projected to the State Plane  
 Coordinate System (SPCS), Louisiana South Zone. Distance units in U.S. Survey Feet.  
 Vertical Datum:  
 Soundings are shown in feet and indicate depths below Low Water Reference Plane 2007 (NAVD).  
 Distances on the Mississippi River, above and below Head of Passes are shown  
 at 1 mile intervals.  
 The location of navigation aids are base on and provided by the U.S. Coast Guard and USACE crew.  
 2015 Aerial Photography data source: NAIP, USDA-FSA-APFO Aerial Photography Field Office.  
 Reference is N.O.A. Navigation Chart No. 11370.  
 \*\* Shoalest Sounding per Quarter per Reach.  
 \*\*\* High frequency (200 kHz) survey data represents the first signal return at a sounding  
 location and will include suspended solids, known as "fluff", if present. Low frequency (20 kHz)  
 survey data normally penetrates through this "fluff" layer to depict elevations of consolidated bottom  
 material. Low frequency accuracies may vary depending on channel conditions and fathometer  
 settings.

**Sheet  
 Reference  
 Number  
 30 of 97**

Revision Number:  
 4.2-20200420