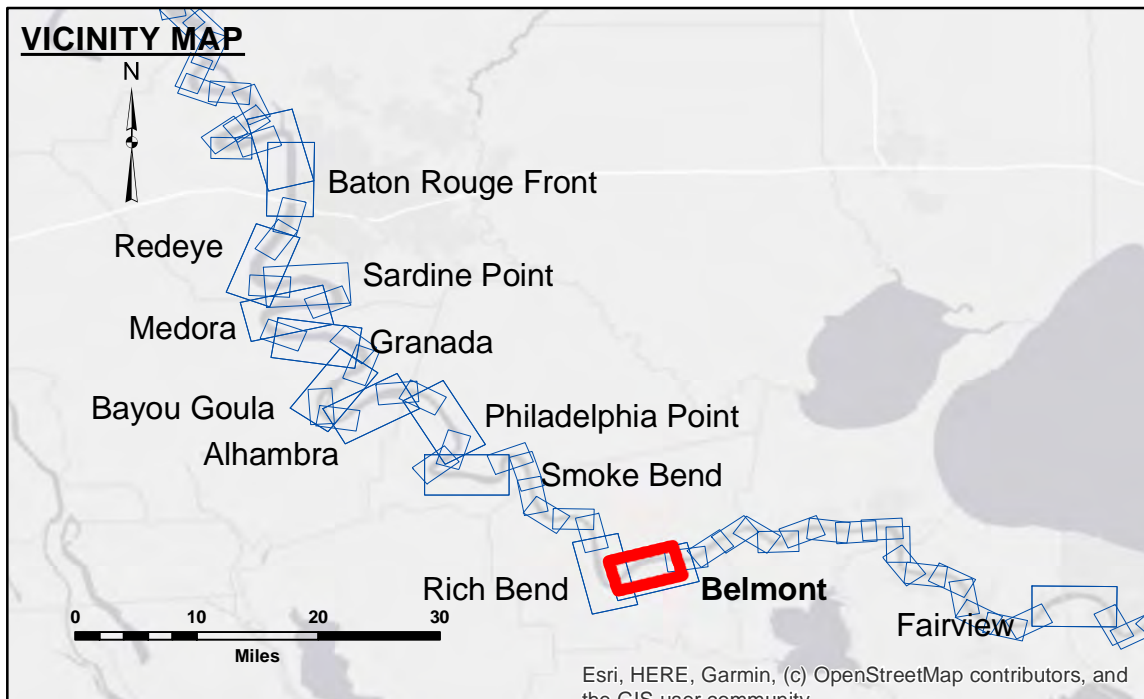


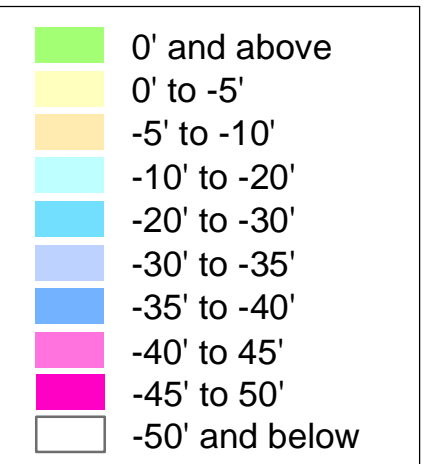
DISCLAIMER: The data represents the results of data collection for a specific project. The user is responsible for the accuracy, completeness, and reliability of the data for their intended use. The user is responsible for the results of the data for their intended use. The user is responsible for the results of the data for their intended use.

Submitted:	Surveyed By:	Checked By:
Room/Desk:	RYLAND/SIMMONS	AD/JH
Approved:	Plotted By:	
	BD	

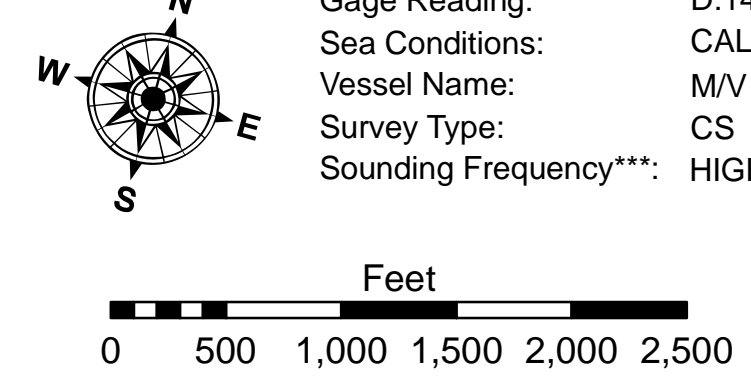
**MISSISSIPPI RIVER - B.R. TO GULF
BELMONT CROSSING
MD_30_BELX_20230501_CS
01 May 2023**



LEGEND	
--- Federal Navigation Channel	○ Cable Area
— Federal Navigation Center Line	□ Placement Area
— As-built Pipeline/Cable	□ Anchorage Area
..... Unconfirmed Pipeline/Cable	⊗ Obstruction Point
— Project Depth Contour	✈ Wrecks-Submerged
□ Borrow Area	★ Beacon, General
● Shoalest Sounding**	◆ Red Navigation Buoy
◆ Green Navigation Buoy	



LWRP: 1.2
Gage Reading: D:14.5 R:10.6 USED:12.30 NAVD
Sea Conditions: CALM
Vessel Name: M/V LAFORUCHE
Survey Type: CS
Sounding Frequency*:** HIGH



NOTES:
 Horizontal Coordinate System:
 North American Datum of 1983 (NAD83), projected to the State Plane Coordinate System (SPCS), Louisiana South Zone. Distance units in U.S. Survey Feet.
 Vertical Datum:
 Soundings are shown in feet and indicate depths below Low Water Reference Plane 2007 (NAVD).
 Distances on the Mississippi River, above and below Head of Passes are shown at 1 mile intervals.
 The location of navigation aids are base on and provided by the U.S. Coast Guard and USACE crew.
 2015 Aerial Photography data source: NAIP, USDA-FSA-APFO Aerial Photography Field Office.
 Reference is N.O.A. Navigation Chart No. 11370.
 ** Shoalest Sounding per Quarter per Reach.
 *** High frequency (200 kHz) survey data represents the first signal return at a sounding location and will include suspended solids, known as "fluff", if present. Low frequency (20 kHz) survey data normally penetrates through this "fluff" layer to depict elevations of consolidated bottom material. Low frequency accuracies may vary depending on channel conditions and fathometer settings.

**Sheet Reference Number
30 of 97**