

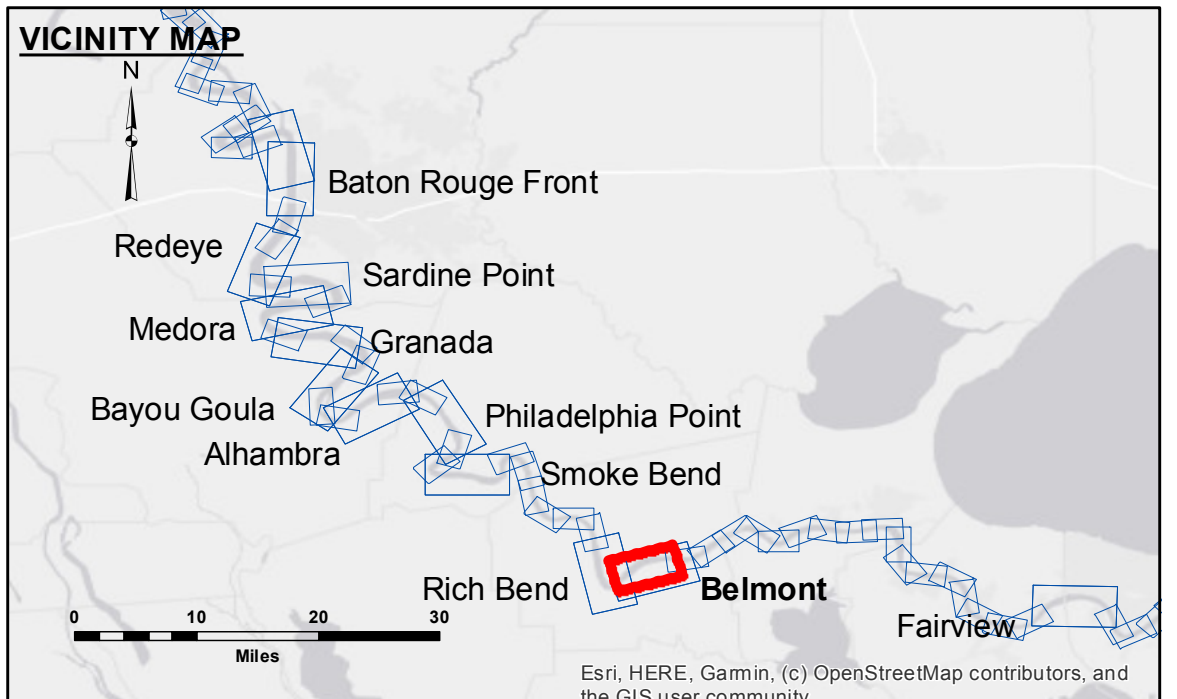
ACCESSORIES: The United States Government furnishes these data and the recipient accepts and uses them with the express understanding that the data are not to be used for any purpose other than that for which they were originally prepared, and that the recipient is responsible for the results of any use of the data for other than its intended purpose.

Distribution Liability: The data represents the results of data collection for a specific US Army Corps of Engineers project and is only valid for its intended use, context, time and accuracy specifications. The user is responsible for the results of any use of the data for other than its intended purpose.

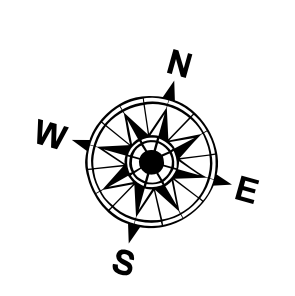
Data Constraints: Hydrographic survey data is subject to change due to several factors including but not limited to changing hydrographic conditions, changes in bathymetry, and changes in the hydrographic conditions which develop after the date of the survey. The information depicted on this map represents the results of a survey conducted on the date of the survey. The Corps of Engineers does not warrant the accuracy of the data for any other use. Product maintainers should not rely solely upon this information.

U.S. ARMY CORPS OF ENGINEERS NEW ORLEANS DISTRICT		
Submitted:	Surveyed By: SPPM	Plotted By: BD
Recommended: Chief, Survey Section	Checked By: AC	Checked By: AC
Approved:	Chief, Waterways Maintenance Section	

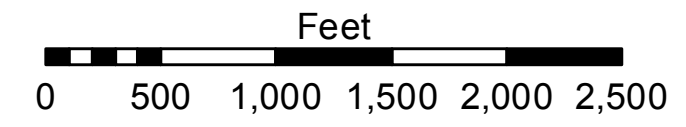
**MISSISSIPPI RIVER - B.R. TO GULF
BELMONT CROSSING
MD_30_BEL_20200520_CS
20 May 2020**



LEGEND			
--- Federal Navigation Channel	○ Cable Area	□ Borrow Area	0' and above
— Federal Navigation Center Line	▭ Placement Area	● Shoalest Sounding**	0' to -5'
— As-built Pipeline/Cable	⊠ Anchorage Area	☆ Beacon, General	-5' to -10'
⋯ Unconfirmed Pipeline/Cable	⊗ Obstruction Point	◆ Red Navigation Buoy	-10' to -20'
— Project Depth Contour	⚓ Wrecks-Submerged	◆ Green Navigation Buoy	-20' to -30'
			-30' to -35'
			-35' to -40'
			-40' to -45'
			-45' and below



LWRP: 1.2
Gage Reading: D:25.4 R:19.2 USED:21.8 NAVD
Sea Conditions: CALM
Vessel Name: OB-167
Survey Type: CONDITION
Sounding Frequency***: HIGH



NOTES:
Horizontal Coordinate System:
North American Datum of 1983 (NAD83), projected to the State Plane Coordinate System (SPCS), Louisiana South Zone. Distance units in U.S. Survey Feet.
Vertical Datum:
Soundings are shown in feet and indicate depths below Low Water Reference Plane 2007 (NAVD).
Distances on the Mississippi River, above and below Head of Passes are shown at 1 mile intervals.
The location of navigation aids are based on and provided by the U.S. Coast Guard and USACE crew.
2015 Aerial Photography data source: NAIP, USDA-FSA-APFO Aerial Photography Field Office.
Reference is N.O.A.A. Navigation Chart No. 11370.
** Shoalest Sounding per Quarter per Reach.
*** High frequency (200 kHz) survey data represents the first signal return at a sounding location and will include suspended solids, known as "fluff", if present. Low frequency (20 kHz) survey data normally penetrates through this "fluff" layer to depict elevations of consolidated bottom material. Low frequency accuracies may vary depending on channel conditions and bathymeter settings.

**Sheet Reference Number
30 of 97**