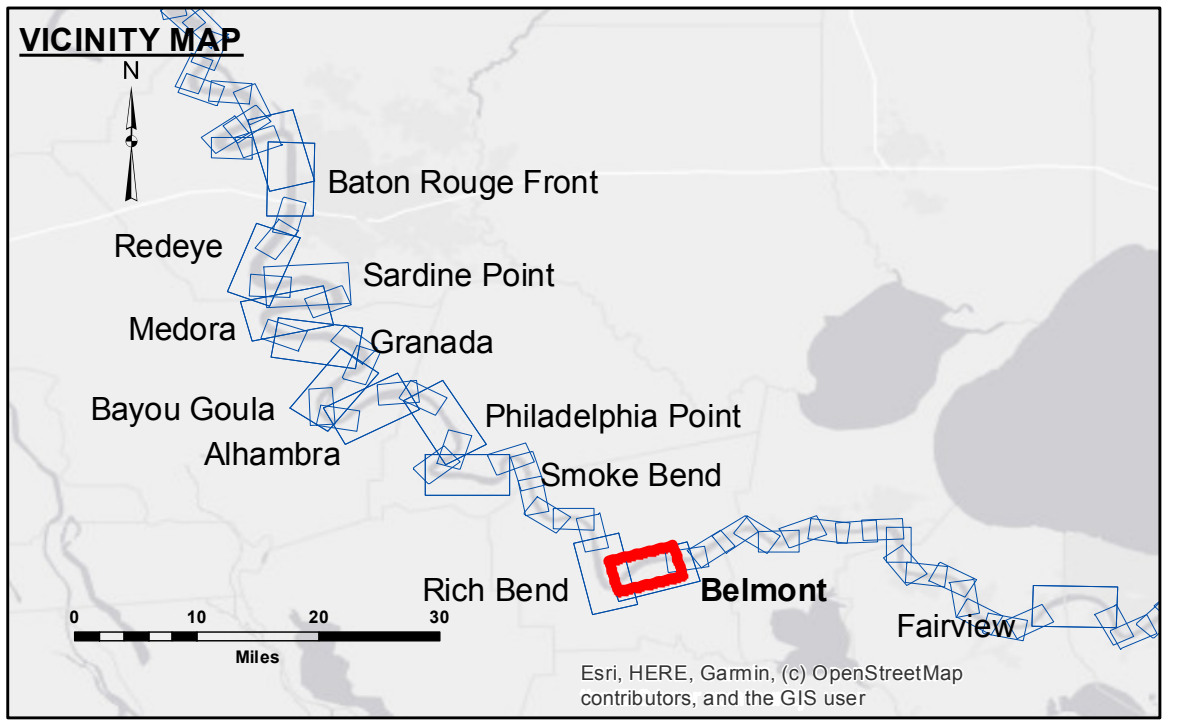




**DISCLAIMER:** The United States Government furnishes these data and the recipient accepts and uses them with the express understanding that the Government makes no warranty, expressed or implied, concerning the accuracy, completeness, reliability, usability or suitability for any particular purpose of the information. The user is responsible for the results of any use of the information. The application of the data for other than its intended purpose may result in injury or damage to persons or property. Data Collection: Hydrographic survey data is subject to change rapidly due to several factors including but not limited to changing hydrographic conditions, sedimentation, and other factors. The Army Corps of Engineers and its contractors are not responsible for the information or conditions which develop after the date of the survey. The information depicted on this map represents the results of a survey conducted on the date indicated. The information is considered to represent the general condition existing at that time.

|  |                       |                   |
|--|-----------------------|-------------------|
| U.S. ARMY CORPS OF ENGINEERS<br>NEW ORLEANS DISTRICT |                       |                   |
| Submitted:   | Surveyed By:<br>DS/JA | Plotted By:<br>AO |
| Recommended:<br>Chief, Survey Section                | Checked By:<br>AO     | Checked By:<br>AO |
| Approved:<br>Chief, Waterways Maintenance Section    |                       |                   |

**MISSISSIPPI RIVER - B.R. TO GULF  
BELMONT CROSSING  
MD\_30\_BEL\_20210316\_CS  
16 March 2021**



**LEGEND**

|                                  |                     |                         |                  |
|----------------------------------|---------------------|-------------------------|------------------|
| --- Federal Navigation Channel   | ○ Cable Area        | □ Borrow Area           | ■ 0' and above   |
| — Federal Navigation Center Line | □ Placement Area    | ● Shoalest Sounding**   | ■ 0' to -5'      |
| — As-built Pipeline/Cable        | □ Anchorage Area    | ☆ Beacon, General       | ■ -5' to -10'    |
| ..... Unconfirmed Pipeline/Cable | ⊗ Obstruction Point | ◆ Red Navigation Buoy   | ■ -10' to -20'   |
| — Project Depth Contour          | ⚓ Wrecks-Submerged  | ◆ Green Navigation Buoy | ■ -20' to -30'   |
|                                  |                     |                         | ■ -30' to -35'   |
|                                  |                     |                         | ■ -35' to -40'   |
|                                  |                     |                         | ■ -40' to -45'   |
|                                  |                     |                         | ■ -45' and below |

**NOTES:**

Horizontal Coordinate System:  
North American Datum of 1983 (NAD83), projected to the State Plane Coordinate System (SPCS), Louisiana South Zone. Distance units in U.S. Survey Feet.

Vertical Datum:  
Soundings are shown in feet and indicate depths below Low Water Reference Plane 2007 (NAVD).

Distances on the Mississippi River, above and below Head of Passes are shown at 1 mile intervals.

The location of navigation aids are based on and provided by the U.S. Coast Guard and USACE crew.

2015 Aerial Photography data source: NAIP, USDA-FSA-APFO Aerial Photography Field Office.

Reference is N.O.A. Navigation Chart No. 11370.

\*\* Shoalest Sounding per Quarter per Reach.

\*\*\* High frequency (200 kHz) survey data represents the first signal return at a sounding location and will include suspended solids, known as "fluff", if present. Low frequency (20 kHz) survey data normally penetrates through this "fluff" layer to depict elevations of consolidated bottom material. Low frequency accuracies may vary depending on channel conditions and fathometer settings.

LWRP: 1.2  
Gage Reading: D:22.1R:16.7 USED:19.0 NAVD  
Sea Conditions: CALM  
Vessel Name: VALENTOUR  
Survey Type: CS  
Sounding Frequency\*\*\*: HIGH

Feet  
0 500 1,000 1,500 2,000 2,500

**Sheet Reference Number  
30 of 97**