

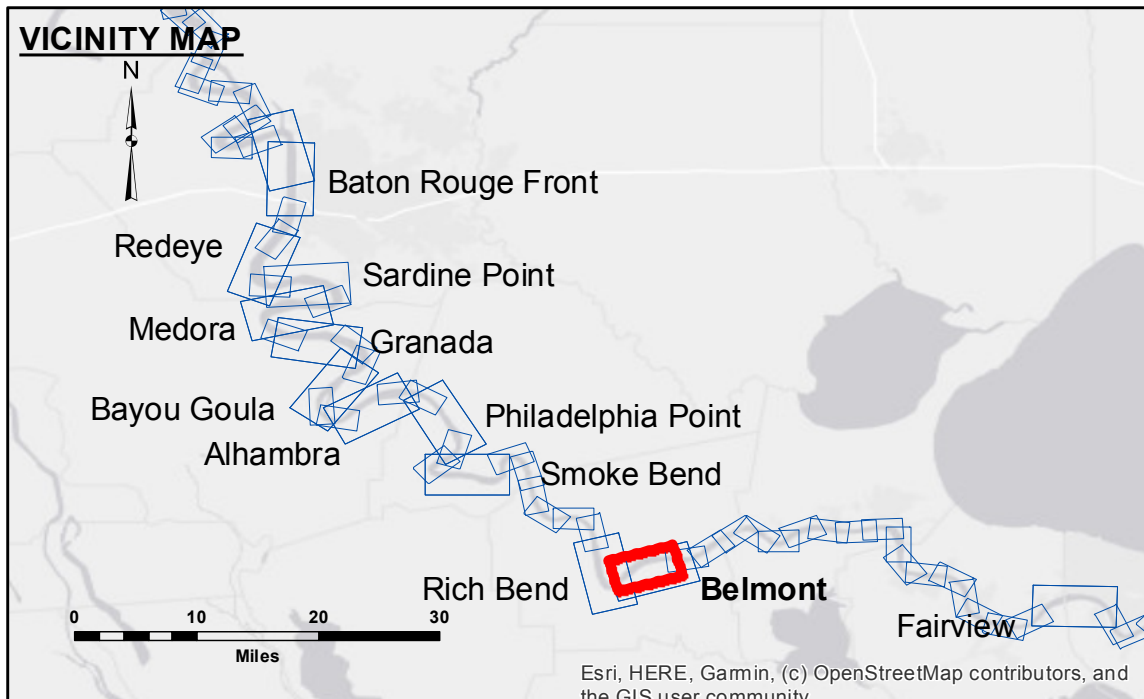


ACCESSORIES: The United States Government furnishes these data and the recipient accepts and uses them with the express understanding that they are not to be used for any purpose other than that for which they were originally intended. The user is responsible for the results of any application of the data for other than its intended purpose. Data furnished by the Corps of Engineers are subject to change without notice. The Corps of Engineers does not assume responsibility for changes in the hydrographic conditions which develop after the date of the survey. The information depicted on this map represents the results of a survey conducted by the Corps of Engineers and is not to be used for any purpose other than that for which it was intended.

Distribution Liability: The data represents the results of data collection for a specific project. The Corps of Engineers is not responsible for the results of any application of the data for other than its intended purpose. The user is responsible for the results of any application of the data for other than its intended purpose. Data furnished by the Corps of Engineers are subject to change without notice. The Corps of Engineers does not assume responsibility for changes in the hydrographic conditions which develop after the date of the survey. The information depicted on this map represents the results of a survey conducted by the Corps of Engineers and is not to be used for any purpose other than that for which it was intended.

U.S. ARMY CORPS OF ENGINEERS NEW ORLEANS DISTRICT		
Submitted:	Surveyed By: D/S/S/PS	Plotted By: AO
Recommended:	Chief, Survey Section	Checked By: AO
Approved:	Chief, Waterways Maintenance Section	

**MISSISSIPPI RIVER - B.R. TO GULF
BELMONT CROSSING
MD_30_BEL_20210607_CS
07 June 2021**



LEGEND			
--- Federal Navigation Channel	○ Cable Area	□ Borrow Area	0' and above
— Federal Navigation Center Line	■ Placement Area	● Shoalest Sounding**	0' to -5'
— As-built Pipeline/Cable	□ Anchorage Area	☆ Beacon, General	-5' to -10'
..... Unconfirmed Pipeline/Cable	⊗ Obstruction Point	◆ Red Navigation Buoy	-10' to -20'
— Project Depth Contour	✠ Wrecks-Submerged	◆ Green Navigation Buoy	-20' to -30'
			-30' to -35'
			-35' to -40'
			-40' to -45'
			-45' and below

LWRP: 1.2
Gage Reading: D:18.0 R:13.5 USED:15.5 NAVD
Sea Conditions: SMOOTH
Vessel Name: LAFOURCHE
Survey Type: CS
Sounding Frequency*:** HIGH

NOTES:
 Horizontal Coordinate System: North American Datum of 1983 (NAD83), projected to the State Plane Coordinate System (SPCS), Louisiana South Zone. Distance units in U.S. Survey Feet.
 Vertical Datum: Soundings are shown in feet and indicate depths below Low Water Reference Plane 2007 (NAVD).
 Distances on the Mississippi River, above and below Head of Passes are shown at 1 mile intervals.
 The location of navigation aids are based on and provided by the U.S. Coast Guard and USACE crew.
 2015 Aerial Photography data source: NAIP, USDA-FSA-APFO Aerial Photography Field Office.
 Reference is N.O.A.A. Navigation Chart No. 11370.
 ** Shoalest Sounding per Quarter per Reach.
 *** High frequency (200 kHz) survey data represents the first signal return at a sounding location and will include suspended solids, known as "fluff", if present. Low frequency (20 kHz) survey data normally penetrates through this "fluff" layer to depict elevations of consolidated bottom material. Low frequency accuracies may vary depending on channel conditions and bathymeter settings.

**Sheet Reference Number
30 of 97**