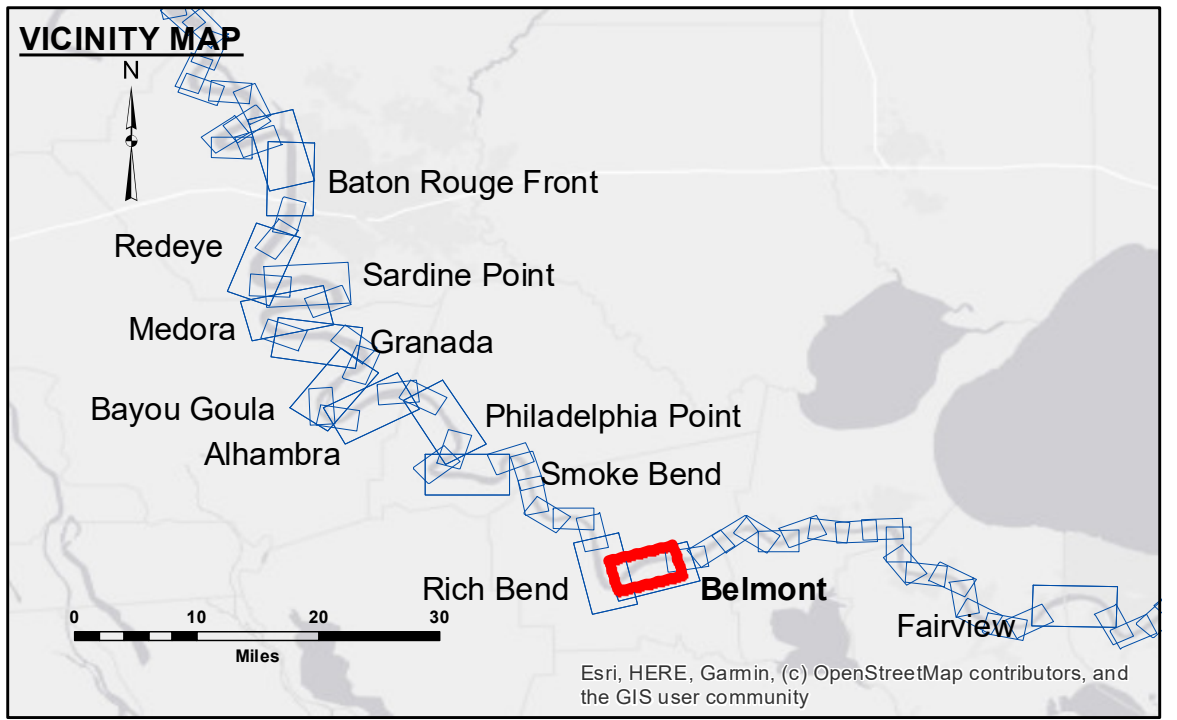




DISCLAIMER: The United States Government furnishes these data and the recipient accepts and uses them with the express understanding that the data are not intended for use in any way other than the purpose for which they were prepared, and that the Government makes no warranty, expressed or implied, concerning the accuracy, completeness, reliability, usability or suitability for any particular purpose of the data. The user is responsible for the results of the application of the data for other than its intended purpose. Data furnished by the United States Government are subject to change without notice and the recipient may not transfer these data to others without the express written consent of the United States Government. The information depicted on this map represents the results of a survey conducted on the date of the survey and is not intended to represent the general condition existing at that time.

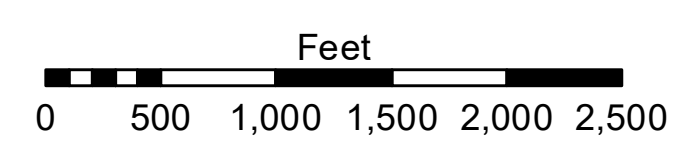
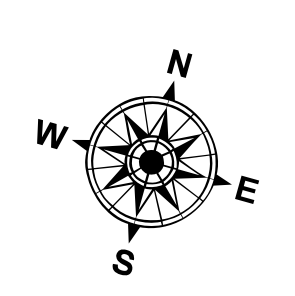
U.S. ARMY CORPS OF ENGINEERS NEW ORLEANS DISTRICT		
Submitted:	Surveyed By: RYLAND/SIMMONS	Plotted By: BD
Recommended:	Chief, Survey Section	Checked By: AC
Approved:	Chief, Waterways Maintenance Section	

**MISSISSIPPI RIVER - B.R. TO GULF
BELMONT CROSSING
MD_30_BEL_20230130_CS
30 January 2023**



LEGEND

--- Federal Navigation Channel	○ Cable Area	□ Borrow Area	0' and above
— Federal Navigation Center Line	▭ Placement Area	● Shoalest Sounding**	0' to -5'
— As-built Pipeline/Cable	⊠ Anchorage Area	☆ Beacon, General	-5' to -10'
⋯ Unconfirmed Pipeline/Cable	⊗ Obstruction Point	◆ Red Navigation Buoy	-10' to -20'
— Project Depth Contour	⚓ Wrecks-Submerged	◆ Green Navigation Buoy	-20' to -30'
			-30' to -35'
			-35' to -40'
			-40' to 45'
			-45' to 50'
			-50' and below



LWRP: 1.2
 Gage Reading: D: 14.7 R: 10.6 USED: 12.90 NAVD
 Sea Conditions: CALM
 Vessel Name: OB-189
 Survey Type: CS
 Sounding Frequency***: HIGH

NOTES:
 Horizontal Coordinate System:
 North American Datum of 1983 (NAD83), projected to the State Plane Coordinate System (SPCS), Louisiana South Zone. Distance units in U.S. Survey Feet.
 Vertical Datum:
 Soundings are shown in feet and indicate depths below Low Water Reference Plane 2007 (NAVD).
 Distances on the Mississippi River, above and below Head of Passes are shown at 1 mile intervals.
 The location of navigation aids are based on and provided by the U.S. Coast Guard and USACE crew.
 2015 Aerial Photography data source: NAIP, USDA-FSA-APFO Aerial Photography Field Office.
 Reference is N.O.A.A. Navigation Chart No. 11370.
 ** Shoalest Sounding per Quarter per Reach.
 *** High frequency (200 kHz) survey data represents the first signal return at a sounding location and will include suspended solids, known as "fluff", if present. Low frequency (20 kHz) survey data normally penetrates through this "fluff" layer to depict elevations of consolidated bottom material. Low frequency accuracies may vary depending on channel conditions and bathymeter settings.

**Sheet Reference Number
30 of 97**