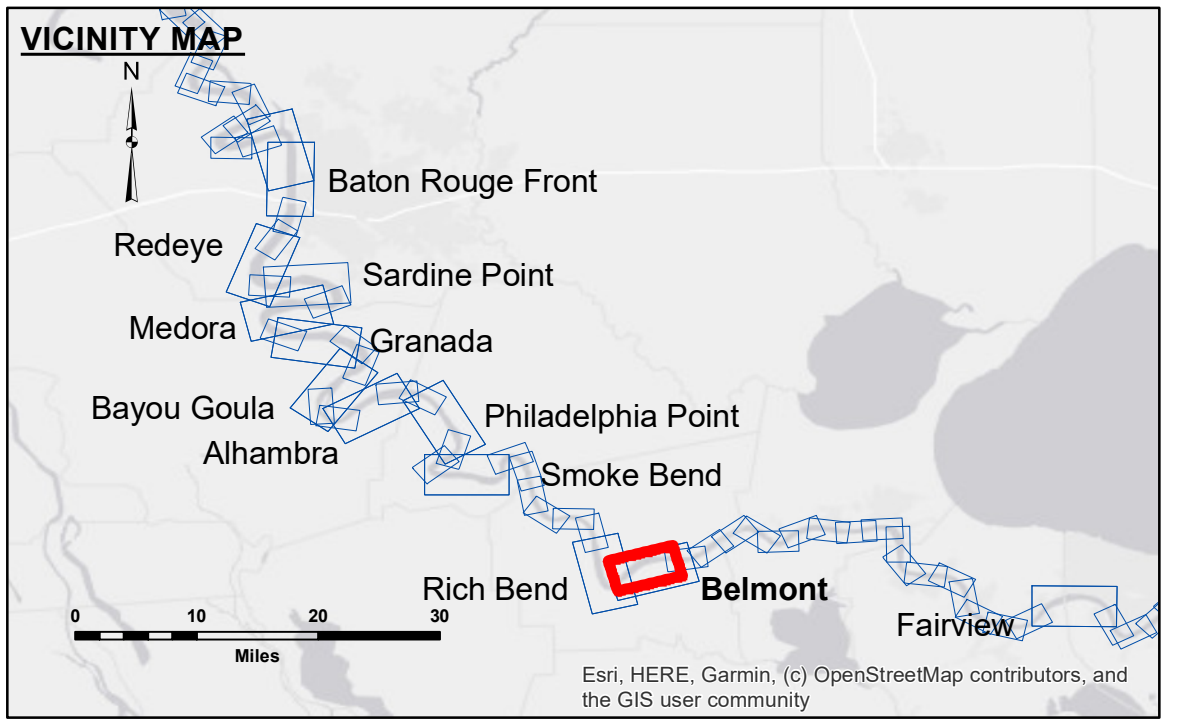




DISCLAIMER
 The information depicted on this map represents the results of a survey conducted by the U.S. Army Corps of Engineers. The user is responsible for the accuracy, completeness, and reliability of the data for their intended use. The user is not to be held liable for any damages or losses resulting from the use of this information. The information is provided as a service to the user and is not to be used for any other purpose. The user is responsible for the accuracy, completeness, and reliability of the data for their intended use. The user is not to be held liable for any damages or losses resulting from the use of this information. The information is provided as a service to the user and is not to be used for any other purpose.

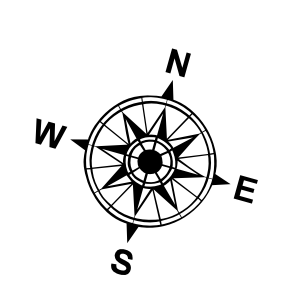
| | | |
|--|--------------------------------------|-------------------|
| U.S. ARMY CORPS OF ENGINEERS NEW ORLEANS DISTRICT | | |
| Submitted: | Surveyed By: RYLAND/SIMMONS | Plotted By: JH |
| Recommended: | Chief, Survey Section | Checked By: JH |
| Approved: | Chief, Waterways Maintenance Section | |

**MISSISSIPPI RIVER - B.R. TO GULF
 BELMONT CROSSING
 MD_30_BEL_20240924_CS
 24 September 2024**

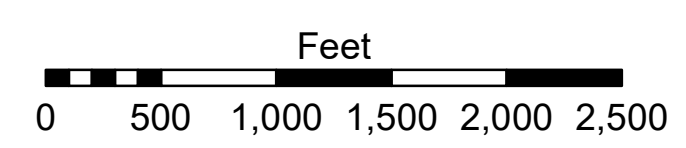


LEGEND

| | | | |
|----------------------------------|---------------------|-------------------------|----------------|
| --- Federal Navigation Channel | ○ Cable Area | □ Borrow Area | 0' and above |
| — Federal Navigation Center Line | □ Placement Area | ● Shoalest Sounding** | 0' to -5' |
| — As-built Pipeline/Cable | □ Anchorage Area | ☆ Beacon, General | -5' to -10' |
| Unconfirmed Pipeline/Cable | ⊗ Obstruction Point | ★ Red Navigation Buoy | -10' to -20' |
| — Project Depth Contour | ⚓ Wrecks-Submerged | ◆ Green Navigation Buoy | -20' to -30' |
| | | | -30' to -35' |
| | | | -35' to -40' |
| | | | -40' to 45' |
| | | | -45' to 50' |
| | | | -50' and below |



LWRP: 1.2
 Gage Reading: D:3.7 R:3.0 USED: 3.3 NAVD88
 Sea Conditions: CALM
 Vessel Name: M/V LAFORCHE
 Survey Type: CS
 Sounding Frequency***: HIGH



NOTES:
 Horizontal Coordinate System:
 North American Datum of 1983 (NAD83), projected to the State Plane
 Coordinate System (SPCS), Louisiana South Zone. Distance units in U.S. Survey Feet.
 Vertical Datum:
 Soundings are shown in feet and indicate depths below Low Water Reference Plane 2007 (NAVD).
 Distances on the Mississippi River, above and below Head of Passes are shown
 at 1 mile intervals.
 The location of navigation aids are base on and provided by the U.S. Coast Guard and USACE crew.
 2015 Aerial Photography data source: NAIP, USDA-FSA-APFO Aerial Photography Field Office.
 Reference is N.O.A. Navigation Chart No. 11370.
 ** Shoalest Sounding per Quarter per Reach.
 *** High frequency (200 kHz) survey data represents the first signal return at a sounding
 location and will include suspended solids, known as "fluff", if present. Low frequency (20 kHz)
 survey data normally penetrates through this "fluff" layer to depict elevations of consolidated bottom
 material. Low frequency accuracies may vary depending on channel conditions and bathymeter
 settings.

**Sheet
 Reference
 Number
 30 of 97**