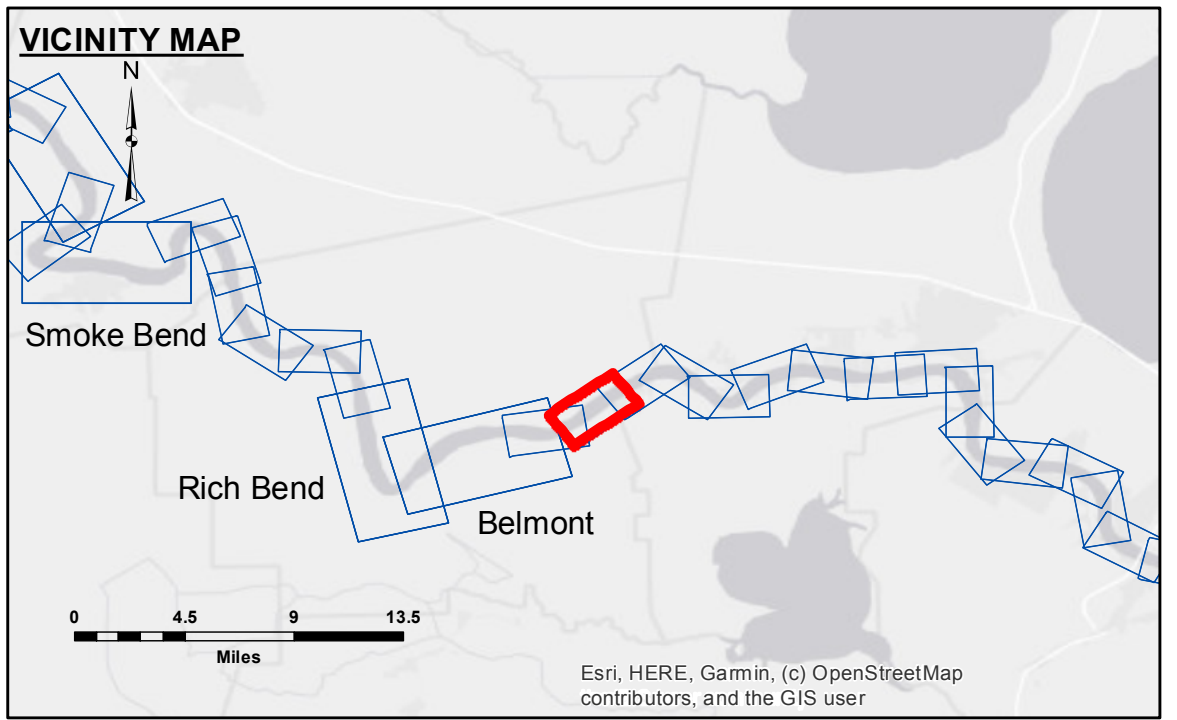


DISCLAIMER: The United States Government furnishes these data and the recipient accepts and uses them with the express understanding that the Government makes no warranty, expressed or implied, concerning the accuracy, completeness, reliability, usability or suitability for any particular purpose of the information. The user is responsible for the results of any use of the information, and the Government shall not be liable under any liability whatsoever to any person by reason of any use of the information. These data belong to the Government. Therefore the recipient may not transmit, disseminate, or otherwise use these data to others without also transmitting the disclaimer. The information depicted on this map represents the results of a hydrographic survey conducted by the U.S. Army Corps of Engineers. The information is not to be used for purposes other than those intended by the U.S. Army Corps of Engineers. The information is not to be used for purposes other than those intended by the U.S. Army Corps of Engineers. The information is not to be used for purposes other than those intended by the U.S. Army Corps of Engineers.

Submitted:	Surveyed By:	Plotted By:	Checked By:
	SPPS	AO	AO
Recommended:	Chief, Survey Section		
Approved:	Chief, Waterways Maintenance Section		

MISSISSIPPI RIVER - B.R. TO GULF GRANDVIEW REACH - SHEET 2 MD_32_GV2X_20210406_CS
06 April 2021



LEGEND

--- Federal Navigation Channel	○ Cable Area	■ Shoaling Area	■ 0' and above
— Federal Navigation Center Line	□ Placement Area	● Shoalest Sounding**	■ 0' to -5'
— As-built Pipeline/Cable	⊗ Anchorage Area	☆ Beacon, General	■ -5' to -10'
..... Unconfirmed Pipeline/Cable	⊗ Obstruction Point	◆ Red Navigation Buoy	■ -10' to -20'
— Project Depth Contour	⊗ Wrecks-Submerged	◆ Green Navigation Buoy	■ -20' to -30'
			■ -30' to -35'
			■ -35' to -40'
			■ -40' to 45'
			■ -45' and below

LWRP: 1.1
 Gage Reading: D:26.1R:19.7 USED:21.3 NAVD
 Sea Conditions: CHOP
 Vessel Name: OB-167
 Survey Type: CONDITION
 Sounding Frequency***: HIGH

NOTES:
 Horizontal Coordinate System: North American Datum of 1983 (NAD83), projected to the State Plane Coordinate System (SPCS), Louisiana South Zone. Distance units in U.S. Survey Feet.
 Vertical Datum: Soundings are shown in feet and indicate depths below Low Water Reference Plane 2007 (NAVD). Distances on the Mississippi River, above and below Head of Passes are shown at 1 mile intervals.
 The location of navigation aids are based on and provided by the U.S. Coast Guard and USACE crew. 2017 Aerial Photography data source: NAIP, USDA-FSA-APFO Aerial Photography Field Office.
 Reference is N.O.A. Navigation Chart No. 11370.
 ** Shoalest Sounding per Quarter per Reach.
 *** High frequency (200 kHz) survey data represents the first signal return at a sounding location and will include suspended solids, known as "fluff", if present. Low frequency (20 kHz) survey data normally penetrates through this "fluff" layer to depict elevations of consolidated bottom material. Low frequency accuracies may vary depending on channel conditions and bathymeter settings.

Sheet Reference Number
32 of 97

Revision Number:
4.1-20191105