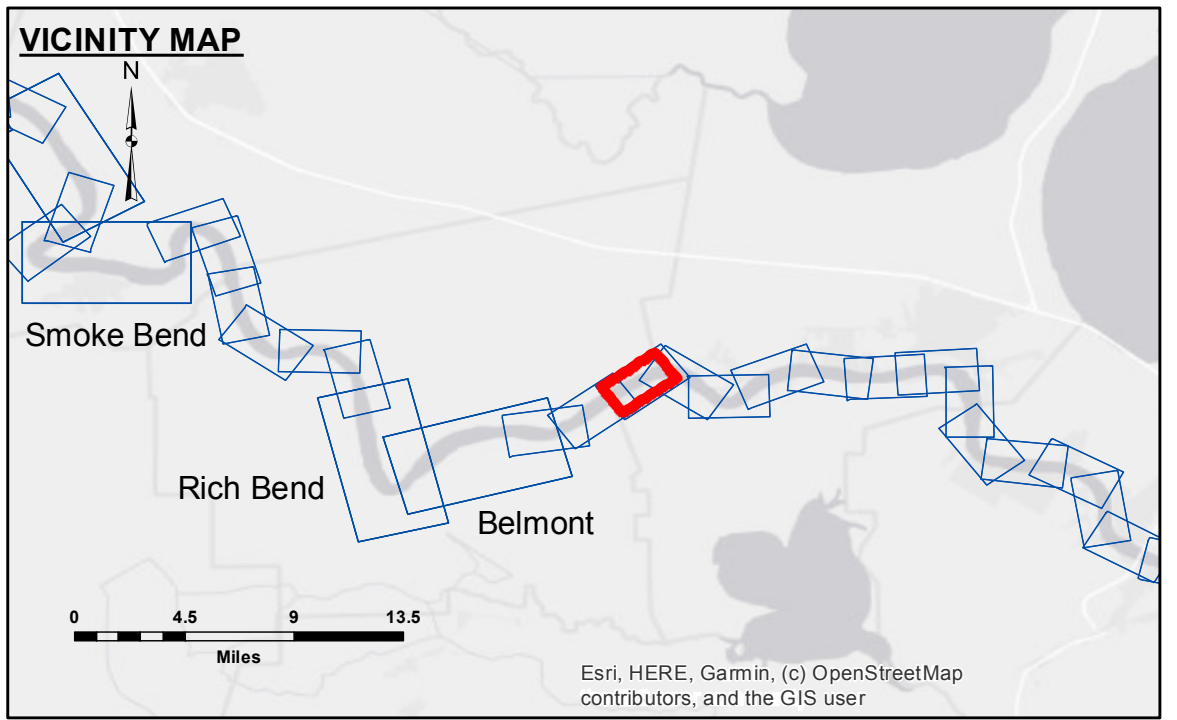


DISCLAIMER: The United States Government furnishes these data and the recipient accepts and uses them with the express understanding that the data are not warranted for any purpose other than that for which they were collected. The user is responsible for the results of any use of the data for other than the intended purpose. The application of the data for other than the intended purpose may result in injury or damage to persons or property. The user assumes all liability for any use of the data for other than the intended purpose. The information depicted on this map represents the results of a survey conducted by the United States Army Corps of Engineers and is not to be used for any purpose other than that for which it was collected. The user assumes all liability for any use of the data for other than the intended purpose.

| | |
|--|-------------------|
| U.S. ARMY CORPS OF ENGINEERS NEW ORLEANS DISTRICT | |
| Submitted: | Surveyed By: SPPS |
| Recommended: Chief, Survey Section | Plotted By: AO |
| Approved: Chief, Waterways Maintenance Section | Checked By: AO |

**MISSISSIPPI RIVER - B. R. TO GULF
GRANDVIEW REACH - SHEET 3
MD_33_GV3X_20210406_CS
06 April 2021**



| LEGEND | |
|----------------------------------|-------------------------|
| --- Federal Navigation Channel | ○ Cable Area |
| — Federal Navigation Center Line | □ Placement Area |
| — As-built Pipeline/Cable | □ Anchorage Area |
| Unconfirmed Pipeline/Cable | ⊗ Obstruction Point |
| — Project Depth Contour | ⚓ Wrecks-Submerged |
| ■ Shoaling Area | ★ Beacon, General |
| ● Shoalest Sounding** | ◆ Red Navigation Buoy |
| ○ 0' and above | ◆ Green Navigation Buoy |
| ○ 0' to -5' | |
| ○ -5' to -10' | |
| ○ -10' to -20' | |
| ○ -20' to -30' | |
| ○ -30' to -35' | |
| ○ -35' to -40' | |
| ○ -40' to -45' | |
| ○ -45' and below | |

LWRP: 1.1
Gage Reading: D:26.1R:19.7 USED:21.0 NAVD
Sea Conditions: CHOP
Vessel Name: OB-167
Survey Type: CONDITION
Sounding Frequency*:** HIGH

NOTES:
 Horizontal Coordinate System:
 North American Datum of 1983 (NAD83), projected to the State Plane Coordinate System (SPCS), Louisiana South Zone. Distance units in U.S. Survey Feet.
 Vertical Datum:
 Soundings are shown in feet and indicate depths below Low Water Reference Plane 2007 (NAVD).
 Distances on the Mississippi River, above and below Head of Passes are shown at 1 mile intervals.
 The location of navigation aids are based on and provided by the U.S. Coast Guard and USACE crew.
 2017 Aerial Photography data source: NAIP, USDA-FSA-APFO Aerial Photography Field Office.
 Reference is N.O.A.A. Navigation Chart No. 11370.
 ** Shoalest Sounding per Quarter per Reach.
 *** High frequency (200 kHz) survey data represents the first signal return at a sounding location and will include suspended solids, known as "fluff", if present. Low frequency (20 kHz) survey data normally penetrates through this "fluff" layer to depict elevations of consolidated bottom material. Low frequency accuracies may vary depending on channel conditions and bathymeter settings.

**Sheet Reference Number
33 of 97**

Revision Number:
4.1-20191105