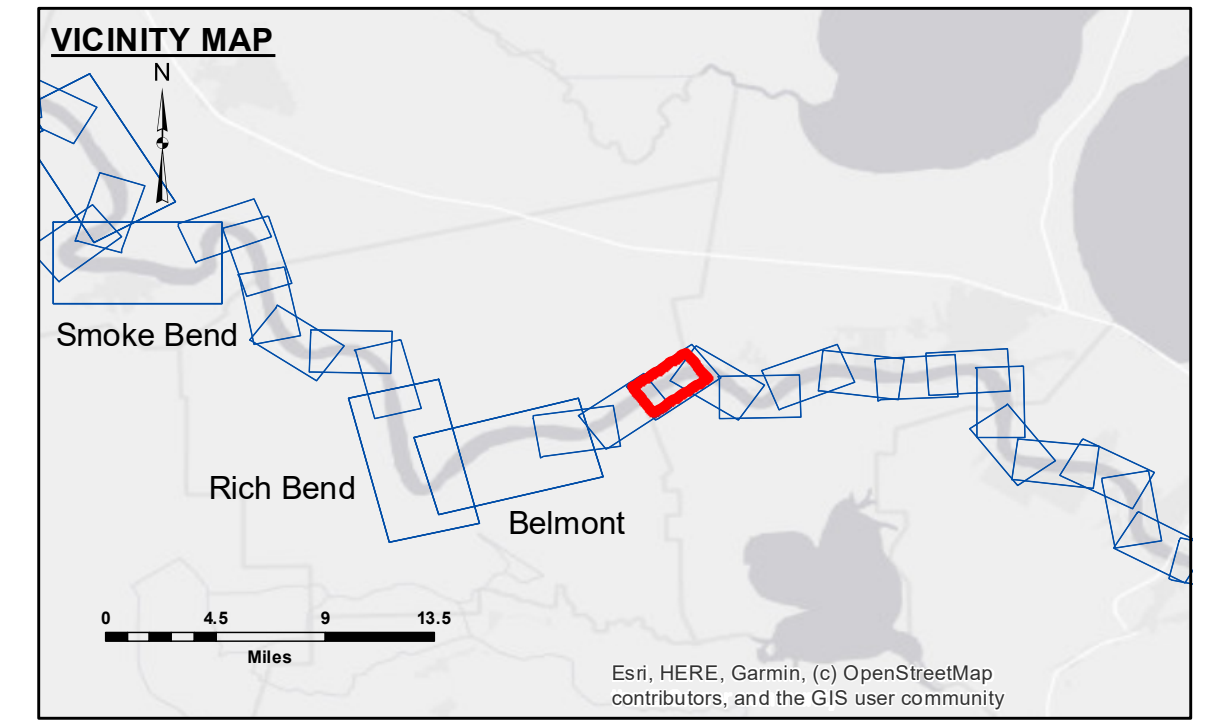


Accession: The United States Government furnishes these data and the recipient accepts and uses them with the express understanding that they are not to be used for any purpose other than that for which they were prepared or implied concerning the accuracy, completeness, reliability, or suitability for any particular purpose of the information. The user is responsible for the results of their use. The application of the data for other than its intended purpose is at the user's risk. The recipient may not transfer these data to others without the written approval of the Army Corps of Engineers. The recipient may not use the data for any purpose other than that for which they were prepared. The information depicted on this map represents the results of a survey conducted on the ground and is not to be considered a representation of the general condition existing at the time.

U.S. ARMY CORPS OF ENGINEERS NEW ORLEANS DISTRICT	
Submitted: RYLAND/SIMMONS	Plotted By: JH
Recommended: Chief, Survey Section	Checked By: JH
Approved: Chief, Waterways Maintenance Section	

**MISSISSIPPI RIVER - B. R. TO GULF
GRANDVIEW REACH - SHEET 3
MD_33_GV3X_20240326_CS
26 March 2024**

**Sheet Reference Number
33 of 97**



LEGEND	
--- Federal Navigation Channel	○ Cable Area
— Federal Navigation Center Line	□ Placement Area
— As-built Pipeline/Cable	⊗ Obstruction Point
..... Unconfirmed Pipeline/Cable	⚓ Wrecks-Submerged
— Project Depth Contour	★ Beacon, General
	◆ Red Navigation Buoy
	◇ Green Navigation Buoy
	■ Shoaling Area
	● Shoalest Sounding**
	■ 0' and above
	■ 0' to -5'
	■ -5' to -10'
	■ -10' to -20'
	■ -20' to -30'
	■ -30' to -35'
	■ -35' to -40'
	■ -40' to -45'
	■ -45' and below

LWRP: 1.1
Gage Reading: VRN RTK: 12.90 NAVD88
Sea Conditions: CALM
Vessel Name: LAFOURCHE
Survey Type: CS
Sounding Frequency*:** HIGH

NOTES:
 Horizontal Coordinate System:
 North American Datum of 1983 (NAD83), projected to the State Plane Coordinate System (SPCS), Louisiana South Zone. Distance units in U.S. Survey Feet.
 Vertical Datum:
 Soundings are shown in feet and indicate depths below Low Water Reference Plane 2007 (NAVD).
 Distances on the Mississippi River, above and below Head of Passes are shown at 1 mile intervals.
 The location of navigation aids are based on and provided by the U.S. Coast Guard and USACE crew.
 2017 Aerial Photography data source: NAIP, USDA-FSA-APFO Aerial Photography Field Office.
 Reference is N.O.A. Navigation Chart No. 11370.
 ** Shoalest Sounding per Quarter per Reach.
 *** High frequency (200 kHz) survey data represents the first signal return at a sounding location and will include suspended solids, known as "fluff", if present. Low frequency (20 kHz) survey data normally penetrates through this "fluff" layer to depict elevations of consolidated bottom material. Low frequency accuracies may vary depending on channel conditions and fathometer settings.