

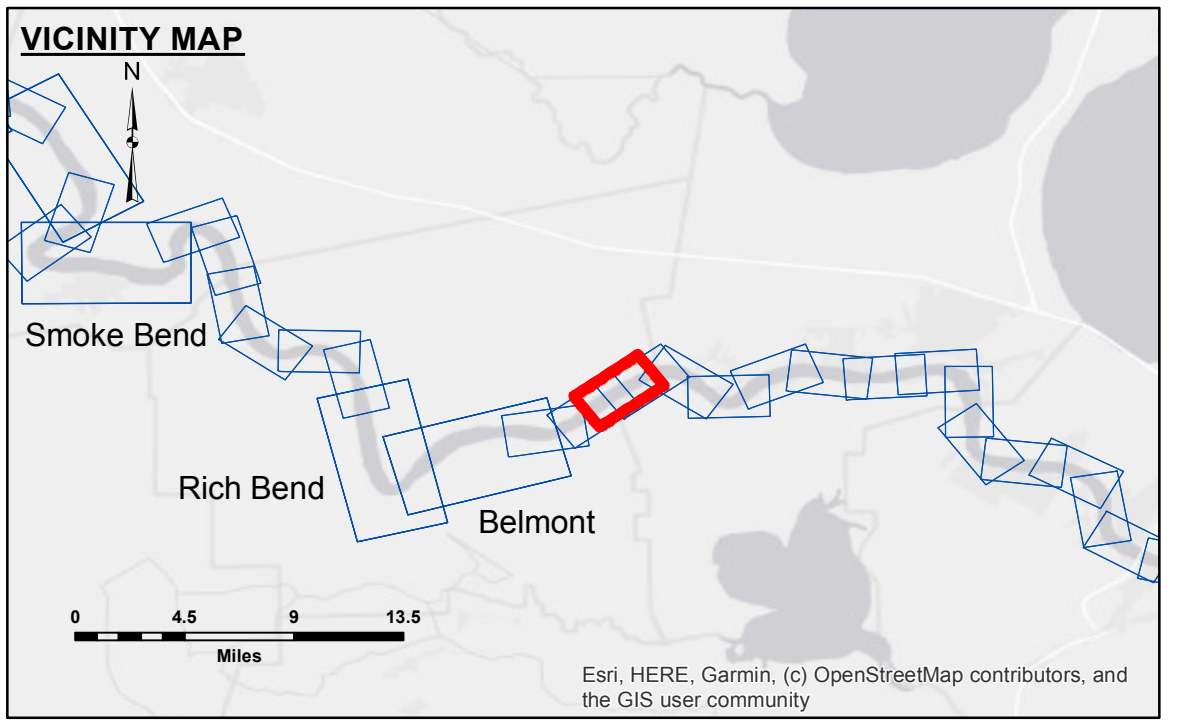
Access/Obstruction: The United States Government furnishes these data and the recipient accepts and uses them with the express understanding that they are not to be used for any purpose other than that for which they were prepared, or implied concerning the accuracy, completeness, reliability, usability or suitability, for any particular purpose of the recipient. The user is responsible for the results of their use. The application of the data for other than its intended purpose is at the user's risk.

Data Constraints: Hydrographic survey data is subject to change rapidly due to several factors including but not limited to: changing bathymetry, sedimentation, and other factors. The user is responsible for the results of their use. The application of the data for other than its intended purpose is at the user's risk.

Disclaimer: The information depicted on this map represents the results of a survey conducted on the ground. The information is not to be used for any purpose other than that for which it was prepared. The user is responsible for the results of their use. The application of the data for other than its intended purpose is at the user's risk.

Submitted:	Surveyed By:	Plotted By:	Checked By:
	RYLAND/HOSHMAN	AO	AO
Recommended:	Chief, Survey Section		
Approved:	Chief, Waterways Maintenance Section		

MISSISSIPPI RIVER - B. R. TO GULF GRANDVIEW REACH - SHEET 3
MD_33_GV3_20200805_PR
05 August 2020



LEGEND		LEGEND		LEGEND	
--- Federal Navigation Channel	○ Cable Area	■ Shoaling Area	■ 0' and above	⊙ Green Navigation Buoy	■ -45' and below
— Federal Navigation Center Line	□ Placement Area	● Shoalest Sounding**	■ 0' to -5'		
— As-built Pipeline/Cable	□ Anchorage Area	★ Beacon, General	■ -5' to -10'		
..... Unconfirmed Pipeline/Cable	⊗ Obstruction Point	◆ Red Navigation Buoy	■ -10' to -20'		
— Project Depth Contour	⚓ Wrecks-Submerged	◆ Green Navigation Buoy	■ -20' to -30'		
			■ -30' to -35'		
			■ -35' to -40'		
			■ -40' to 45'		
			■ -45' and below		

LWRP: 1.1
Gage Reading: D:7.2R:5.4 USED:5.9 NAVD
Sea Conditions: CALM
Vessel Name: M/V OB189
Survey Type: CONDITION
Sounding Frequency*:** HIGH

NOTES:
 Horizontal Coordinate System:
 North American Datum of 1983 (NAD83), projected to the State Plane Coordinate System (SPCS), Louisiana South Zone. Distance units in U.S. Survey Feet.
 Vertical Datum:
 Soundings are shown in feet and indicate depths below Low Water Reference Plane 2007 (NAVD).
 Distances on the Mississippi River, above and below Head of Passes are shown at 1 mile intervals.
 The location of navigation aids are base on and provided by the U.S. Coast Guard and USACE crew.
 2017 Aerial Photography data source: NAIP, USDA-FSA-APFO Aerial Photography Field Office.
 Reference is N.O.A.A. Navigation Chart No. 11370.
 ** Shoalest Sounding per Quarter per Reach.
 *** High frequency (200 kHz) survey data represents the first signal return at a sounding location and will include suspended solids, known as "fluff", if present. Low frequency (20 kHz) survey data normally penetrates through this "fluff" layer to depict elevations of consolidated bottom material. Low frequency accuracies may vary depending on channel conditions and fathometer settings.

Sheet Reference Number
33 of 97

Revision Number:
 4.1-20191115