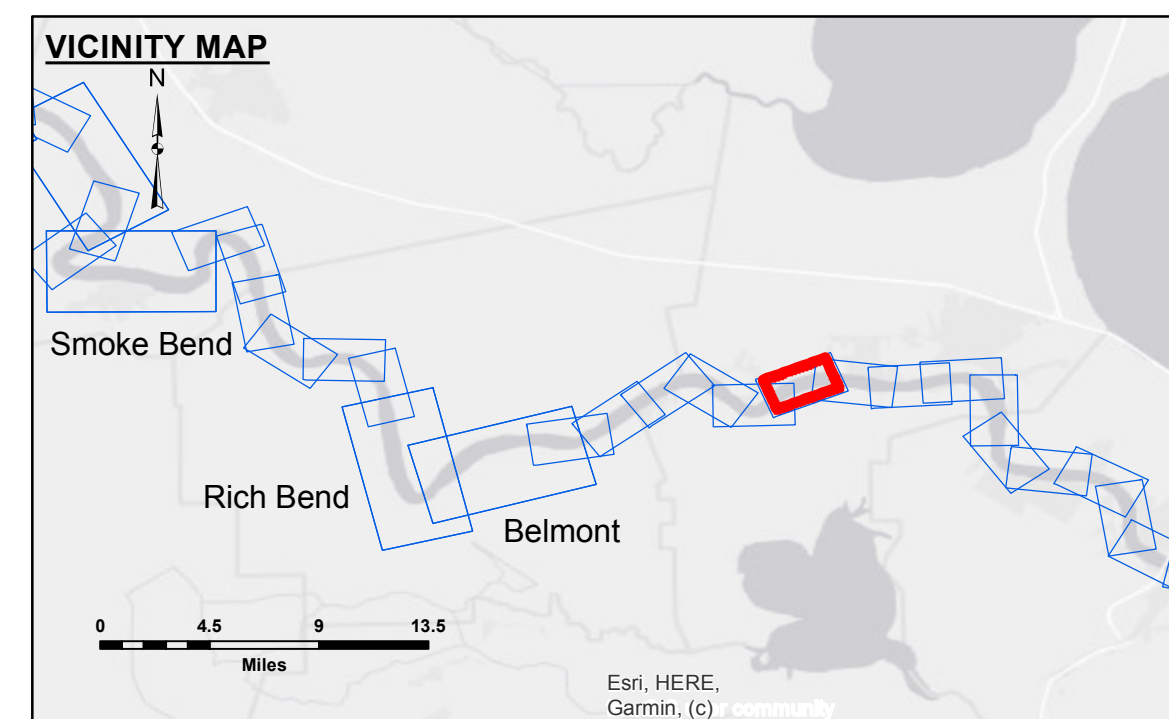


Obstruction at RM 140.5 (9/2/2021)  
 Latitude = 30°2'32.6"N  
 Longitude = 90°35'57"W  
 Shoalest Elevation = -73.3' LWRP



**LEGEND**

--- Federal Navigation Channel	○ Cable Area	■ Shoaling Area	■ 0' and above
— Federal Navigation Center Line	□ Placement Area	● Shoalest Sounding**	■ 0' to -5'
— As-built Pipeline/Cable	□ Anchorage Area	★ Beacon, General	■ -5' to -10'
..... Unconfirmed Pipeline/Cable	⊗ Obstruction Point	◆ Red Navigation Buoy	■ -10' to -20'
— Project Depth Contour	★ Wrecks-Submerged	◆ Green Navigation Buoy	■ -20' to -30'
			■ -30' to -35'
			■ -35' to -40'
			■ -40' to 45'
			■ -45' and below

**NOTES:**

Horizontal Coordinate System:  
 North American Datum of 1983 (NAD83), projected to the State Plane Coordinate System (SPCS), Louisiana South Zone. Distance units in U.S. Survey Feet.

Vertical Datum:  
 Soundings are shown in feet and indicate depths below Low Water Reference Plane 2007 (NAVD).

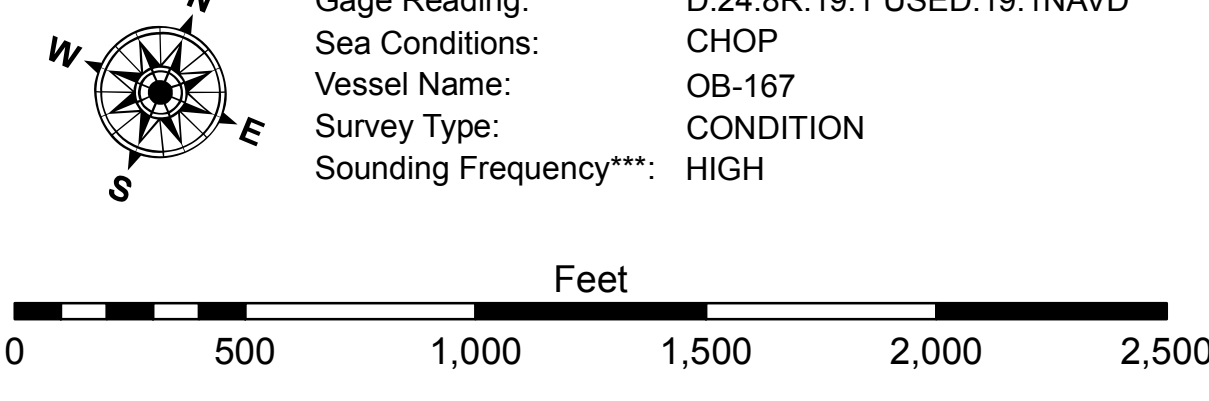
Distances on the Mississippi River, above and below Head of Passes are shown at 1 mile intervals.

The location of navigation aids are base on and provided by the U.S. Coast Guard and USACE crew.  
 2017 Aerial Photography data source: NAIP, USDA-FSA-APFO Aerial Photography Field Office.

Reference is N.O.A. Navigation Chart No. 11370.  
 \*\* Shoalest Sounding per Quarter per Reach.

\*\*\* High frequency (200 kHz) survey data represents the first signal return at a sounding location and will include suspended solids, known as "fluff", if present. Low frequency (20 kHz) survey data normally penetrates through this "fluff" layer to depict elevations of consolidated bottom material. Low frequency accuracies may vary depending on channel conditions and fathometer settings.

LWRP: 1.0  
 Gage Reading: D:24.8R:19.1 USED:19.1NAVD  
 Sea Conditions: CHOP  
 Vessel Name: OB-167  
 Survey Type: CONDITION  
 Sounding Frequency\*\*\*: HIGH



The United States Government furnishes the express warranty that the data shown on this chart were obtained from reliable sources and that the information depicted is true and correct to the best of our knowledge and belief. The user of this chart is advised that the data shown on this chart are not to be used for any purpose other than that for which they were intended. The user is responsible for the accuracy, completeness, and timeliness of the data shown on this chart. The user is advised that the data shown on this chart are not to be used for any purpose other than that for which they were intended. The user is responsible for the accuracy, completeness, and timeliness of the data shown on this chart.

Submitted:	Checked By:
Recommended:	Checked By:
Approved:	Checked By:

U.S. ARMY CORPS OF ENGINEERS  
 NEW ORLEANS DISTRICT

MISSISSIPPI RIVER - B. R. TO GULF  
 RESERVE - SHEET 1  
 MD\_36\_REIX\_20210330\_CS  
 30 March 2021

Sheet Reference Number  
 36 of 97

Revision Number:  
 4.1-20191105