

Obstruction at RM 125.5 (9/5/2021)
 Latitude = 29 59 25.8 N
 Longitude = 90 24 16.5 W
 Shoalest Elevation = -51.3' LWRP

Obstruction at RM 125 (9/3/2021)
 Latitude = 29 59 05.3 N
 Longitude = 90 23 56.8 W
 Shoalest Elevation = -77.1' LWRP

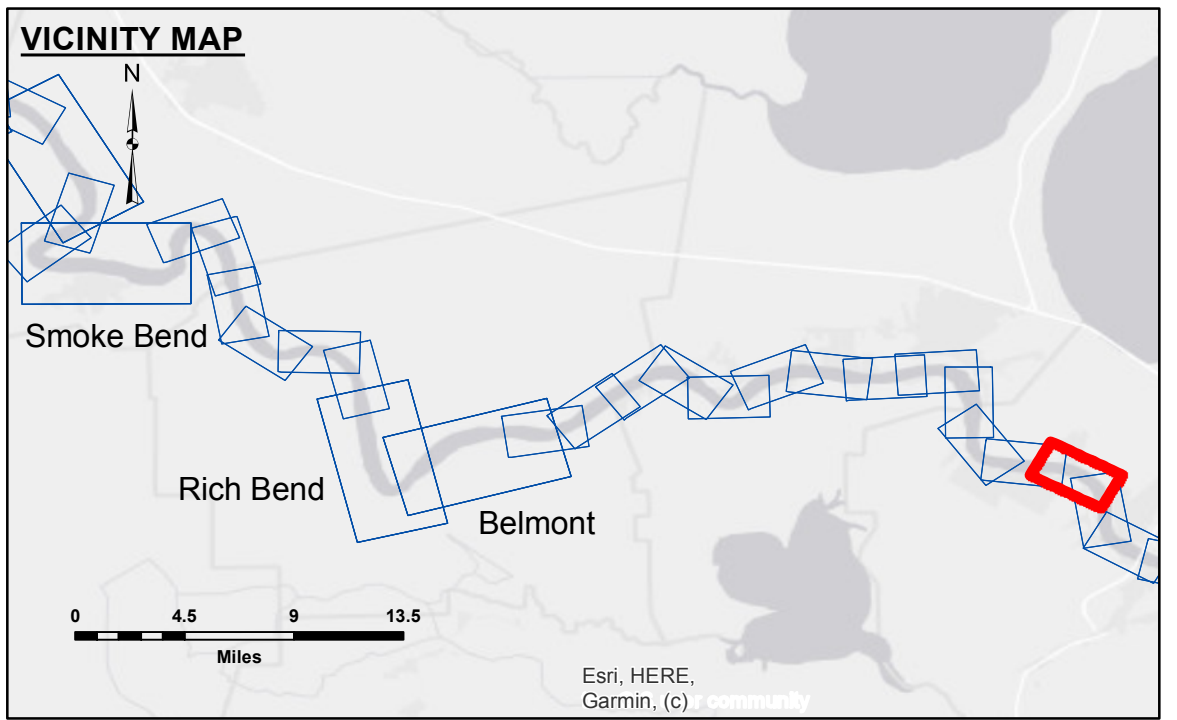


DISCLAIMER
 The information depicted on this map represents the results of a survey conducted by the United States Government. The user of this information is advised that the United States Government makes no warranty, expressed or implied, concerning the accuracy, completeness, or suitability of the information for any particular purpose. The user of this information is advised that the United States Government is not liable for any damages, including but not limited to, direct, indirect, or consequential damages, arising from the use of this information. The user of this information is advised that the United States Government is not responsible for any errors or omissions in this information. The user of this information is advised that the United States Government is not responsible for any changes in the information after the date of publication. The user of this information is advised that the United States Government is not responsible for any changes in the information after the date of publication. The user of this information is advised that the United States Government is not responsible for any changes in the information after the date of publication.

Submitted:	Surveyed By:	SPPM
Recommended:	Plotted By:	AO
Approved:	Checked By:	AO

Other: Waterways Maintenance Section

MISSISSIPPI RIVER - B. R. TO GULF
 HAHNVILLE
 MD_43_HANX_20210324_CS
 24 March 2021



LEGEND	
--- Federal Navigation Channel	○ Cable Area
— Federal Navigation Center Line	□ Placement Area
— As-built Pipeline/Cable	□ Anchorage Area
..... Unconfirmed Pipeline/Cable	⊗ Obstruction Point
— Project Depth Contour	★ Wrecks-Submerged
■ Shoaling Area	★ Beacon, General
● Shoalest Sounding**	◆ Red Navigation Buoy
○ 0' and above	◆ Green Navigation Buoy
○ 0' to -5'	
○ -5' to -10'	
○ -10' to -20'	
○ -20' to -30'	
○ -30' to -35'	
○ -35' to -40'	
○ -40' to -45'	
○ -45' and below	

LWRP: 0.9
 Gage Reading: R:18.7NO:12.8 USED:16.4 NAVD
 Sea Conditions: CHOP
 Vessel Name: OB-169
 Survey Type: CONDITION
 Sounding Frequency***: HIGH

Feet
 0 500 1,000 1,500 2,000 2,500

NOTES:
 Horizontal Coordinate System:
 North American Datum of 1983 (NAD83), projected to the State Plane Coordinate System (SPCS), Louisiana South Zone. Distance units in U.S. Survey Feet.
 Vertical Datum:
 Soundings are shown in feet and indicate depths below Low Water Reference Plane 2007 (NAVD).
 Distances on the Mississippi River, above and below Head of Passes are shown at 1 mile intervals.
 The location of navigation aids are based on and provided by the U.S. Coast Guard and USACE crew.
 2017 Aerial Photography data source: NAIP, USDA-FSA-APFO Aerial Photography Field Office.
 Reference is N.O.A. Navigation Chart No. 11370.
 ** Shoalest Sounding per Quarter per Reach.
 *** High frequency (200 kHz) survey data represents the first signal return at a sounding location and will include suspended solids, known as "fluff", if present. Low frequency (20 kHz) survey data normally penetrates through this "fluff" layer to depict elevations of consolidated bottom material. Low frequency accuracies may vary depending on channel conditions and fathometer settings.

Sheet Reference Number
 43 of 97
 Revision Number:
 4.1-20191105