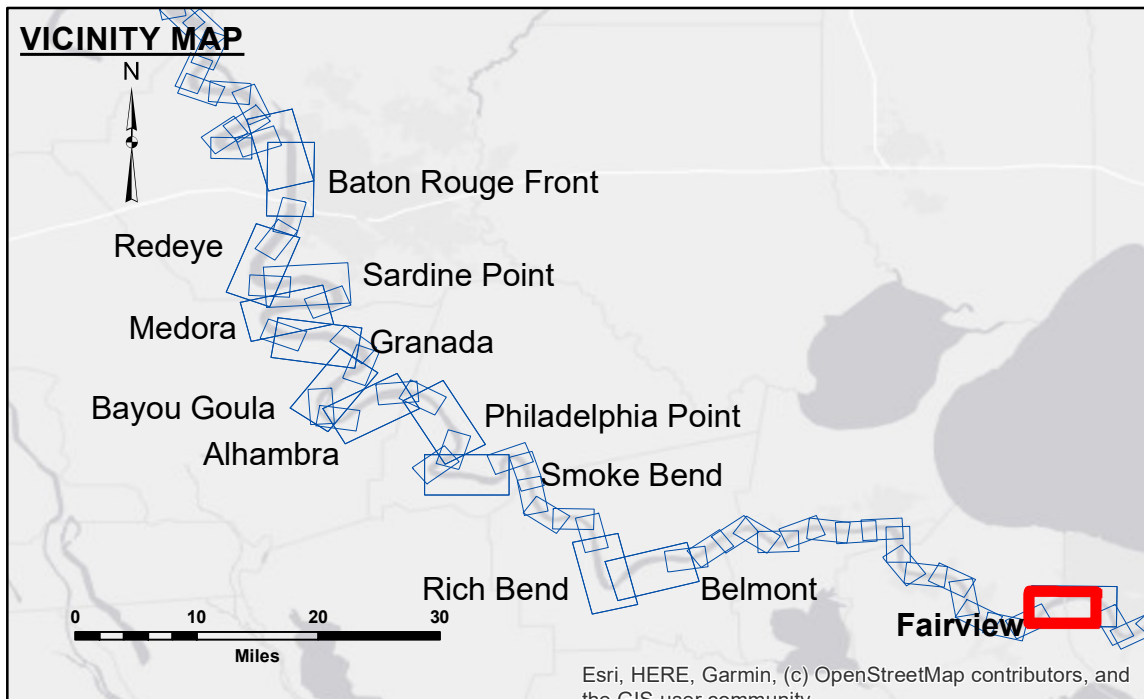


Access/Consent: The United States Government (USG) makes these data and the recipient accepts and uses them with the express understanding that the USG does not warrant the accuracy, reliability, usability or suitability for any particular purpose of the data. The recipient agrees to indemnify the USG from any liability whatsoever to any person by reason of any use of these data. These data are provided to the recipient under a license that is subject to the terms and conditions of the USG's Standard Form 63 (SF 63) contract. The recipient may not transfer these data to others without also transferring the license. The information depicted on this map represents the results of a survey conducted by the USG and is not to be considered a representation of the general condition existing at that time.

Access/Consent: The United States Government (USG) makes these data and the recipient accepts and uses them with the express understanding that the USG does not warrant the accuracy, reliability, usability or suitability for any particular purpose of the data. The recipient agrees to indemnify the USG from any liability whatsoever to any person by reason of any use of these data. These data are provided to the recipient under a license that is subject to the terms and conditions of the USG's Standard Form 63 (SF 63) contract. The recipient may not transfer these data to others without also transferring the license. The information depicted on this map represents the results of a survey conducted by the USG and is not to be considered a representation of the general condition existing at that time.

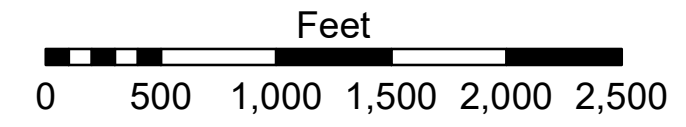
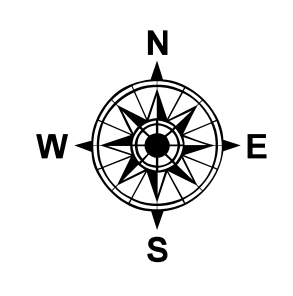
U.S. ARMY CORPS OF ENGINEERS NEW ORLEANS DISTRICT		
Submitted:	Surveyed By: SPPM	Plotted By: BD
Recommended:	Chief, Survey Section	Checked By: AC
Approved:	Chief, Waterways Maintenance Section	

**MISSISSIPPI RIVER - B.R. TO GULF
FAIRVIEW CROSSING
MD_48_FRVX_20181004_CS
04 October 2018**



LEGEND	
--- Federal Navigation Channel	○ Cable Area
— Federal Navigation Center Line	□ Placement Area
— As-built Pipeline/Cable	□ Anchorage Area
..... Unconfirmed Pipeline/Cable	⊗ Obstruction Point
— Project Depth Contour	★ Wrecks-Submerged
□ Borrow Area	★ Beacon, General
● Shoalest Sounding**	◆ Red Navigation Buoy
◆ Green Navigation Buoy	

0' and above	0' to -5'
-5' to -10'	-10' to -20'
-20' to -30'	-30' to -35'
-35' to -40'	-40' to -45'
-45' and below	



LWRP: 1.1
 Gage Reading: R:13.22 NO:9.33 USED:10.70 NGVD
 Sea Conditions: CALM
 Vessel Name: OB-167
 Survey Type: CONDITION
 Sounding Frequency***: HIGH

NOTES:
 Horizontal Coordinate System:
 North American Datum of 1983 (NAD83), projected to the State Plane Coordinate System (SPCS), Louisiana South Zone. Distance units in U.S. Survey Feet.
 Vertical Datum:
 Soundings are shown in feet and indicate depths below Low Water Reference Plane 2007 (NGVD).
 Distances on the Mississippi River, above and below Head of Passes are shown at 1 mile intervals.
 The location of navigation aids are based on and provided by the U.S. Coast Guard and USACE crew.
 2015 Aerial Photography data source: NAIP, USDA-FSA-APFO Aerial Photography Field Office.
 Reference is N.O.A. Navigation Chart No. 11370.
 ** Shoalest Sounding per Quarter per Reach.
 *** High frequency (200 kHz) survey data represents the first signal return at a sounding location and will include suspended solids, known as "fluff", if present. Low frequency (20 kHz) survey data normally penetrates through this "fluff" layer to depict elevations of consolidated bottom material. Low frequency accuracies may vary depending on channel conditions and fathometer settings.

**Sheet Reference Number
48 of 97**