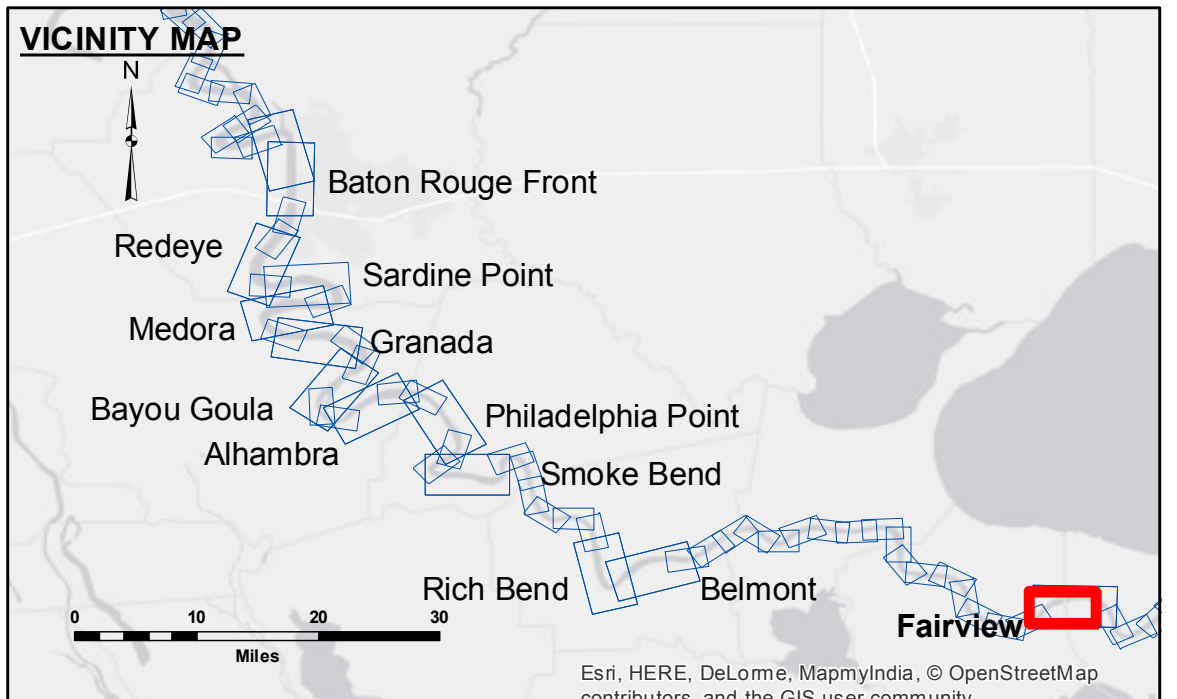


Accession: The United States Government furnishes these data and the recipient accepts and uses them with the express understanding that the data are not to be used for any purpose other than that for which they were originally prepared. The user is responsible for the results of any use of the data for other than its intended purpose.

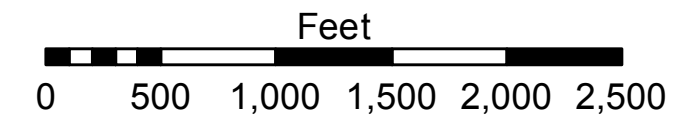
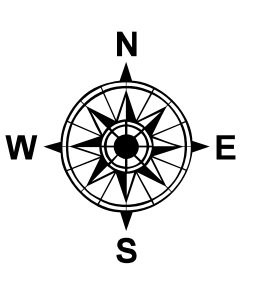
Disclaimer: Hydrographic survey data is subject to change rapidly due to several factors including but not limited to dredging, sedimentation, and channel migration. The user is responsible for the results of any use of the data for other than its intended purpose. The information depicted on this map represents the results of a survey conducted on the date of the survey. It is not intended to represent the general condition existing at this time.

U.S. ARMY CORPS OF ENGINEERS NEW ORLEANS DISTRICT		
Submitted:	Surveyed By: SPS/DJS/SOUK	Plotted By: BD
Recommended:	Checked By: AC	Checked By: AC
Approved:	Chief, Waterways Maintenance Section	

**MISSISSIPPI RIVER - B.R. TO GULF
FAIRVIEW CROSSING
MD_48_FRV_20160928
28 September 2016**



LEGEND		0' and above
--- Federal Navigation Channel	○ Cable Area	0' to -5'
— Federal Navigation Center Line	□ Placement Area	-5' to -10'
— As-built Pipeline/Cable	□ Anchorage Area	-10' to -20'
..... Unconfirmed Pipeline/Cable	⊗ Obstruction Point	-20' to -30'
— Project Depth Contour	★ Beacon, General	-30' to -35'
	◆ Red Navigation Buoy	-35' to -40'
	◆ Green Navigation Buoy	-40' to 45'
		-45' and below
	□ Borrow Area	
	● Shoalest Sounding**	
	★ Wrecks-Submerged	



LWRP: 1.1
 Gage Reading: R:7.5 NO:5.3 USED:6.1NGVD
 Sea Conditions: CALM
 Vessel Name: M/V LAFOURCHE
 Survey Type: CONDITION
 Sounding Frequency***: HIGH

NOTES:
 Horizontal Coordinate System:
 North American Datum of 1983 (NAD83), projected to the State Plane Coordinate System (SPCS), Louisiana South Zone. Distance units in U.S. Survey Feet.
 Vertical Datum:
 Soundings are shown in feet and indicate depths below Low Water Reference Plane 2007 (NGVD).
 Distances on the Mississippi River, above and below Head of Passes are shown at 1 mile intervals.
 The location of navigation aids are based on and provided by the U.S. Coast Guard and USACE crew.
 2010 Aerial Photography data source: NAIP, USDA-FSA-APFO Aerial Photography Field Office.
 Reference is N.O.A. Navigation Chart No. 11370.
 ** Shoalest Sounding per Quarter per Reach.
 *** High frequency (200 kHz) survey data represents the first signal return at a sounding location and will include suspended solids, known as "fluff", if present. Low frequency (20 kHz) survey data normally penetrates through this "fluff" layer to depict elevations of consolidated bottom material. Low frequency accuracies may vary depending on channel conditions and fathometer settings.

**Sheet Reference Number
48 of 97**