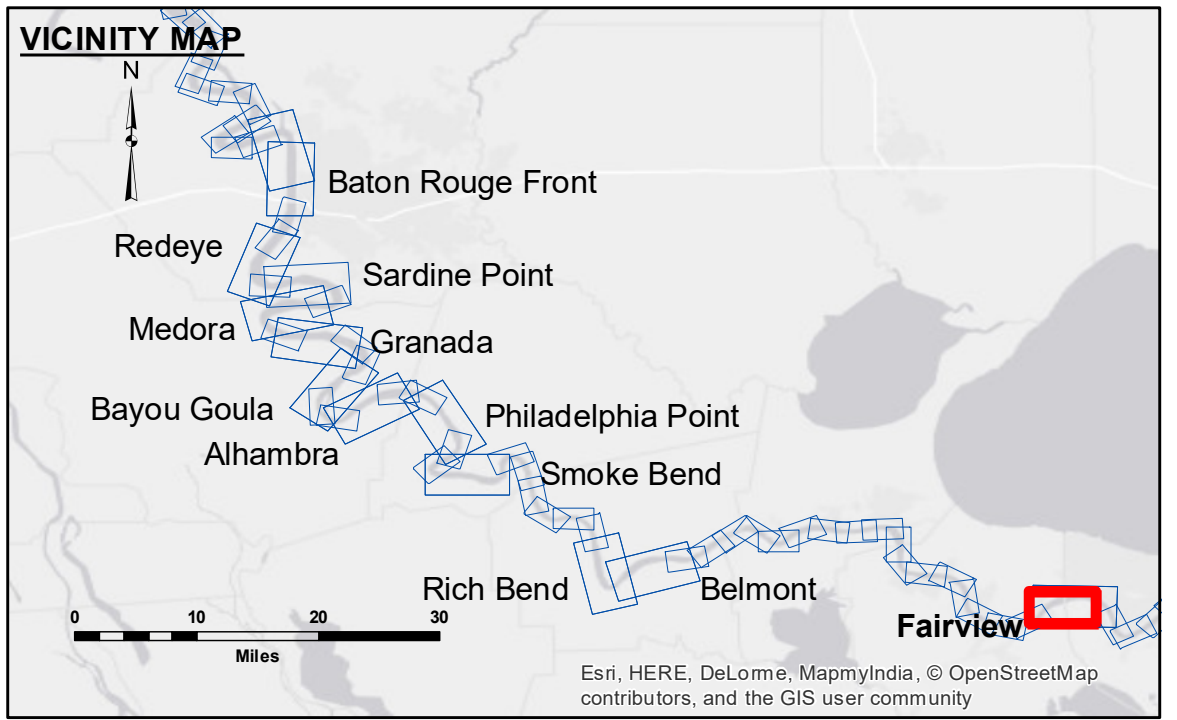


**DISCLAIMER:** The data represents the results of data collection for a specific project. The data is not intended for use for any other purpose. The user is responsible for the results of the data. The data is not intended for use for any other purpose. The user is responsible for the results of the data. The data is not intended for use for any other purpose. The user is responsible for the results of the data.

U.S. ARMY CORPS OF ENGINEERS NEW ORLEANS DISTRICT		
Submitted:	Surveyed By: SPPM	Plotted By: BD
Recommended: Chief Survey Section	Checked By: AC	Checked By: AC
Approved:	Chief Waterways Maintenance Section	



LEGEND	
--- Federal Navigation Channel	● Cable Area
— Federal Navigation Center Line	□ Placement Area
— As-built Pipeline/Cable	□ Anchorage Area
..... Unconfirmed Pipeline/Cable	⊗ Obstruction Point
— Project Depth Contour	★ Wrecks-Submerged
□ Borrow Area	★ Shoalest Sounding**
★ Beacon, General	★ Red Navigation Buoy
★ Green Navigation Buoy	

**NOTES:**

Horizontal Coordinate System:  
North American Datum of 1983 (NAD83), projected to the State Plane Coordinate System (SPCS), Louisiana South Zone. Distance units in U.S. Survey Feet.

Vertical Datum:  
Soundings are shown in feet and indicate depths below Low Water Reference Plane 2007 (NGVD).  
Distances on the Mississippi River, above and below Head of Passes are shown at 1 mile intervals.

The location of navigation aids are based on and provided by the U.S. Coast Guard and USACE crew.  
2015 Aerial Photography data source: NAIP, USDA-FSA-APFO Aerial Photography Field Office.

Reference is N.O.A. Navigation Chart No. 11370.

\*\* Shoalest Sounding per Quarter per Reach.

\*\*\* High frequency (200 kHz) survey data represents the first signal return at a sounding location and will include suspended solids, known as "fluff", if present. Low frequency (20 kHz) survey data normally penetrates through this "fluff" layer to depict elevations of consolidated bottom material. Low frequency accuracies may vary depending on channel conditions and fathometer settings.

LWRP: 1.1  
Gage Reading: R:13.22 NO:9.33 USED:10.70 NGVD  
Sea Conditions: CALM  
Vessel Name: OB-167  
Survey Type: CONDITION  
Sounding Frequency\*\*\*: HIGH

0 500 1,000 1,500 2,000 2,500 Feet

**MISSISSIPPI RIVER - B.R. TO GULF  
FAIRVIEW CROSSING  
MD\_48\_FRV\_20181004\_CS  
04 October 2018**

**Sheet  
Reference  
Number  
48 of 97**

Revision Number:  
3.13-20160811